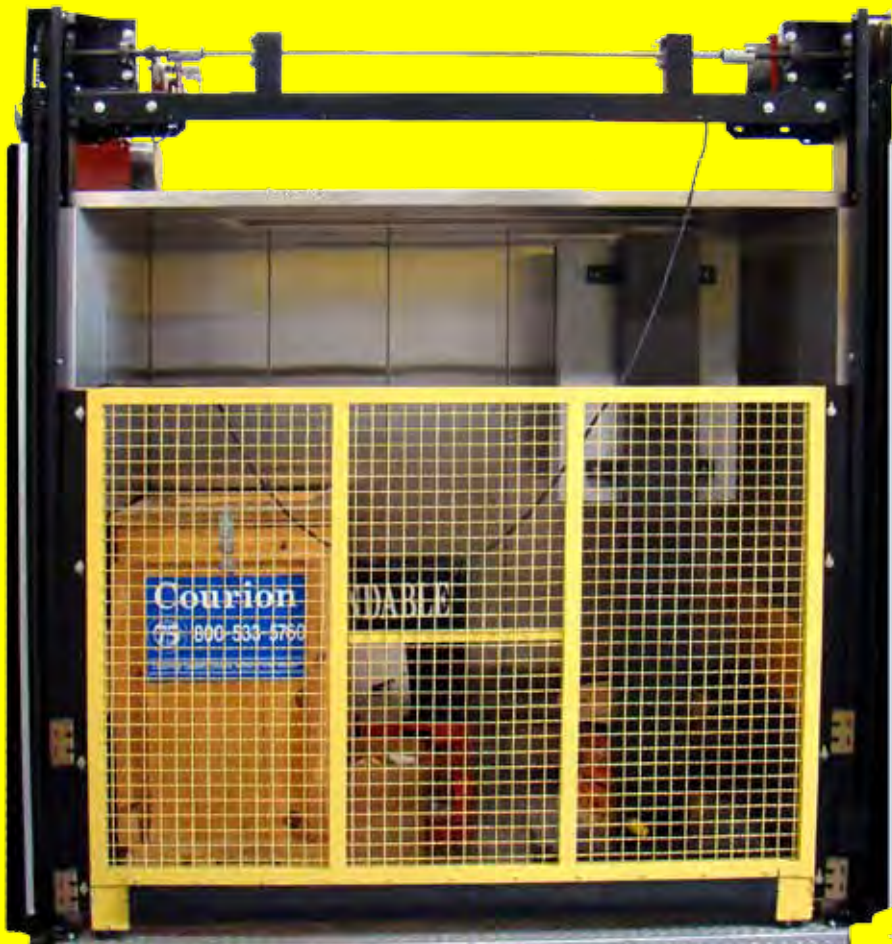


CAR GATE EQUIPMENT

PANELS - GUIDES - CHAINS - DRIVE UNITS - CONTACTS



ONE COMPANY
So Many Options



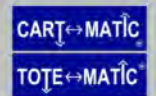
Freight Door Systems



Freight Car Enclosures



IUEC Installation



Material Handling
Systems



Service Parts



Service Parts



Service Parts

ENERGY.

Service Parts



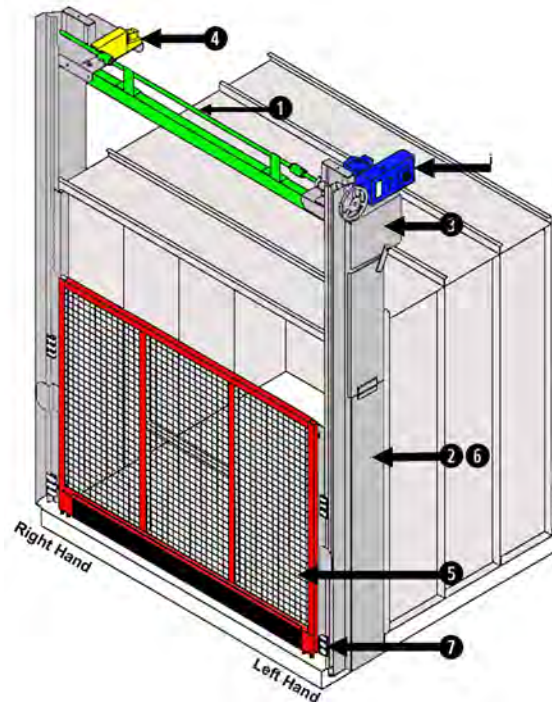
Table of Contents



Car Gate Equipment

Car Gate Equipment Layouts

Q Series	3
P Series	4
Controls - Gate iDRIVE VFD Control	5
Gate Panels	10
2-Section Gate Panel Sheave	11
Reversing Edge	12
Web Straps ..	17
Gate Guide Rails	18
Q Series Layout	19
P Series Layout	20
Gate Guide Rail Parts	21
Counterweight Rod	23
Counterweights	27
Gate Guide Shoes	29
Gate Chains and Chain Rods	
Gate Chains	32
Chain Links	33
Chain Rods	34
Gate Drive Units and Motors	
Gate Drive Units	35
Gate Motors	45
Cross Drives	46
Sprocket and Bearing Units	50
Gate Contacts	54
Gate Limit Switches	
Next Generation Encoders	61
Geared Limit Switches	68
Rotary Limit Switches	71



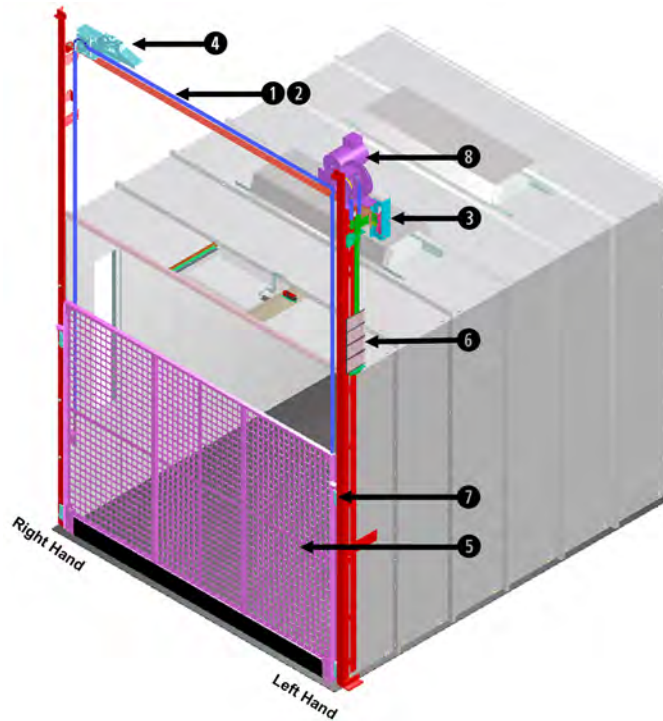
General Description

COURION Power or Manually Operated Car Gate with Q Series Gate Guides and Drive Unit

COURION Q Series Car Gates can be retrofitted for COURION's Next Generation iSYSTEM equipment that includes the iLEARN VFD Car Top Control (See CONTROLS Section of this Manual) and iSENSOR Encoder.

Parts Manual Sections

- 1 Cross Drive and Sprocket Units
- 2 Chains and Chain Rods
- 3 Gate Limit Switches
- 4 Gate Panels
- 5 Gate Guide Rails & Counterweights
- 6 Guide Shoes
- 7 Gate Drive Units and Motors



General Description

COURION Power or Manually Operated Car Gate with P Style Gate Guides and Operators.

COURION P Style Car Gates can be retrofitted for COURION's Next Generation iSYSTEM equipment that includes a iLEARN VFD Car Top Control (See CONTROLS Section of this Manual) and iSENSOR Encoder.

Parts Manual Sections

- 1 Cross Drive and Sprocket Units
- 2 Chains and Chain Rods
- 3 Gate Limit Switches
- 4 Gate Panels
- 5 Gate Guide Rails & Counterweights
- 6 Guide Shoes
- 7 Gate Drive Units and Motors



Controls

01-725000

Gate iDRIVE.g

Where Used

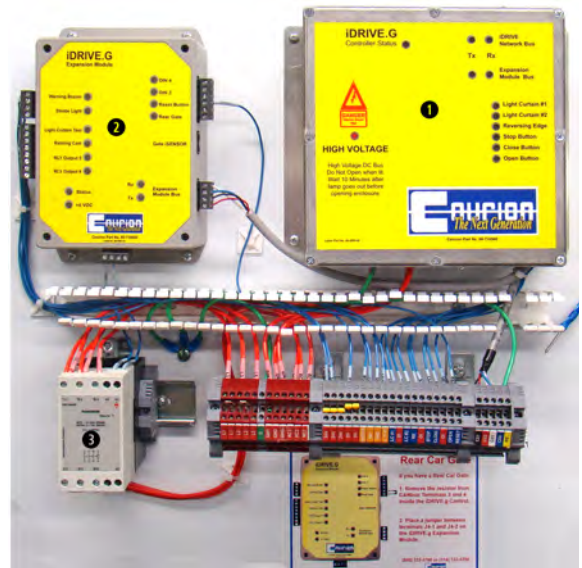
COURION Next Generation Freight Doors with Gate iSENSOR.g Encoder.

Requires Next Generation systems running iLEARN version 2.0 and iDRIVE version 2.03 software.

Sub Assemblies

(For additional details - see pages that follow)

Item #	Part #	Part Description
1	90-710500	Gate iDRIVE.g VFD Control
2	90-710600	Gate iDRIVE.g Expansion Module
3	90-713504	Contactor - Solid State



Handed
☐ Yes ☒ No If part is handed, you must specify Right or Left Hand.

Features and Notes

The Gate iDRIVE.g VFD Control provides car-top variable frequency drive control to COURION's gate motors. The variable frequency technology utilized by the Gate iDRIVE.g guarantees the smooth and quiet operation of your car gate every time.

Started in May 2010. Replaces the Gate iDRIVE.plc

Used in conjunction with the Gate iSENSOR.g

iSYSTEM VFD Controls

90-710500

Gate iDRIVE.g VFD Control

Where Used

COURION Gate iDRIVE.g

Features and Notes



Handed ☐ Yes ☒ No

90-710600

Gate iDRIVE.g Expansion Module

Where Used

COURION Gate iDRIVE.g

Features and Notes



Handed ☐ Yes ☒ No

90-713504

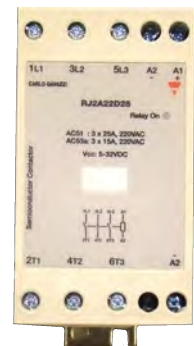
Contactor - Solid State

Where Used

COURION Gate iDRIVE.g and Gate iDRIVE.plc Controls

Features and Notes

Zero Crossover



Handed ☐ Yes ☒ No



Controls

01-720000

Gate iDRIVE.plc

Where Used

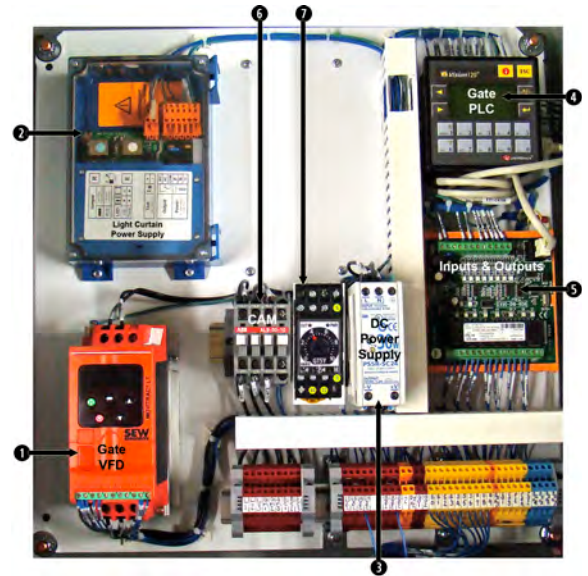
COURION Next Generation iSYSTEM with Gate iSENSOR.plc Encoder.

Requires Next Generation systems running iLEARN version 1.14 and iDRIVE version 1.04 software.

Sub Assemblies

(For additional details - see pages that follow)

Item #	Part #	Part Description
1	90-210205	Variable Frequency Drive
2	90-514501	CARE-C Power Supply
3	90-540001	Fuse - 1A
4	90-710510	Power Supply
5	90-711000	Vision 120 PLC
6	90-711500	Digital Input/Output Card
7	90-713504	Contactator - Solid State
8	90-713505	Time Delay Relay
9	90-837400	Fuse Terminal Block
10	e-1223	Relay Socket



Handed
☒ Yes ☐ No If part is handed, you must specify Right or Left Hand.

Features and Notes

Replaced in May 2010 with the COURION Gate iDRIVE.g

If the Gate iDRIVE.plc is replaced with a Gate iDRIVE.g, then the Gate iSENSOR.plc must be replaced with a Gate iSENSOR.g.

Must specify FRONT or REAR Gate when ordering.

iSYSTEM VFD Controls

90-210205 Variable Frequency Drive

Features and Notes

COURION Gate iDRIVE.plc



Handed ☐ Yes ☒ No

90-514501 CARE-C Power Supply

Features and Notes

COURION CARE-C Light Curtain



COURION's CARE C Light Curtain is a non-contact light curtain with 32 infrared light beams that fill the hoistway opening from the floor to a height of 6' (1.80m).

Handed ☐ Yes ☒ No

90-540001 Fuse - 1A

Features and Notes

COURION iLEARN Door Controller and Gate iDRIVE.plc



Handed ☐ Yes ☒ No

90-710510 Power Supply

Features and Notes

COURION Gate iDRIVE.plc



24V

Handed ☐ Yes ☒ No

90-711000 Vision 120 PLC

Features and Notes

COURION Gate iDRIVE.plc



12/24VDC with RS232/485

Handed ☐ Yes ☒ No

90-711500 Digital Input/Output Card

Features and Notes

COURION Gate iDRIVE.plc



Used in connection with the Vision 120 PLC (Part #90-711000)

Handed ☐ Yes ☒ No

iSYSTEM VFD Controls

90-713504

Contactor - Solid State

Features and Notes

COURION Gate iDRIVE.g and Gate iDRIVE.plc Controls



Zero Crossover

Handed ☐ Yes ☒ No

90-713505

Time Delay Relay

Features and Notes

COURION GATE iDRIVE.plc



Used to delay start of Gate iDRIVE PLC until hoistway communications are established by the iLEARN Door Control.

Handed ☐ Yes ☒ No

90-837400

Fuse Terminal Block

Features and Notes

COURION Traction Elevator Lift Control



30 amps 600V

Handed ☐ Yes ☒ No

90-893800

Buzzer - 24VDC

Features and Notes

COURION Next Generation System with Gate iDRIVE.G or Gate iDRIVE.plc



Handed ☐ Yes ☒ No

e-1223

Relay Socket

Features and Notes

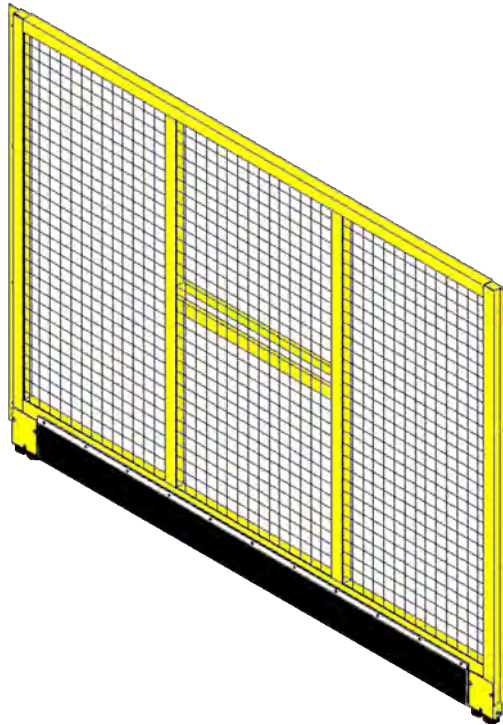
COURION "PLC" Door Controls and Gate iDRIVE.plc Gate Control



Handed ☐ Yes ☒ No



Gate Panels



General Description

Fork-Lift Ran Into Your Car Gate?

Call COURION Today at (800) 533-5760.

All we need is the JOB NUMBER, JOB NAME, or JOB LOCATION to process your order.

Available Car Gate Panels for Courion, Security Fire Door, Harris Preble, and Guilbert Freight Elevator Door Systems. Available Car Gate Construction: Wire Mesh or Solid Panel construction. 6' Tall or Full-Height. Available Car Gate Finishes: Factory Prime, Air Dry Enamel (color required), Powder Coat (color required), and all stainless construction.

All COURION Car Gate Panels come with a COURION Reversing Edge. Other non-contact reversing devices are available from COURION. Please see "Door Protection" Section of this Manual.

Parts Manual Sections

- 1 2-Section Sheave
- 2 Gate Reversing Edge
- 3 Web Straps

2-Section Sheaves

10-199600 Gate Sheave Assembly - 3"

Where Used

COURION 2-Section and Ratio Car Gate Panels

Features and Notes



Handed ☐ Yes ☒ No

10-199900 Gate Sheave Assembly - 4"

Where Used

COURION 2-Section and Ratio Car Gate Panel

Features and Notes

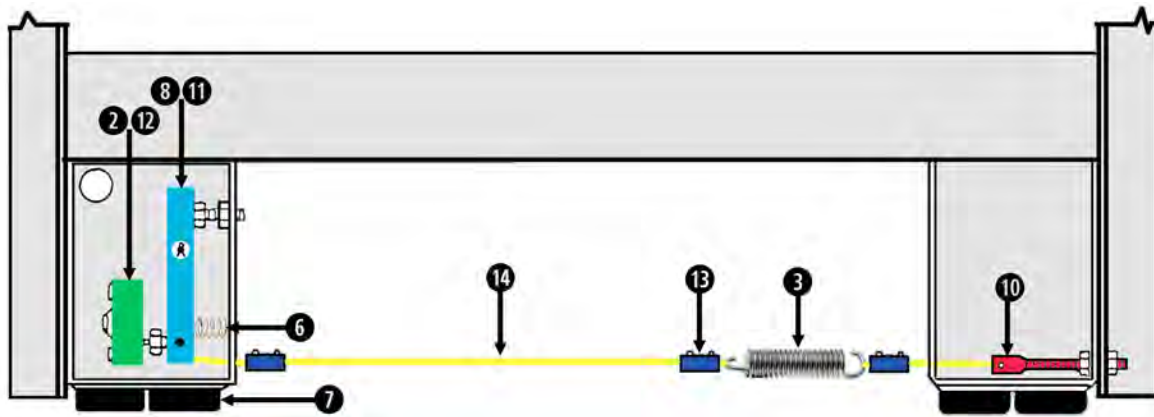


Handed ☐ Yes ☒ No



Car Gate Equipment

Gate Reversing Edge



Sub Assemblies

(For additional details - see pages that follow)

Item #	Part #	Part Description
1	07-600200	Contact Case Cover
2	07-600700	Insulator
3	07-689701	Trip Wire Spring
4	07-700025	SJO Cord Assembly (25')
5	07-990001	Swivel Reel Assembly
6	08-500300	Contact Lever Spring
7	09-102200	Rubber Bumper
8	11-204801	Contact Lever
9	20-006011	Neoprene
10	90-000500	Dead End Eye Bolt
11	90-807700	Nylon Bushing
12	90-875300	Reversing Edge Micro Switch
13	90-878500	Wire Clamp
14	90-887900	Trip Wire

Handed
☐ Yes ☒ No

If part is handed, you must specify Right or Left Hand.

Where Used

COURION Power Operated Car Gates.

Also Available - Gate Reversing Edges for Hazardous Locations.

Features and Notes

Gate Reversing Edges are manufactured to the specific length of your Car Gate.

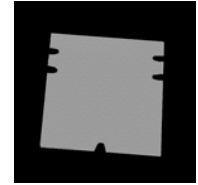
Please have your JOB NUMBER, JOB NAME, or JOB LOCATION when you call to order from COURION.

Gate Reversing Edge

07-600200 Contact Case Cover

Features and Notes

COURION Car Gate Reversing Edge Leading Edge Dead-End Switch Housing (#07-689801) and Leading Edge Live-End Switch Housing (#07-689901)

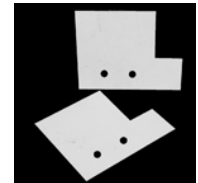


Handed ☐ Yes ☒ No

07-600700 Insulator

Features and Notes

COURION Car Gate Reversing Edge



Handed ☐ Yes ☒ No

07-689701 Trip Wire Spring

Features and Notes

COURION Car Gate Reversing Edge



Handed ☐ Yes ☒ No

07-689801 Leading Edge Dead-End Switch

Features and Notes

COURION Car Gate Reversing Edge. Includes Reversing Edge Housing (#07-600101), Cover (07-600200), Rubber Bumpers (#09-102200), and Dead End Eye Bolt (#90-000500).

Available in Stainless (Part #: 07-689801S)



Handed ☐ Yes ☒ No

07-689901 Leading Edge Live-End Switch

Features and Notes

COURION Car Gate Reversing Edge. Includes Reversing Edge Housing (#07-600102), Cover (07-600200), Rubber Bumpers (#09-102200), Insulator (#07-600700), Contact Lever Spring (#08-500300), Contact Lever (#11-204801), Nylon Bushings (#90-807700), and Reversing Edge Micro Switch (#90-875300).



Handed ☐ Yes ☒ No

07-700025 SJO Cord Assembly - 3 Wire (25')

Features and Notes

COURION Car Gate Reversing Edge with microswitch. If you have a Tape Switch Reversing Edge, you may need SJO Cord Assembly - 4 Wire (Part #90-815000).

This cable consists of three (3) 18GA Insulated wires



Handed ☐ Yes ☒ No

Gate Reversing Edge

07-990001 Swivel Reel Assembly

Features and Notes

COURION Car Gate Reversing Edge with long travel and SJO Cord.



Handed ☐ Yes ☒ No

08-500300 Contact Lever Spring

Features and Notes

COURION "X" Series Interlocks and Car Gate Reversing Edge

Include (2) 1/4" Flat Washers and (1) 3/32 x 1/2 Cotter Pin

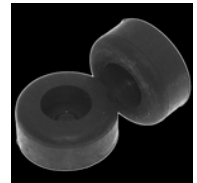


Handed ☐ Yes ☒ No

09-102200 Rubber Bumper

Features and Notes

COURION D Style Door Panels with Latch Bars, and Car Gate Reversing Edge



Handed ☐ Yes ☒ No

11-204801 Contact Lever

Features and Notes

COURION Car Gate Reversing Edge.

Include (2) Nylon Bushings (#90-807700), (1) #10-24 x 1/2 Socket Head Set Screw, (2) 1/4" Flat Washers and (1) 3/32 x 1/2 Cotter Pin



Handed ☐ Yes ☒ No

20-006011 Neoprene

Features and Notes

COURION Car Gate Reversing Edge.

Neoprene is Cut to Length. Please have you JOB NUMBER, JOB NAME, or JOB LOCATION when you call to order from COURION..



Handed ☐ Yes ☒ No

90-000500 Dead End Eye Bolt

Features and Notes

COURION Car Gate Reversing Edge and Freight Door Latch Bar.

Measures 1/4'-20 X 2-3/16"



Handed ☐ Yes ☒ No

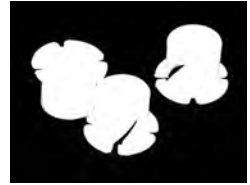
Gate Reversing Edge

90-807700

Nylon Bushing

Features and Notes

COURION Car Gate Reversing Edge



Handed ☐ Yes ☒ No

90-815000

SJO Cable - 4 Wire

Features and Notes

COURION Car Gates with Tape Switch Reversing Edges

Handed ☐ Yes ☒ No

90-854700

Latex Rubber Tubing

Features and Notes

COURION Car Gate Reversing Edge - Hazardous Conditions



Handed ☐ Yes ☒ No

90-854900

Rubber Hose

Features and Notes

COURION Car Gate Reversing Edge - Hazardous Conditions



Handed ☐ Yes ☒ No

90-875300

Reversing Edge Micro Switch

Features and Notes

COURION Car Gate Reversing Edge



Handed ☐ Yes ☒ No

90-878500

Wire Clamp

Features and Notes

COURION Car Gate Reversing Edge



Handed ☐ Yes ☒ No

Gate Reversing Edge

90-887900 Trip Wire

Features and Notes

COURION Car Gate Reversing Edge. T

rip Wire is Cut to Length. Please have the JOB NUMBER, JOB NAME, or JOB LOCATION when you call to order from COURION..



Handed ☐ Yes ☒ No

90-960100 Nipple

Features and Notes

COURION Car Gate Pneumatic Reversing Edge - Hazardous Locations



Handed ☐ Yes ☒ No

90-982600 Reversing Edge Micro Switch - Hazardous Locations

Features and Notes

COURION Car Gate Pneumatic Reversing Edge - Hazardous Locations.

Must be ordered as Normally Open (#90-982600) or Normally Closed (#90-982602)



Handed ☐ Yes ☒ No

90-990001 Retractable Reel

Features and Notes

COURION Swivel Reel Assembly.

Include (3) 1/4-20 x 5/8" Round Head Machine Screws, (3) 1/4 Flat Washers, (3) 1/4 Split Lock Washers, and (3) 1/4-20 Hex Nuts



Handed ☐ Yes ☒ No

Web Straps

09-800332 Web Strap (32" Long)

Where Used

COURION Freight Doors and Car Gates

Maximum Opening Height = 8'-1"

Features and Notes

Includes necessary mounting hardware.



Handed ☐ Yes ☒ No

09-800356 Web Strap (56" Long)

Where Used

COURION Freight Doors and Car Gates

Maximum Opening Height = 10'-1"

Features and Notes

Includes necessary mounting hardware.



Handed ☐ Yes ☒ No

09-800374 Web Strap (74" Long)

Where Used

COURION Freight Doors and Car Gates

Maximum Opening Height = 11'7"

Features and Notes

Includes necessary mounting hardware.



Handed ☐ Yes ☒ No

09-801100 Lift Up Plate

Where Used

COURION Freight Doors and Car Gates

Features and Notes

Handed ☐ Yes ☒ No



Gate Guide Rails & Counterweights



General Description

Parts Manual Sections

Bent Gate Guide Rail? Call Courion Today!

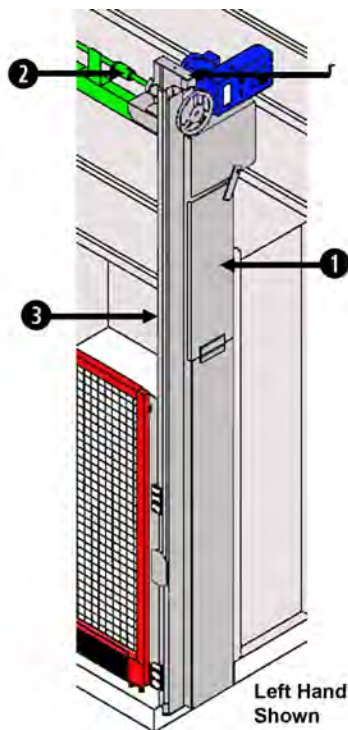
COURION manufactures two (2) basic styles of Gate Guide Rails. Please see the next few pages for a complete description of both types.

Q Style Gate Guide Rails Shown

The type and length of your Gate Guide Rails is job specific. Please call Courion with your JOB NUMBER, JOB NAME or JOB LOCATION to order Guide Rails.



Gate Guide Rails - Q Style



General Description

The Length of COURION's Q Gate Columns are Job Specific. Please call COURION with your JOB NUMBER, JOB NAME, or JOB LOCATION to order new Q Gate Columns.

COURION Q Gate Columns are factory assembled. The Q Style Gate Column includes weights, chains, gate guides, and mounting brackets in one simple-to-install unit.

The type and length of your Gate Guide Rails is job specific. Please call Courion with your JOB NUMBER, JOB NAME or JOB LOCATION to order Guide Rails.

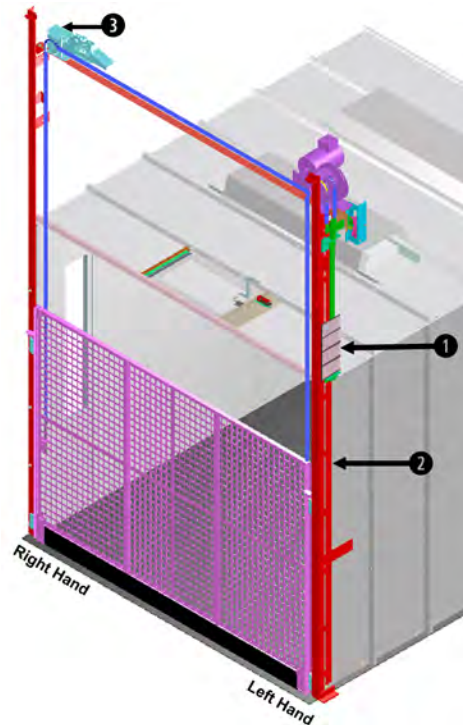
Include Mounting Hardware Kit #94-000701Q09 for Guide Rail Columns up to 9'-0" tall and #94-000701Q12 for Guide Rail Columns up to 12'-0" tall.

Parts Manual Sections

- 1 Counterweights
- 2 Cross Drive and Sprocket Units
- 3 Guide Rails
- 4 Gate Sprockets and Bearing Units



Gate Guide Rails - P Style



General Description

The Length of COURION's P Gate Guides are Job Specific. Please call COURION with you JOB NUMBER, JOB NAME, or JOB LOCATION to order new P Style Gate Guides.

Parts Manual Sections

- 1 Counterweights
- 2 Gate Guide Rails & Counterweights
- 3 Gate Sprockets and Bearing Units

Include Hardware Kit #94-000070

Guides

07-101700 Wainscot Floor Angle - Single Section Gate

Features and Notes

COURION P Style Single Section Power Car Gates

Include Hardware Kit #94-000100

-- -- --



Handed ☒ Yes ☐ No

07-101701 Wainscot Floor Angle - 2 Section Gate

Features and Notes

COURION P Style 2-Section Power Car Gates

Include Hardware Kit #94-000100

-- -- --



Handed ☒ Yes ☐ No

21-706000 Bumper Angle Assembly

Features and Notes

COURION Q Style Gate Guides

Available in stainless (Part #:21-706000S)



Handed ☐ Yes ☒ No

21-707500 Blocking Spacer

Features and Notes

COURION Q Style Gate Guides



Handed ☐ Yes ☒ No

21-707700 Blocking Wedge

Features and Notes

COURION Q Style Gate Guides



Handed ☐ Yes ☒ No

21-708022 Idler Assembly - Slow Gate Panel

Features and Notes

COURION Q Style 2-Section Car Gate



Handed ☐ Yes ☒ No

Guides

94-000070 Gate Guide Hardware Kit

Features and Notes

COURION P Style Gate Guides

GATE GUIDE HARDWARE KIT Courion Part #: 94-000070	
(18) 5/16-18 x 1-3/4 Hex Head Mach Screw – FULL THREAD	
(18) 5/16 Split Lock Washer	
(54) 5/16 Flat Washer	
(54) 5/16-18 Hex Nut	
COURION 1-800-533-5760 OR 1-314-533-5700	

Handed ☐ Yes ☒ No

94-000100 Wainscot Floor Angle Hardware Kit

Features and Notes

COURION P Style Gate Guides

WAINSCOT FLOOR ANGLE HARDWARE KIT Courion Part #: 94-000100	
(5) 3/8-16 x 1 Hex Head Cap Screw (HHCS)	
(5) 3/8 x 1/2 Flat Head Machine Screw (FHMS)	
(8) 3/8 Lock Washer (LW)	
(8) 3/8-16 Hex nut	
(8) 3/8 Flat Washer (FW)	
COURION 1-800-533-5760 OR 314-533-5700	

Handed ☐ Yes ☒ No

94-000701Q09 Gate Column (9') Hardware Kit

Features and Notes

COURION Q Style Car Gates (9' and under)

GATE COLUMN (9') HARDWARE KIT 94-000701Q09	
(15) 5/16-18 x 1-1/4 Hex Head Cap Screws (HHCS)	
(15) 5/16 SAE Washers	
(15) 5/16 Spring Lock Washers (LW)	
COURION 1-800-533-5760 OR 314-533-5700	

Handed ☐ Yes ☒ No

94-000701Q12 Gate Column (12') Hardware Kit

Features and Notes

COURION Q Style Car Gates (12' and under)

GATE COLUMN (12') HARDWARE KIT 94-000701Q12	
(18) 5/16-18 x 1-1/4 Hex Head Cap Screw (HHCS)	
(18) 5/16 SAE Washers	
(18) 5/16 Spring Lock Washers (LW)	
COURION 1-800-533-5760 OR 314-533-5700	

Handed ☐ Yes ☒ No



Car Gate Equipment

07-199748

Car Gate Weight Rod

Where Used

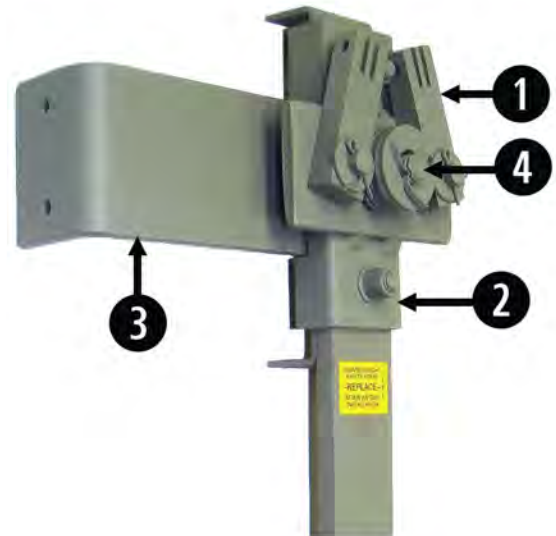
COURION P Style Car Gates.

The Chain Connector Assembly (#07-105023) and Gate Contact Cam Assembly (#07-105024) replace the following obsolete items: Equalizer Bar (#07-105000), Safety Strap (#07-105150), and Gate Contact Cam Assembly (#07-108805). You must order both parts when replacing any of the obsolete items.

Sub Assemblies

(For additional details - see pages that follow)

Item #	Part #	Part Description
1	07-104900	Cable Chain Pin
2	07-105023	Chain Connector Assembly
3	07-105024	Gate Contact Cam Assembly
4	07-105101	Equalizer Bar Bolt



Handed
☐ Yes ☒ No If part is handed, you must specify Right or Left Hand.

Features and Notes

The length of Car Gate Weight Rod can vary depending on your Job. Please have your JOB NUMBER, JOB NAME, or JOB LOCATION when ordering.

Counterweight Parts

07-103101 Gate Weight Shoe

Features and Notes

COURION P Style Car Gate Weight Rods



Handed ☐ Yes ☒ No

07-104900 Cable Chain Pin

Features and Notes

COURION P Style Car Gate Weight Rod

Measures 3/4" x 2-11/16"

Include (1) 3/8" Flat Washer, and (1) 3/32 x 3/4" Cotter Pin



Handed ☐ Yes ☒ No

07-105000 Equalizer Bar - Obsolete

Features and Notes

COURION P Style Car Gate Weight Rod

Replace with Chain Connector Assembly 07-105023 and Gate Gate Contact Cam Assembly 07-105024



Handed ☐ Yes ☒ No

07-105023 Chain Connector Assembly

Features and Notes

COURION P Style Car Gate Weight Rod

Replaces Equalizer Bar 07-105000 and Safety Strap 07-105150

Include (2) 3/8" Flat Washers, (2) 3/32 x 3/4" Cotter Pins.



Handed ☐ Yes ☒ No

07-105024 Gate Contact Cam Assembly

Features and Notes

COURION P Style Car Gate Weight Rod

Replaces Gate Contact Cam Assembly 07-108805

Include (2) 5/16-18 x 1-1/8" Hex Bolts, and (2) 5/16" Spring Lock Washers



Handed ☐ Yes ☒ No

07-105101 Equalizer Bar Bolt

Features and Notes

COURION P Style Car Gate Weight Rod with Chain Connector Assembly #07-105023, and Gate Contact Cam Assembly 07-105024.

Measures 1/2" x 1-1/2" Grade 8 Bolt



Handed ☐ Yes ☒ No

Counterweight Parts

07-105102 Equalizer Bar Bolt

Features and Notes

COURION P Style Car Gate Weight Rod with Equalizer Bar #07-105000, Gate Contact Cam #07-108805, and Safety Strap #07-105150.

Measures 1/2" x 1-3/4" Grade 8 Bolt.

Include (1) 1/8 x 3/4 Cotter Pin and (1) 1/2" Spring Lock Washer



Handed ☐ Yes ☒ No

07-105150 Safety Strap - Obsolete

Features and Notes

COURION P Style Car Gate Weight Rod

Replace with Chain Connector Assembly 07-105023 and Gate Gate Contact Cam Assembly 07-105024



Handed ☐ Yes ☒ No

07-105300 Bushing

Features and Notes

COURION P Style Car Gate Weight Rod

Measures: 5/8" x 9/32"



Handed ☐ Yes ☒ No

07-108805 Gate Contact Cam Assembly - Obsolete

Features and Notes

COURION P Style Car Gate Weight Rod

Replace with Chain Connector Assembly 07-105023 and Gate Gate Contact Cam Assembly 07-105024



Handed ☐ Yes ☒ No

21-773500 Weight Rod

Features and Notes

COURION Q Style Gate Column Weight Stack



Handed ☐ Yes ☒ No

21-774000 Weight Pick-Up Assembly

Features and Notes

COURION Q Style Gate Column Weight Stack



Handed ☐ Yes ☒ No

Counterweight Parts

94-000310

Gate Counterweight Hardware Kit

Features and Notes

COURION P Style Car Gate Counterweights.

One (1) hardware kit required per four (4) weights.

Includes (4) 4-1/8" x 1-5/8" leather shims, (4) 4" x 1-1/2" Bottom Plates, (9) 1/4-20 x 1/2" Round Head Machine Screws, flat washers, and lock washers.



Handed ☐ Yes ☒ No

Counterweights

21-771000 Weight Bearing

Where Used

COURION Q Style Gate Column Weight Stack



Features and Notes

Handed ☐ Yes ☒ No

21-771500 CAM Weight - 16.8 lbs.

Where Used

COURION Q Style Car Gate Counterweight



Features and Notes

2-3/4" x 8-1/4" x 2-1/2" CAM weight

Handed ☐ Yes ☒ No

21-772000 Weight - 14.2 lbs.

Where Used

COURION Q Style Gate Guide Counterweights



Features and Notes

2-3/4" x 8-1/4" x 2-1/2"

Handed ☐ Yes ☒ No

21-772800 Weight - 4.4 lbs.

Where Used

COURION Q Style Gate Guide Counterweights



Features and Notes

2-3/4" x 8-1/4" x 3/4"

Handed ☐ Yes ☒ No

Counterweights

21-773000

Weight - 1.4 lbs.

Where Used

COURION Q Style Gate Guide Counterweights



Features and Notes

2-3/4" x 8-1/4" x 1/4"

Handed ☐ Yes ☒ No

90-847601

Weight - 22.4 lbs.

Where Used

Counterweight for COURION "P" Style Car Gates



Features and Notes

2" x 10 x 3" lead weight

Handed ☐ Yes ☒ No

90-939500

Weight - 15.6 lbs.

Where Used

COURION Counterweights for "P" Style Car Gates



Features and Notes

2" x 10 x 3 cast weight (Marked W-210-3)

Handed ☐ Yes ☒ No

90-940400

Weight - 2.4 lbs.

Where Used

Counterweight for COURION "P" Style Car Gates



Features and Notes

2" x 10" x 1/2" cast weight (Marked W-210-5)

Handed ☐ Yes ☒ No



Guide Shoes

Guide Shoes

Where Used

NEED A NEW PAIR OF SHOES?

COURION maintains a wide variety of Adjustable Guide Shoes, including the LF96 Guide Shoe with a low-friction bearing, self-lubricating surface.

Call Courion today to order a new set of Shoes. All you need is the

Features and Notes

The LF96 Door Shoe can be retrofitted to most hoistway doors and car gates.

The LF96 Guide Shoe is ambidextrous.



Handed ☒ Yes ☐ No

If part is handed, you must specify Right or Left Hand.

Part #	Part Description	Where Used
09-829201	Guide Shoe Assembly - #292	Generally used on heavy duty COURION Freight Doors and Car Gates. Includes one (1) Guide Shoe per pack
09-829233	Guide Shoe Assembly Pack - #292	Generally used on heavy duty COURION Freight Doors and Car Gates. Includes two (2) Left Hand and 2 Right Hand Guide Shoes per pack.
09-829501	Guide Shoe Assembly - #295	COURION Freight Doors that currently have #295 Guide Shoes. Includes one (1) Guide Shoe per pack.
09-829601	Guide Shoe Assembly - #296	COURION Freight Doors and Car Gates that currently have #296 Guide Shoes. Includes one (1) Guide Shoe per pack.
09-829633	Guide Shoe Assembly Pack - #296	COURION Freight Doors and Car Gates that currently have #296 Guide Shoes. Includes two (2) Right Hand and two (2) Left Hand Guide Shoes per pack.
09-870000	Guide Shoe Assembly - LF96	COURION Freight Elevator Doors and Car Gates. Includes one (1) Guide Shoe per pack.
09-870033	Guide Shoe Assembly Pack - LF96	COURION Freight Elevator Doors and Car Gates. Includes four (4) Guide Shoes per pack.

Guide Shoes

09-801200 Galvanized Shoe Washer

Features and Notes



Handed ☐ Yes ☒ No

09-801300 Gray PVC Shoe Washer

Features and Notes



Handed ☐ Yes ☒ No

09-801301 Gray PVC Shoe Washer

Features and Notes



Handed ☐ Yes ☒ No

09-829201 Guide Shoe Assembly - #292

Features and Notes

Available in bronze (Part #:09-829201B)

Measures: 1-15/16" x 3-1/16". Hole mounting spacing = 1-9/16". Uses 5/16-24 x 7/8" Hex Head Screws for mounting.



Handed ☒ Yes ☐ No

09-829233 Guide Shoe Assembly Pack - #292

Features and Notes

Available in bronze (Part #: 09-829233B)

Measures: 1-15/16" x 3-1/16". Hole mounting spacing = 1-9/16". Uses 5/16-24 x 7/8" Hex Head Screws for mounting.



Handed ☐ Yes ☒ No

09-829501 Guide Shoe Assembly - #295

Features and Notes

Available in bronze (Part #: 09-829501B)



Handed ☒ Yes ☐ No

Guide Shoes

09-829601 Guide Shoe Assembly - #296

Features and Notes

Available in bronze (Part #: 09-829601B)

Measures: 2-3/16" x 3-1/16". Hole mounting spacing = 1-9/16". Uses 5/16-24 x 7/8" Hex Head Screws for mounting.



Handed ☒ Yes ☐ No

09-829633 Guide Shoe Assembly Pack - #296

Features and Notes

Available in bronze (Part #09-829633)

Measures: 2-3/16" x 3-1/16". Hole mounting spacing = 1-9/16". Uses 5/16-24 x 7/8" Hex Head Screws for mounting.



Handed ☐ Yes ☒ No

09-870000 Guide Shoe Assembly - LF96

Features and Notes

The LF96 Door Shoe can be retrofitted to most hoistway doors and car gates that use #292 or #296 Guide Shoes.

The LF96 Guide Shoe is ambidextrous.



Handed ☐ Yes ☒ No

09-870033 Guide Shoe Assembly Pack - LF96

Features and Notes

The LF96 Door Shoe can be retrofitted to most hoistway doors and car gates.

The LF96 Guide Shoe is ambidextrous.



Handed ☐ Yes ☒ No

22-257000 Dumbwaiter Door Shoe Assembly

Features and Notes

See 94-000818 Door Shoe Hardware Kit



Handed ☐ Yes ☒ No



Chains & Chain Rods

Chains

Where Used

The length of your chain depends upon your hoistway opening height. To insure that you receive the correct door chain length, please call Courion before ordering. You will need your COURION JOB NUMBER, JOB NAME, or JOB LOCATION to process your order.

Features and Notes

Available in carbon steel or stainless.



Handed ☐ Yes ☒ No

If part is handed, you must specify Right or Left Hand.

Part #	Part Description	Where Used
07-106200	Compensating Chain Assembly	COURION P Style Car Gates
90-818800	Chain - #6 Cable Leaf	COURION Freight Doors and P Style Car Gates
90-818900	Chain - #6H5 Cable (Obsolete)	Obsolete - Use Chain #90-818800.
90-819200	Chain - AL 442 Cable	COURION Retiring Cams, and Compound Car Gates
90-819500	Chain - #35 Roller	COURION Dumbwaiter Doors, Gates, & Retiring Cams
90-819600	Chain - #40 Roller	COURION Car Gates
90-819700	Chain - #41 Roller	COURION Rotary Sprocket Limit Switch
90-819800	Chain - #50 Roller	HARRIS PREBLE Freight Doors
90-820200	Chain - #8 Sash	COURION Emergency Unlocking Device
90-894800	Chain - #35 Roller - Rustless	COURION Dumbwaiter Doors
combochain	Gate Combination Chain (#6 and #40)	COURION P Style Car Gates



Chains & Chain Rods

Chain Links

Where Used

COURION Chains and Chain Rods

Features and Notes



Handed ☐ Yes ☒ No

If part is handed, you must specify Right or Left Hand.

Part #	Part Description	Where Used
07-104900	Cable Chain Pin	COURION P Style Car Gate Weight Rod
07-105203	Cable Chain Pin - 1-1/8 Long	COURION P Style Freight Doors and Car Gates
07-105204	Cable Chain Pin	COURION P Style Freight Doors and Car Gates
07-105250	Connection Pin - 1" Long	COURION Q Style Freight Doors
09-400202	Cable Chain Pin - #6 Chain	COURION Slide-Up Freight Doors
90-820400	Connecting Link - #35 Offset	COURION #35 Chain
90-820500	Connecting Link - #35 Straight	COURION #35 Chain
90-820600	Connecting Link - #40 Offset	COURION #40 Chain
90-820700	Connecting Link - #40 Straight	COURION #40 Chain
90-820800	Connecting Link - #41 Offset	COURION AL-422 Chain and #41 Chain
90-820900	Connecting Link - Straight #41	COURION AL-422 Chain and #41 Chain
90-821000	Connecting Link - #50 Offset	COURION #50 Chain
90-821100	Connecting Link - #50 Straight	COURION #50 Chain
90-894900	Connecting Link - #35 Offset (Stainless)	COURION #35 Stainless Chain

Chain Rods

07-199600 Chain Bolt

Where Used

COURION P Style Car Gate

Include Hardware Kit #07-199611

Features and Notes

5/8" x 10"

Available in Stainless



Handed ☐ Yes ☒ No

07-199611 Chain & Chain Rod Hardware Kit

Where Used

COURION "P" Series Car Gates

Features and Notes

Available in stainless.

Contains 07-105203 & 07-105204 Cable Chain Pin (1-1/8" & 1")



Handed ☐ Yes ☒ No



Car Gate Equipment

21-750000

Q Gate Drive Unit - 32 oz motor

Where Used

COURION Q Style Car Gates

Sub Assemblies

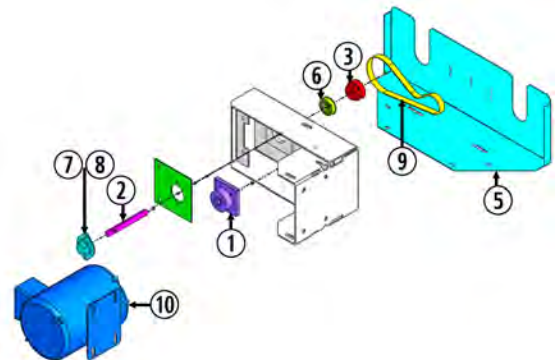
(For additional details - see pages that follow)

Item #	Part #	Part Description
1	21-753000	Idler Belt
2	21-754000	Back Shaft
3	21-755000	Timing Belt Pulley
4	21-755300	Timing Belt Pulley
5	21-756500	Drive Cover
6	90-805700	Ball Bearing
7	90-805751	Bearing
8	90-805752	Flange
9	90-809000	Timing Belt
10	90-853300	Motor - 32 oz.
11	90-871100	Sheave - 2" Single Groove



Handed
☐ Yes ☒ No

If part is handed, you must specify Right or Left Hand.



Features and Notes

The Q Gate Drive Unit combines the reliability of COURION'S torque gate motor, with a heavy duty steel frame and sealed ball bearings to create a Gate Drive Unit that has no equal in the industry.

Includes Gate Drive Hardware Kit 94-000706Q

Drive Units

21-753000

Idler Belt

Features and Notes



COURION Q Style Car Gate Operator

Handed ☐ Yes ☒ No

21-754000

Back Shaft

Features and Notes



COURION Q Style Car Gate Operator

Handed ☐ Yes ☒ No

21-755000

Timing Belt Pulley

Features and Notes



COURION Q Style Car Gate Operator

Handed ☐ Yes ☒ No

21-755300

Timing Belt Pulley

Features and Notes



COURION Q Style Car Gate Operator

Handed ☐ Yes ☒ No

21-756500

Drive Cover

Features and Notes



COURION Q Style Car Gate Operator

Handed ☐ Yes ☒ No

90-805700

Ball Bearing

Features and Notes

COURION "P" Series manual sheaves, and "Q" Series Car Gate Operator



Handed ☐ Yes ☒ No

Drive Units

90-805751

Bearing

Features and Notes

Gate iSENSOR Sprocket Assembly (21-741002) and "Q" Series Car Gate Operator

5/8" SB202-10



Handed ☐ Yes ☒ No

90-805752

Flange

Features and Notes

Gate iSENSOR Sprocket Assembly (21-741002) and "Q" Series Car Gate Operator and GLS Limit Switch Idler Sprocket Assembly



Handed ☐ Yes ☒ No

90-809000

Timing Belt

Features and Notes

COURION "Q" Series Car Gate Operator



Handed ☐ Yes ☒ No

90-853300

Motor - 32 oz.

Features and Notes

COURION Q and P Series Car Gate Operators.

600 RPM, 32 oz. 220V 1.6 amps, 3-Phase



Handed ☐ Yes ☒ No

90-871100

Sheave - 2" Single Groove

Features and Notes

COURION Q and P Series Car Gate Operators, and Cart-Matic Transfer Units



Handed ☐ Yes ☒ No



Car Gate Equipment

07-228500

Gate Operator - Left Hand with 32 oz Motor

Where Used

COURION P Style Power Operated Car Gates.

Also Available:

Gate Operator - 32 oz Motor - Right Hand (#07-228501)

Gate Operator - 65 oz Motor - Left Hand (#07-228502)

Gate Operator - 65 oz Motor - Right Hand (#07-228503)

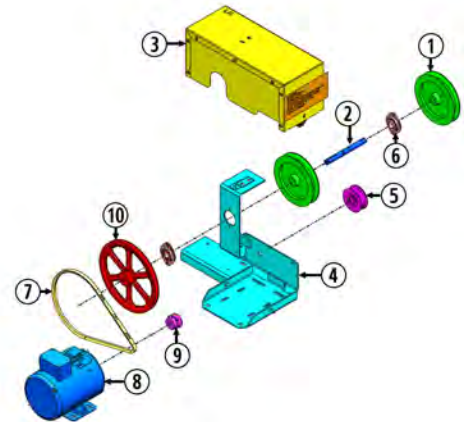


Sub Assemblies

(For additional details - see pages that follow)

Item #	Part #	Part Description
1	07-228303	Rubber Band Sheave - 7-1/4"
2	07-228504	Gate Operator Shaft
3	07-228506	Gate Operator Cover - Left Hand
4	07-228514	Gate Operator Frame Assembly - Left Hand
5	07-251000	Idler Sheave - 3-3/8"
6	90-807200	Flanged Bearing
7	90-809200	COG Belt
8	90-853300	Motor - 32 oz.
9	90-871100	Sheave - 2" Single Groove
10	90-871600	Sheave - 10" Single Groove
11	94-000020	Gate Operator Hardware Kit

Handed
☒ Yes ☐ No If part is handed, you must specify Right or Left Hand.



Features and Notes

New design as of May 2010. Directly replaces Gate Operator (Part #: 07-299904L).

Includes Gate Operator Mounting Hardware Kit #94-000020



Car Gate Equipment

07-299904

Gate Operator - 32 oz motor OBSOLETE

Where Used

COURION P Series Car Gate Replaced by Gate Operator (Part #: 07-228500 - Left Hand) and (Part #: 07-228501 - Right Hand)

Also Available:

Gate Operator - 65 oz Motor (#07-299905)

Sub Assemblies

(For additional details - see pages that follow)

Item #	Part #	Part Description
1	07-200701	Gate Operator Base Assembly - Obsolete
2	07-228303	Rubber Band Sheave - 7-1/4"
3	07-228305	Gate Sheave Shaft
4	07-229700	Gate Motor Mount
5	07-235309	Gate Operator Cover
6	07-251000	Idler Sheave - 3-3/8"
7	90-808000	Bearing
8	90-809200	COG Belt
9	90-853300	Motor - 32 oz.
10	90-871100	Sheave - 2" Single Groove
11	90-871600	Sheave - 10" Single Groove
12	94-000020	Gate Operator Hardware Kit



Handed
☒ Yes ☐ No If part is handed, you must specify Right or Left Hand.

Features and Notes

Replaced by Gate Operator (Part #: 07-228500 - Left Hand) and (Part #: 07-228501 - Right Hand)

Also Available:

Gate Operator - 65 oz Motor (#07-299905)

Drive Units - P Series

07-200701 Gate Operator Base Assembly - Obsolete

Features and Notes

COURION P Series Car Gate Operators #07-299904 and 07-299905 which have been replaced by Car Gate Operators #07-228500 to #07-228503



Handed ☒ Yes ☐ No

07-228302 Gate Operator Shaft

Features and Notes

COURION P Style Manual Gate Operator 07-299901
Measures: 3/4" x 6"



Handed ☐ Yes ☒ No

07-228303 Rubber Band Sheave - 7-1/4"

Features and Notes

COURION P Series Car Gate Operator.
Available in bronze (Part #: 07-228303B)



Include (4) External Retaining Rings (#90-868500), and (1) 3/16 x 1-1/4 Square Key

Handed ☐ Yes ☒ No

07-228304 Rubber Band - 7-1/4"

Features and Notes

COURION P Series Car Gate Operator Rubber Band Sheave #07-228303



Handed ☐ Yes ☒ No

07-228305 Gate Sheave Shaft

Features and Notes

COURION P Series Car Gate Operators #07-299904 and #07-299905
Include (4) External Retaining Rings (#90-868500)



Handed ☐ Yes ☒ No

07-228504 Gate Operator Shaft

Features and Notes

COURION P Series Car Gate Operator.
Measures: 3/4" x 7-1/8"
Main Idler Shaft (#07-228504) is not backward compatible with older Courion Gate Drives (#07-299904 or #07-299905)



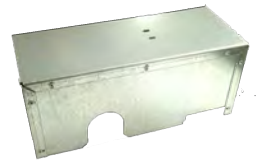
Handed ☐ Yes ☒ No

Drive Units - P Series

07-228506 Gate Operator Cover - Left Hand

Features and Notes

COURION P Series Car Gate Operator.
Also Available: Gate Operator Cover - Right Hand (#07-228507)



Handed ☒ Yes ☐ No

07-228507 Gate Operator Cover - Right Hand

Features and Notes

COURION P Series Car Gate Operators #07-228501 and 07-228503



Handed ☒ Yes ☐ No

07-228514 Gate Operator Frame Assembly - Left Hand

Features and Notes

COURION P Series Car Gate Operator.
Also Available: Gate Operator Frame Assembly - Right Hand (#07-228515)



Handed ☒ Yes ☐ No

07-228515 Gate Operator Frame Assembly - Right Hand

Features and Notes

COURION P Series Car Gate Operators #07-228501 and 07-228503



Handed ☒ Yes ☐ No

07-229700 Gate Motor Mount

Features and Notes

COURION P Series Car Gate Operators
Include (2) 5/16-18 x 1 Carriage Bolts, (2) 5/16-19 Hex Nuts, (2) 5/16 Flat Washers, and
(2) 5/16 Split Lock Washers



Handed ☐ Yes ☒ No

07-235309 Gate Operator Cover

Features and Notes

COURION P Series Car Gate Operators #07-299904 and 07-299905



Handed ☒ Yes ☐ No

Drive Units - P Series

07-251000 Idler Sheave - 3-3/8"

Features and Notes

COURION P Series Car Gate Operator.
Include (1) 3/4 x 1-3/4" Shoulder Bolt, (2) 1-1/2 x 3/4 Bushings, (5) .758ID x 1/126OD x .015 washers, and (1) 5/8-11 Flex Lock Hex Nut



Handed ☐ Yes ☒ No

07-289600 Hinge Plate Bracket Assembly

Features and Notes

COURION P Style Power Operated Car Gates



Handed ☐ Yes ☒ No

07-299932 Gate Operator - Without Motor - OBSOLETE

Features and Notes

COURION P Series Car Gate Operators #07-299904 and 07-299905
Replaced by Gate Operator (Part #: 07-228500 - Left Hand) and (Part #: 07-228501 - Right Hand)



Handed ☒ Yes ☐ No

07-299965 Gate Operator - Without Motor - OBSOLETE

Features and Notes

COURION P Series Car Gate Operators #07-299904 and 07-299905
Replaced by Gate Operator (Part #: 07-228502 - Left Hand) and (Part #: 07-228503 - Right Hand)



Handed ☒ Yes ☐ No

90-805700 Ball Bearing

Features and Notes

COURION P Series Car Gate Operator.



Handed ☐ Yes ☒ No

90-805751 Bearing

Features and Notes

COURION P Series Car Gate Operator.
5/8" SB202-10



Handed ☐ Yes ☒ No

Drive Units - P Series

90-805752 Flange

Features and Notes

COURION "P" Series manual sheaves, and "Q" Series Car Gate Operator



Handed ☐ Yes ☒ No

90-808000 Bearing

Features and Notes

COURION P Series Car Gate Operators #07-299904 and 07-299905



Handed ☐ Yes ☒ No

90-809200 COG Belt

Features and Notes

COURION P Series Car Gate Operator.



Handed ☐ Yes ☒ No

90-871100 Sheave - 2" Single Groove

Features and Notes

COURION P Series Car Gate Operator.
2" Sheave with 5/8" bore



Handed ☐ Yes ☒ No

90-871200 Sheave - 2" Double Groove

Features and Notes

COURION P Series Car Gate Operator.
2" Double Groove Sheave



Handed ☐ Yes ☒ No

90-871600 Sheave - 10" Single Groove

Features and Notes

COURION P Series Car Gate Operator.
10" sheave with 3/4" bore



Include (4) External Retaining Rings (#90-868500), and (1) 3/16 x 1-1/4 Square Key

Handed ☐ Yes ☒ No

Drive Units - P Series

90-871700 Sheave - 10" Double Groove

Features and Notes

COURION P Series Car Gate Operator.



Handed ☐ Yes ☒ No

94-000020 Gate Operator Hardware Kit

Features and Notes

COURION P Series Car Gate Operator.

GATE OPERATOR HARDWARE KIT Courion Part #: 94-000020	
(3) 3/8-16 x1" Carriage Bolts (Carriage)	
(3) 3/8 Split Lock Washer (LW)	
(3) 3/8 Flat Washer (FW)	
(3) 3/8-16 Hex Nut	
COURION 1-800-533-5760 OR 1-314-533-5700	

Handed ☐ Yes ☒ No

Motors

90-853300 Motor - 32 oz.

Where Used

COURION Q and P Series Car Gate Operators.

Features and Notes

600 RPM, 32 oz. 220V 1.6 amps, 3-Phase

Include (4) 5/16-18 x 1 Carriage Bolts, (4) 5/16-19 Hex Nuts, (4) 5/16 Flat Washers, and (4) 5/16 Split Lock Washers



Handed ☐ Yes ☒ No

90-853500 Motor - 65 oz.

Where Used

COURION "P" Series Car Gate Operators

Features and Notes

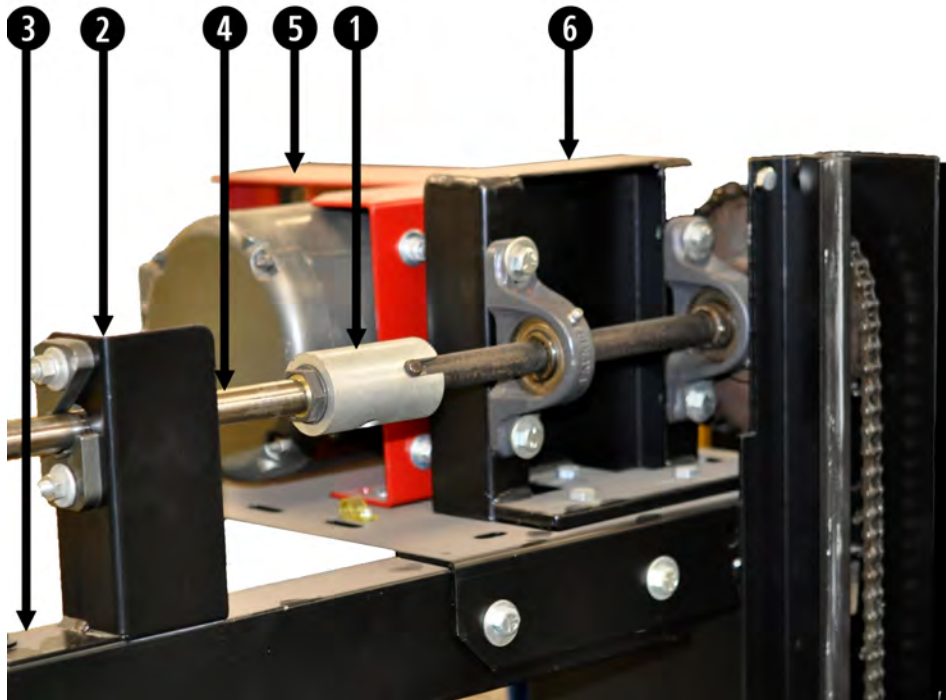
600 RPM, 65 oz. 220V, 3.2 amps, 3-Phase with CSA Label



Handed ☐ Yes ☒ No



Cross Drive and Sprocket Units



General Description

COURION Q Series Car Gates

Parts Manual Sections

- 1 Cross Drive Shaft & Angle Hardware Kit
- 2 Cross Bearing Bracket Hardware Kit
- 3 Cross Drive Angle
- 4 Cross Drive Shaft
- 5 Gate Drive Units and Motors
- 6 Gate Sprockets and Bearing Units

The type and length of your Gate Cross Drive and Cross Drive Angle are job specific. Please call Courion with your JOB NUMBER, JOB NAME or JOB LOCATION to order a new Cross Drive.

Cross Drives

07-102601 Cross Angle Knee Brace

Features and Notes

COURION P Style Car Gate Guides

Include Hardware Kit #94-000090.



Handed ☐ Yes ☒ No

21-707900 Knee brace

Features and Notes

COURION Q Style Gate Guides

Include Angle and Knee Brace Hardware Kit #94-000705Q



Handed ☐ Yes ☒ No

21-734000 Cross Bearing Bracket

Features and Notes

COURION Q Style Car Gates Cross Drive Bracket Hardware Kit

Sell Hardware Kit 94-000703Q



Handed ☐ Yes ☒ No

21-734700 Cross Bearing Half

Features and Notes

COURION Q Style Car Gates



Handed ☐ Yes ☒ No

21-737000 Coupling Tube

Features and Notes

COURION Q Style Car Gates



Handed ☐ Yes ☒ No

21-737500 Coupling Support

Features and Notes

COURION Q Style Car Gates

Include (1) 3/8" x 2" Drive Pin (#21-733015)



Handed ☐ Yes ☒ No

Cross Drives

90-808700 Keyless Transtorque Bushing - 3/4"

Features and Notes

COURION Q Style Car Gate Cross Drive Shaft



Handed ☐ Yes ☒ No

94-000090 Cross Angle Bracing Hardware Kit

Features and Notes

COURION P Style Gate Guides

CROSS ANGLE BRACE HARDWARE KIT Courion Part #: 94-000090
(5) 3/8-16 x 1-1/4 Hex Head Cap Screws (5) 3/8-16 x 1 Hex Head Cap Screws (10) 3/8 Lock Washers (10) 3/8-16 Hex nut (10) 3/8 Flat Washers
COURION 1-800-533-5760 OR 314-533-5700

Handed ☐ Yes ☒ No

94-000705Q Angle & Knee Brace Hardware Kit

Features and Notes

COURION Q Style Car Gates

ANGLE AND KNEE BRACE HARDWARE KIT Courion Part #: 94-000705Q
(6) 3/8-16 x 1-1/2 Hex Head Cap Screws (HHCS) (6) 3/8 Spring Lock Washers (6) 3/8 Flat Washers (6) 3/8-16 Hex nuts (5) 5/16-18 x 1 Hex Head Cap Screws (RHCS) (5) 5/16 Spring Lock Washers (5) 5/16-18 Hex nuts
COURION 1-800-533-5760 OR 314-533-5700

Handed ☐ Yes ☒ No

94-000702Q Cross Drive Shaft & Angle Hardware Kit

Features and Notes

COURION Q Style Car Gates

CROSS ANGLE HARDWARE KIT Courion Part #: 94-000702Q
(7) 3/8-16 x 1-1/4 Hex Head Cap Screws (HHCS) (7) 3/8 Flat Washers (7) 3/8 Spring Lock Washers (7) 3/8-16 Hex nuts (2) Coupling Tubes (P21-127002) (2) Tractorbush (RHO-1008710)
COURION 1-800-533-5760 OR 314-533-5700

Handed ☐ Yes ☒ No

94-000703Q Cross Bearing Bracket Hardware Kit

Features and Notes

COURION Q Style Car Gates

CROSS BEARING BRACKET HARDWARE KIT Courion Part #: 94-000703Q
(1) Cross Bearing Bracket (2) Cross Bearing (2) 5/16-18 x 1 Hex Head Cap Screws (HHCS) (2) 5/16-18 x 1-1/2 Hex Head Cap Screws (RHCS) (7) 5/16 Flat Washers (5) 5/16 Spring Lock Washers (5) 5/16-18 Hex nuts
COURION 1-800-533-5760 OR 314-533-5700

Handed ☐ Yes ☒ No

CDS shaft Cross Drive Shaft

Features and Notes

COURION Q Style Car Gate Cross Drive



The type and length of your Q Gate Cross Drive is job specific. Please call Courion with your JOB NUMBER, JOB NAME or JOB LOCATION to order a new Cross Drive.

Handed ☐ Yes ☒ No

Cross Drives

CDAngle

Cross Drive Angle

Features and Notes

COURION Q and P Series Car Gate Cross Drive

The type and length of your Q Gate Cross Drive is job specific. Please call Courion with your JOB NUMBER, JOB NAME or JOB LOCATION to order a new Cross Drive.

Handed ☐ Yes ☒ No



Sprocket Assemblies

07-104500 Ratio Drive Sprocket - #41B30

Features and Notes

COURION Ratio Sprocket Assembly with 41 Chain

Ratio Drive Sprockets vary by Job. Please have your JOB NUMBER, JOB NAME, or JOB LOCATION when ordering.

41B30 with 3/4" Bore



Handed ☐ Yes ☒ No

07-104501 Ratio Drive Sprocket - #41B26

Features and Notes

COURION Ratio Sprocket Assembly with #41 Chain

Ratio Drive Sprockets vary by Job. Please have your JOB NUMBER, JOB NAME, or JOB LOCATION when ordering.

41B26 with 3/4" Bore



Handed ☐ Yes ☒ No

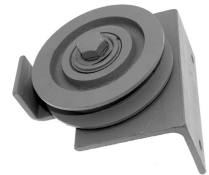
07-106400 Gate Idler Sheave Assembly - 5"

Features and Notes

COURION P Style Car Gates (Wide Gates Only)

Mounts on Car Gate Cross Angle for Wide Car Gates

Replacement 5" Sheave Only (Part # 03-305000)



Handed ☐ Yes ☒ No

07-106402 Gate Sprocket Assembly

Features and Notes

COURION Power Operated P Style Car Gates with GLS Limit Switch or Rotary Sprocket Limit Switch



Handed ☐ Yes ☒ No

07-107020 Gate Sprocket Assembly

Features and Notes

COURION Magna Grip Operator Style Car Gates



Handed ☒ Yes ☐ No

07-228400 Sprocket Assembly Shaft

Features and Notes

Car Gate Sprocket Assemblies

Measures: 3/4" x 4-1/8"



Handed ☐ Yes ☒ No

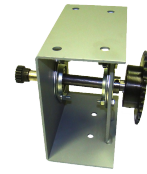
Sprocket Assemblies

07-612000

Gate Idler Sprocket Assembly

Features and Notes

COURION P Style Car Gates with Geared Limit Switches



Handed ☐ Yes ☒ No

21-730010

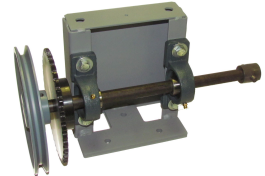
Gate Sprocket & Bearing Unit - Drive Side, Single-Section Gate with #40 Chain

Features and Notes

COURION Q Style Single-Section Car Gates with #40 Chain

Also Available: Gate Sprocket & Bearing Unit for Drive Side, Single Section Gate with #41 Chain (#21-730000)

Include (3) 3/8-16 x 1-1/4 Hex Head Cap Screws, (3) 3/8 Split Lock Washers, and (3) 3/8-16 Hex Nuts.



Handed ☒ Yes ☐ No

21-730011

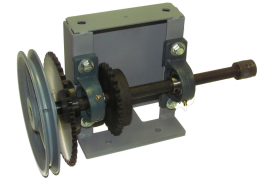
Gate Sprocket & Bearing Unit - Drive Side, 2-Section Gate with #40 Chain

Features and Notes

COURION Q Style 2-Section Car Gate with #40 Chain

Also Available: Gate Sprocket & Bearing Unit for Drive Side, 2-Section Gate with #41 Chain (#21-730002)

Include (3) 3/8-16 x 1-1/4 Hex Head Cap Screws, (3) 3/8 Split Lock Washers, and (3) 3/8-16 Hex Nuts.



Handed ☐ Yes ☒ No

21-730012

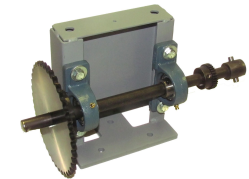
Gate Sprocket & Bearing Unit - Limit Switch Side, Single-Section Gate with #40 Chain

Features and Notes

COURION Q Style Single-Section Car Gate with #40 Chain

Also Available: Gate Sprocket & Bearing Unit for Limit Switch Side, Single-Section Gate with #41 Chain (#21-730050)

Include (3) 3/8-16 x 1-1/4 Hex Head Cap Screws, (3) 3/8 Split Lock Washers, and (3) 3/8-16 Hex Nuts.



Handed ☒ Yes ☐ No

21-730013

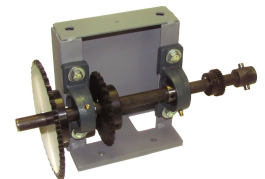
Gate Sprocket & Bearing Unit - Limit Switch Side, 2-Section Gate with #40 Chain

Features and Notes

COURION Q Style 2-Section Car Gate with #40 Chain

Also Available: Gate Sprocket & Bearing Unit for Limit Switch Side, 2-Section Gate with #41 Chain (#21-730052)

Include (3) 3/8-16 x 1-1/4 Hex Head Cap Screws, (3) 3/8 Split Lock Washers, and (3) 3/8-16 Hex Nuts.



Handed ☒ Yes ☐ No

21-730014

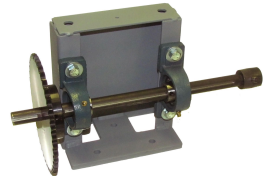
Gate Sprocket & Bearing Unit - Manual Single-Section Gate with #40 Chain

Features and Notes

COURION Q Style Single-Section Car Gate with #40 Chain

Also Available: Gate Sprocket & Bearing Unit for Manual Single Section Gate with #41 Chain (#21-731000)

Include (3) 3/8-16 x 1-1/4 Hex Head Cap Screws, (3) 3/8 Split Lock Washers, and (3) 3/8-16 Hex Nuts.



Handed ☒ Yes ☐ No

Sprocket Assemblies

21-730015

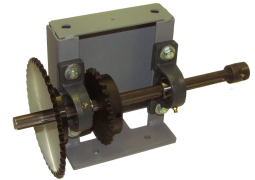
Gate Sprocket & Bearing Unit - Manual 2-Section Gate with #40 Chain

Features and Notes

COURION Q Style 2-Section Car Gate with #40 Chain

Also Available: Gate Sprocket & Bearing Unit for Manual 2-Section Gate with #41 Chain (#21-731002)

Include (3) 3/8-16 x 1-1/4 Hex Head Cap Screws, (3) 3/8 Split Lock Washers, and (3) 3/8-16 Hex Nuts.



Handed ☒ Yes ☐ No

21-733000

Bearing Shaft Assembly

Features and Notes

COURION Q Style Sprocket & Bearing Units



Handed ☐ Yes ☒ No

90-808500

Pillow Block Bearing

Features and Notes

COURION Q Style Sprocket & Bearing Units

Include three (3) 3/8-16 x 1-1/4" Hex Bolts, (3) 3/8" Flat Washers, (3) 3/8" Split Lock Washers, and (3) 3/8-16 Hex Nuts



Handed ☐ Yes ☒ No

90-870725

Sheave - 7-1/4"

Features and Notes

COURION Q Style Sprocket & Bearing Units

Include (1) 3/16 x 1-1/4" Square Key and (1) 5/16-18 x 3/8 set screw.



Handed ☐ Yes ☒ No

90-977600

Sprocket - 40B40

Features and Notes

COURION Q Style Car Gate Sprocket Assemblies with #40 Chain

40B40 with 3/4" Bore

Handed ☐ Yes ☒ No

90-977700

Sprocket - 40B25

Features and Notes

COURION Q Style Car Gate Sprocket Assemblies with #40 Chain

40B25 with 3/4" Bore



Handed ☐ Yes ☒ No

Sprocket Assemblies

90-979000

Sprocket - #41B40

Features and Notes

COURION Q Style Sprocket & Bearing Units with #41 Chain

#41B40 with 3/4" Bore

Include (1) 3/16 x 1-1/4" square key and (1) 5/16-18 x 3/8" set screw



Handed ☐ Yes ☒ No

90-979022

Sprocket - #41B25

Features and Notes

COURION Q Style Sprocket & Bearing Units with #41 Chain

#41B25 with 3/4" Bore

Include (1) 3/16 x 1-1/4" square key and (1) 5/16-18 x 3/8" set screw



Handed ☐ Yes ☒ No



Car Gate Equipment

07-210000

Q Gate Contact Assembly

Where Used

COURION Car Gates

When replacing P or KL Type Gate Contact on a P Series Car Gate, you need to order Retrofit Kit 94-000150 along with the Q Gate Contact Assembly.

Also Available: Explosion Resistant (#07-210079)

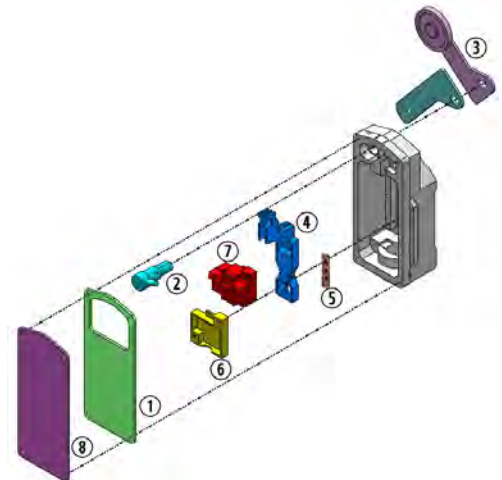


Sub Assemblies

(For additional details - see pages that follow)

Item #	Part #	Part Description
1	07-212000	Gasket
2	07-212500	Switch Pivot
3	07-213750	Actuator Arm Assembly
4	07-214000	Switch Actuator
5	07-214500	Spring
6	07-215000	Zone Filler Plate
7	07-220000	Universal Modular Contact - UMC
8	90-200500	Cover - NEMA 4, 12 & 13

Handed
☒ Yes ☐ No If part is handed, you must specify Right or Left Hand.



Features and Notes

NEMA 4, 12 and 13 - standard

UL Listed. CSA Approved. Meets all major international safety codes: ASME A17.1, CSA B44-M90, EN81-1, and BS 5655-1

Includes Gate Contact Mounting Hardware Kit #94-000110

Gate Contacts

07-211079 Cover - Hazardous Location

Features and Notes

COURION Q Style Car Gate - Hazardous Environment



Handed ☐ Yes ☒ No

07-212000 Gasket

Features and Notes

COURION Q Style Gate Contact



Handed ☐ Yes ☒ No

07-212500 Switch Pivot

Features and Notes

COURION Q Style Gate Contact



Handed ☐ Yes ☒ No

07-213750 Actuator Arm Assembly

Features and Notes

COURION Q Style Gate Contact



Handed ☒ Yes ☐ No

07-214000 Switch Actuator

Features and Notes

COURION Q and P Series Car Gates



Handed ☐ Yes ☒ No

07-214500 Spring

Features and Notes

COURION Q and P Series Car Gates



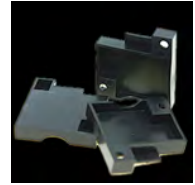
Handed ☐ Yes ☒ No

Gate Contacts

07-215000 Zone Filler Plate

Features and Notes

COURION Q Interlocks and Gate Contacts



Handed ☐ Yes ☒ No

07-220000 Universal Modular Contact - UMC

Features and Notes

COURION Q Series Interlocks and Gate Contacts



Handed ☐ Yes ☒ No

90-200500 Cover - NEMA 4, 12 & 13

Features and Notes

COURION Q Style Gate Contact

Include (1) Gasket (#07-212000), and (8) Captive Screws (#90-202500)



Handed ☐ Yes ☒ No



Car Gate Equipment

07-489500

P Gate Contact Assembly - Obsolete

Where Used

COURION Car Gates

Replace with Q Gate Contact Assembly (#07-210000) and Q Gate Retrofit Kit #94-000150

Sub Assemblies

(For additional details - see pages that follow)

Item #	Part #	Part Description
1	04-548604	Limit Switch Box Cover
2	04-548706	Gate Contact
3	04-549000	Spring
4	07-400400	Gate Contact Lever
5	07-400500	Movable Contact



Handed
☐ Yes ☒ No If part is handed, you must specify Right or Left Hand.

Features and Notes

Gate Contacts

01-046400 Relay Pin

Features and Notes

Gate Contact (Part #:04-548706) and Contact (Part #: 04-500600)

Measures: 1/8" x 7/8"



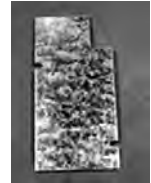
Handed ☐ Yes ☒ No

04-548604 Limit Switch Box Cover

Features and Notes

COURION Car Gates

Replace with Q Gate Contact Assembly (#07-210000) and Q Gate Retrofit Kit #94-000150



Handed ☐ Yes ☒ No

04-548701 Finger Contact Assembly

Features and Notes

COURION Car Gate Contact



Handed ☐ Yes ☒ No

04-548706 Gate Contact

Features and Notes

COURION Car Gate Contact



Handed ☐ Yes ☒ No

04-549000 Spring

Features and Notes

COURION Car Gates

Replace with Q Gate Contact Assembly (#07-210000) and Q Gate Retrofit Kit #94-000150



Handed ☐ Yes ☒ No

07-109500 Gate Contact Brace

Features and Notes

COURION P Style Car Gates



Handed ☐ Yes ☒ No

Gate Contacts

07-400400 Gate Contact Lever

Features and Notes

COURION KL Car Gate Contact



Handed ☐ Yes ☒ No

07-400402 Lever Assembly - 1/2" Hole

Features and Notes

COURION KL Car Gate Contact



Handed ☐ Yes ☒ No

07-400403 Lever Assembly - 7/16" Hole

Features and Notes

COURION KL Car Gate Contact



Handed ☐ Yes ☒ No

07-400500 Movable Contact

Features and Notes

COURION Car Gate Contact



Handed ☐ Yes ☒ No

94-000110 Gate Contact Hardware Kit

Features and Notes

COURION P Style Gate Guides



Handed ☐ Yes ☒ No

94-000150 Gate Switch Retrofit Hardware Kit

Features and Notes

When adding a Q Series Gate Contact (#07-210000 or #07-210079) to a P Series Car Gate

Does not include QGS Gate Contact (07-210000) - Must be ordered separately.



Handed ☐ Yes ☒ No



Car Gate Equipment

07-489501

KL Gate Contact Assembly - OBSOLETE

Where Used

COURION Car Gates

Replace with Q Gate Contact Assembly (#07-210000) and Q Gate Retrofit Kit #94-000150

Sub Assemblies

(For additional details - see pages that follow)

Item #	Part #	Part Description
1	04-548604	Limit Switch Box Cover
2	04-548706	Gate Contact
3	04-549000	Spring
4	07-400402	Lever Assembly
5	07-400500	Movable Contact



Handed

☐ Yes ☒ No

If part is handed, you must specify Right or Left Hand.

Features and Notes



Car Gate Equipment

21-741001

Gate iSENSOR.plc

Where Used

COURION Q Style Car Gates with Next Generation iSYSTEM Controls including the Gate iDRIVE.plc

Sub Assemblies

(For additional details - see pages that follow)

Item #	Part #	Part Description
1	01-713500	Encoder with Connector Assembly
2	01-713600	Encoder Mounting Bracket
3	21-742001	Cover
4	21-742500	Trans Gear
5	21-743000	Trans Gear
6	21-744100	Encoder Shaft
7	21-744200	iSENSOR Sprocket
8	21-744500	Encoder Bracket
9	90-713601	Encoder Coupler
10	90-805500	Ball Bearing With Flange
11	94-741001	Gate iSENSOR Hardware Kit



Handed
☐ Yes ☒ No If part is handed, you must specify Right or Left Hand.

Features and Notes

Replaced in May 2010 with the Gate iSENSOR.g which is used in conjunction with the Gate iDRIVE.g

Limit Switches

01-713500

Encoder with Connector Assembly

Features and Notes

COURION Gate iSENSOR.plc
Includes multi-pin connector



Handed ☐ Yes ☒ No

01-713600

Encoder Mounting Bracket

Features and Notes

COURION Gate iSENSOR.plc
Used with Encoder (Part #90-713600)



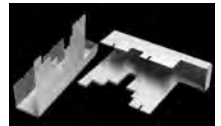
Handed ☐ Yes ☒ No

21-742001

Cover

Features and Notes

COURION Gate iSENSOR.plc



Handed ☐ Yes ☒ No

21-742500

Trans Gear

Features and Notes

COURION Gate iSENSOR.plc
64 tooth gear



Handed ☐ Yes ☒ No

21-743000

Trans Gear

Features and Notes

COURION Gate iSENSOR.plc
20 Tooth gear



Handed ☐ Yes ☒ No

21-744100

Encoder Shaft

Features and Notes

COURION Gate iSENSOR.plc



Handed ☐ Yes ☒ No

Limit Switches

21-744200

iSENSOR Sprocket

Features and Notes

COURION Gate iSENSOR.plc



Handed ☐ Yes ☒ No

21-744500

Encoder Bracket

Features and Notes

COURION Gate iSENSOR.plc



Handed ☐ Yes ☒ No

90-713601

Encoder Coupler

Features and Notes

COURION Gate iSENSOR.plc



Handed ☐ Yes ☒ No

90-805500

Ball Bearing With Flange

Features and Notes

COURION Gate iSENSOR.plc



Handed ☐ Yes ☒ No

94-741001

Gate iSENSOR Hardware Kit

Features and Notes

COURION Next Generation iSYSTEM - used with Gate iDRIVE.plc
Includes necessary fasteners to mount the Gate iSENSOR.plc



Handed ☐ Yes ☒ No



Car Gate Equipment

21-741002

Gate iSENSOR.g

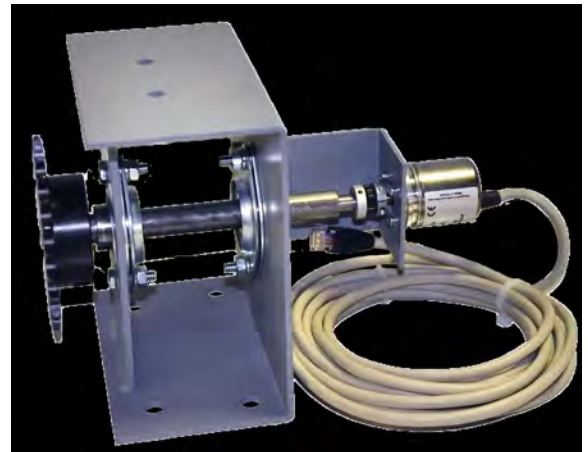
Where Used

COURION P Style Car Gates with Next Generation iSYSTEM Controls including the Gate iDRIVE.g

Sub Assemblies

(For additional details - see pages that follow)

Item #	Part #	Part Description
1	07-613500	Chain Keeper
2	21-745000	iSENSOR Encoder Bracket
3	90-713605	Flex Coupler
4	90-713700	Gate iSENSOR.g Encoder
5	90-805751	Bearing
6	90-805752	Flange
7	90-979600	Sprocket



Handed
☐ Yes ☒ No If part is handed, you must specify Right or Left Hand.

Features and Notes

Serial Encoder that monitors exact position of Car Gate during entire travel.

Plugs directly into COURION's iDIVE.g VFD Car Top Control

Includes necessary hardware kit for mounting.

Limit Switches

07-613500

Chain Keeper

Features and Notes

COURION Geared Limit Switch and Gate iSENSOR.
Include (2) 1/4-20 x 3/4" Round Head Machine Screws and (2) 1/4 Flat Washers



Handed ☐ Yes ☒ No

21-745000

iSENSOR Encoder Bracket

Features and Notes

Gate iSENSOR Sprocket Assembly (21-741002)



Handed ☐ Yes ☒ No

90-713605

Flex Coupler

Features and Notes

Gate iSENSOR Sprocket Assembly (21-741002)
3/8" TO 6mm



Handed ☐ Yes ☒ No

90-713700

Gate iSENSOR.g Encoder

Features and Notes

Gate iSENSOR Sprocket Assembly (21-741002) and Gate iSENSOR.G (21-741003)
Serial Encoder



Handed ☐ Yes ☒ No

90-805751

Bearing

Features and Notes

Gate iSENSOR Sprocket Assembly (21-741002) and "Q" Series Car Gate Operator
5/8" SB202-10



Handed ☐ Yes ☒ No

90-805752

Flange

Features and Notes

Gate iSENSOR Sprocket Assembly (21-741002) and "Q" Series Car Gate Operator and GLS
Limit Switch Idler Sprocket Assembly



Handed ☐ Yes ☒ No

Limit Switches

90-979600

Sprocket

Features and Notes

Gate iSENSOR Sprocket Assembly (21-741002) and GLS Limit Switch Idler Sprocket Assembly
#41B24 x 5/8" Bore with 3/16" Keyway



Handed ☐ Yes ☒ No



Car Gate Equipment

21-741004

Gate iSENSOR.g - Q Style Gate

Where Used

COURION Q Style Car Gates with Next Generation Control System (Version 2.0)

Sub Assemblies

(For additional details - see pages that follow)

Item #	Part #	Part Description
1	21-741002	Gate iSENSOR.g - P Style Gate
2	94-741004	Gate iSENSOR.g Hardware Kit - Q Gate



Handed
☐ Yes ☒ No

If part is handed, you must specify Right or Left Hand.



21-741003 is OBSOLETE

Replaced by
 21-741004
 Gate iSENSOR.g

Features and Notes

COURION's Gate iSENSOR.g provides highly accurate position sensing information to the iLEARN Door Control via COURION's iWIRE CANBus network. The Gate iSENSOR.g is built around a multi-turn Encoder that is dust, oil, and moisture resistant.

Includes necessary mounting hardware.



Car Gate Equipment

21-740000

Q Geared Limited Switch

Where Used

COURION Q Series Car Gates

Also Available: GLS Limit Switch - Explosion Resistant (#21-740079)

Use GLS Retrofit Kit #07-611000) on P Series Car Gates

Sub Assemblies

(For additional details - see pages that follow)

Item #	Part #	Part Description
1	21-742000	Switch Cover
2	21-742500	Trans Gear
3	21-743000	Trans Gear
4	21-743500	Cam Gear
5	21-743700	Limit Switch Cam
6	90-983200	Microswitch
7	90-983250	Roller Arm



Handed
☐ Yes ☒ No If part is handed, you must specify Right or Left Hand.

Features and Notes

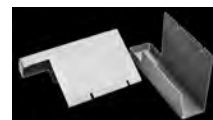
Includes GLS Mounting Hardware Kit
#94-000706Q

Limit Switches

21-742000 Switch Cover

Features and Notes

COURION Q Style GLS Limit Switch
Available in stainless (Part #: 21-742000S)



Handed ☐ Yes ☒ No

21-742500 Trans Gear

Features and Notes

COURION Gate iSENSOR.plc
64 tooth gear



Handed ☐ Yes ☒ No

21-743000 Trans Gear

Features and Notes

COURION Gate iSENSOR.plc
20 Tooth gear



Handed ☐ Yes ☒ No

21-743500 Cam Gear

Features and Notes

COURION Gate iSENSOR.plc



Handed ☐ Yes ☒ No

21-743700 Limit Switch Cam

Features and Notes

COURION Q Style GLS Limit Switch



Handed ☐ Yes ☒ No

90-983200 Microswitch

Features and Notes

COURION QLSII and P Style Limit Switch, and Q Style Auto-Sta Set Switch
Electrical Rating - 300VAC, 10A
Rated suitable for NEMA 1, 2, 3, 4, 7, 9 & 12 environments and is classified IP68.
UL and CSA Approved



Handed ☐ Yes ☒ No

Limit Switches

90-983250

Roller Arm

Features and Notes

COURION Q Style Auto-Sta Set Switch
Available in Stainless (Part #: 90-983250S)



Handed ☐ Yes ☒ No



Car Gate Equipment

07-199400

Sprocket & Limit Switch - OBSOLETE

Where Used

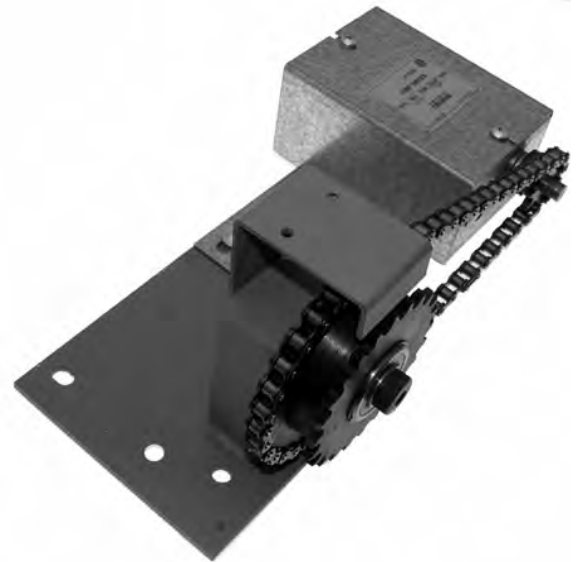
COURION P Style Car Gates

Replace with COURION GLS Limit Switch

Sub Assemblies

(For additional details - see pages that follow)

Item #	Part #	Part Description
1	07-106402	Gate Sprocket Assembly
2	07-599200	Rotary Limit Switch Assembly - Obsolete
3	90-819700	Chain - #41 Roller
4	90-820900	Connecting Link - Straight #41



Handed
☒ Yes ☐ No If part is handed, you must specify Right or Left Hand.

Features and Notes



Car Gate Equipment

07-199404

Sprocket & Limit Switch Assembly - Obsolete

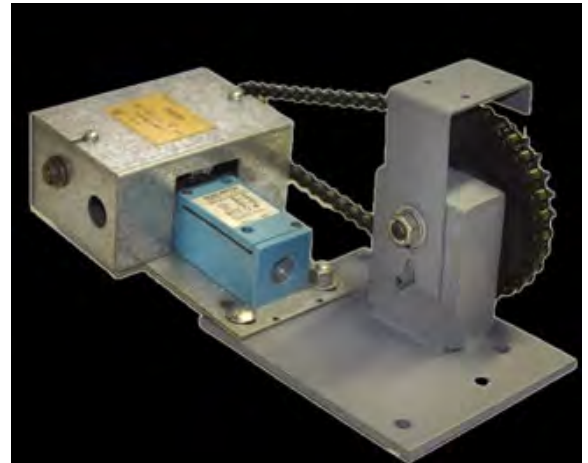
Where Used

COURION P Style Car Gates

Sub Assemblies

(For additional details - see pages that follow)

Item #	Part #	Part Description
1	07-106402	Gate Sprocket Assembly
2	07-599300	Rotary Limit Switch - OBSOLETE
3	90-819700	Chain - #41 Roller
4	90-820900	Connecting Link - Straight #41



Handed
☒ Yes ☐ No If part is handed, you must specify Right or Left Hand.

Features and Notes



Car Gate Equipment

07-199405

Sprocket & Limit Switch Assembly - Obsolete

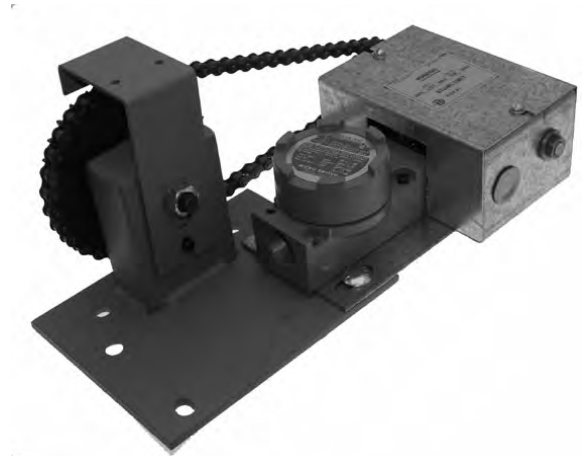
Where Used

COURION P Style Car Gates

Sub Assemblies

(For additional details - see pages that follow)

Item #	Part #	Part Description
1	07-106402	Gate Sprocket Assembly
2	07-599400	Rotary Limit Switch - Explosion Resistant OBSOLETE
3	90-819700	Chain - #41 Roller
4	90-820900	Connecting Link - Straight #41



Handed
☒ Yes ☐ No If part is handed, you must
specify Right or Left Hand.

Features and Notes



Car Gate Equipment

07-599200

Rotary Limit Switch Assembly - Obsolete

Where Used

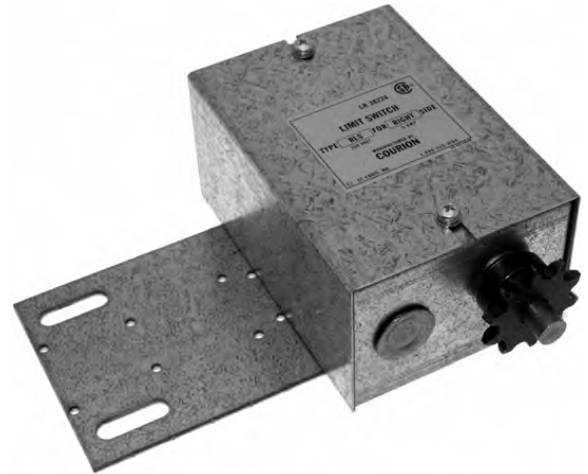
COURION Rotary Sprocket Limit Switch - Obsolete

Replace with COURION'S GLS Limit Switch

Sub Assemblies

(For additional details - see pages that follow)

Item #	Part #	Part Description
1	07-500302	Micro Switch Bracket
2	07-500400	Sprocket
3	07-500500	Collar
4	07-500700	Threaded Shaft
5	07-501100	Brass Nut
6	07-502000	Mounting Bracket
7	07-502100	Cover
8	07-502300	Retainer Lip
9	90-806100	Bearing
10	90-806300	Bearing
11	90-824900	Knock-Out Seal
12	90-875900	Microswitch



Handed
☒ Yes ☐ No If part is handed, you must specify Right or Left Hand.

Features and Notes



Car Gate Equipment

07-599300

Rotary Limit Switch - OBSOLETE

Where Used

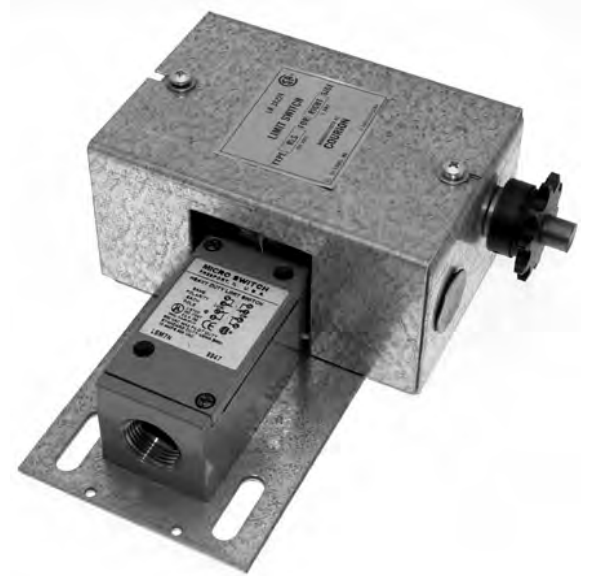
COURION P Style Car Gates - OBSOLETE

Replace with COURION'S GLS Limit Switch

Sub Assemblies

(For additional details - see pages that follow)

Item #	Part #	Part Description
1	07-500400	Sprocket
2	07-500500	Collar
3	07-500700	Threaded Shaft
4	07-501100	Brass Nut
5	07-502000	Mounting Bracket
6	07-502200	Cover - NEMA 4, 7 & 9
7	07-502300	Retainer Lip
8	90-806100	Bearing
9	90-806300	Bearing
10	90-824900	Knock-Out Seal
11	90-983200	Microswitch
12	90-983301	Actuator Arm



Handed
☒ Yes ☐ No If part is handed, you must specify Right or Left Hand.

Features and Notes



Car Gate Equipment

07-599400 Rotary Limit Switch - Explosion Resistant OBSOLETE

Where Used

COURION P Style Car Gates - OBSOLETE.

Replace with COURION'S GLS Limit Switch

Sub Assemblies

(For additional details - see pages that follow)

Item #	Part #	Part Description
1	07-500400	Sprocket
2	07-500500	Collar
3	07-500700	Threaded Shaft
4	07-501100	Brass Nut
5	07-502000	Mounting Bracket
6	07-502200	Cover - NEMA 4, 7 & 9
7	07-502300	Retainer Lip
8	90-806100	Bearing
9	90-806300	Bearing
10	90-824900	Knock-Out Seal
11	90-983300	Microswitch - Explosion Resistant
12	90-983301	Actuator Arm



Handed
☒ Yes ☐ No If part is handed, you must specify Right or Left Hand.

Features and Notes

Limit Switches

07-106402 Gate Sprocket Assembly

Features and Notes

COURION Rotary Sprocket Limit Switch



Handed ☐ Yes ☒ No

07-107090 Gate Sprocket Assembly

Features and Notes

COURION Rotary Sprocket Limit Switch - Obsolete

Replace with COURION'S GLS Limit Switch
Available in stainless (Part #: 07-107090S)



Handed ☐ Yes ☒ No

07-500302 Micro Switch Bracket

Features and Notes

COURION Rotary Limit Switch



Handed ☐ Yes ☒ No

07-500400 Sprocket

Features and Notes

COURION Rotary Limit Switch
Available in stainless (Part #: 07-500400S)

#41B10 with 1/2" bore



Handed ☐ Yes ☒ No

07-500500 Collar

Features and Notes

COURION Rotary Limit Switch
Include (1) 3/32 x 3/4 Roll Pin



Handed ☐ Yes ☒ No

07-500700 Threaded Shaft

Features and Notes

COURION Rotary Limit Switch
Include (1) 1/8 x 3/4 Roll Pin and (1) 3/32 x 3/4 Roll Pin



Handed ☐ Yes ☒ No

Limit Switches

07-501100 Brass Nut

Features and Notes

COURION Rotary Limit Switch



Handed ☐ Yes ☒ No

07-502000 Mounting Bracket

Features and Notes

COURION Rotary Limit Switch



Handed ☐ Yes ☒ No

07-502100 Cover

Features and Notes

COURION Rotary Limit Switch



Handed ☐ Yes ☒ No

07-502200 Cover - NEMA 4, 7 & 9

Features and Notes

COURION Rotary Limit Switch



Handed ☐ Yes ☒ No

07-502300 Retainer Lip

Features and Notes

COURION Rotary Limit Switch



Handed ☐ Yes ☒ No

07-599200 Rotary Limit Switch Assembly - Obsolete

Features and Notes

COURION Rotary Sprocket Limit Switch



Handed ☐ Yes ☒ No

Limit Switches

07-599300

Rotary Limit Switch - OBSOLETE

Features and Notes

COURION Rotary Sprocket Limit Switch



Handed ☐ Yes ☒ No

07-599400

**Rotary Limit Switch - Explosion Resistant
OBSOLETE**

Features and Notes

COURION Rotary Sprocket Limit Switch



Handed ☐ Yes ☒ No

07-599500

Chain Guard

Features and Notes

COURION Rotary Limit Switch



Handed ☐ Yes ☒ No

90-806100

Bearing

Features and Notes

COURION Rotary Limit Switch
3/8" Bore x 5/8" OD x 7/8" Flange x 3/8" High Bronze Bearing



Handed ☐ Yes ☒ No

90-806300

Bearing

Features and Notes

COURION Rotary Limit Switch
1/2" Bore x 5/8" OD x 7/8" Flange x 3/8" High Bronze Bearing



Handed ☐ Yes ☒ No

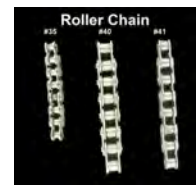
90-819700

Chain - #41 Roller

Features and Notes

COURION Rotary Sprocket Limit Switch
Available in Stainless (Part #: 90-819700S)

Include (1) #41 Connecting Link)#90-820900)



Handed ☐ Yes ☒ No

Limit Switches

90-824900 Knock-Out Seal

Features and Notes

COURION Rotary Limit Switch
For 7/8" Dia. Hole



Handed ☐ Yes ☒ No

90-875900 Microswitch

Features and Notes

COURION Rotary Limit Switch



Handed ☐ Yes ☒ No

90-983200 Microswitch

Features and Notes

COURION Rotary Sprocket Limit Switch and GLS Limit Switch
Electrical Rating - 300VAC, 10A
Rated suitable for NEMA 1, 2, 3, 4, 7, 9 & 12 environments and is classified IP68.
UL and CSA Approved



Handed ☐ Yes ☒ No



