

# INTERLOCKS

INTERLOCKS - LOCKS AND CONTACTS - SIDE OPPOSITE LATCHES



ONE COMPANY  
So Many Options



Freight Door Systems



Freight Car Enclosures



IUEC Installation



Material Handling  
Systems



Service Parts



Service Parts



HARRIS PREBLE

Service Parts

ENERGY.

Service Parts



## Interlocks and Switches

### Interlocks

Q Series .....	3
P Series.....	14
Lock Bars and Auto Latches .....	26
D Series .....	30
Safety Stop Bars .....	48
X Series .....	51
HG Series .....	67
Lock-Out Rods and Switch Cams .....	69
Side Opposite Latches .....	72
Roller Arms .....	76



# Interlocks

**21-240000**

**QIP interlock**

## Where Used

COURION "Q" Series Power Operated Freight Doors with Retiring Cam. Also Available: QIP - stainless (#21-240000S) and QIPE - hazardous location (# 21-240079)

## Features and Notes

NEMA 4, 12 and 13 standard. NEMA 7 and 9 available.

UL Listed and CSA approved. Tested to EN 81-1 and BS 5655-1 standards. Electrical Rating: Safety Contacts - 300 VAC, 2A and Zone Contacts - 300 VAC, 10A

Includes Courion Mounting Hardware Kit 94-000130Q

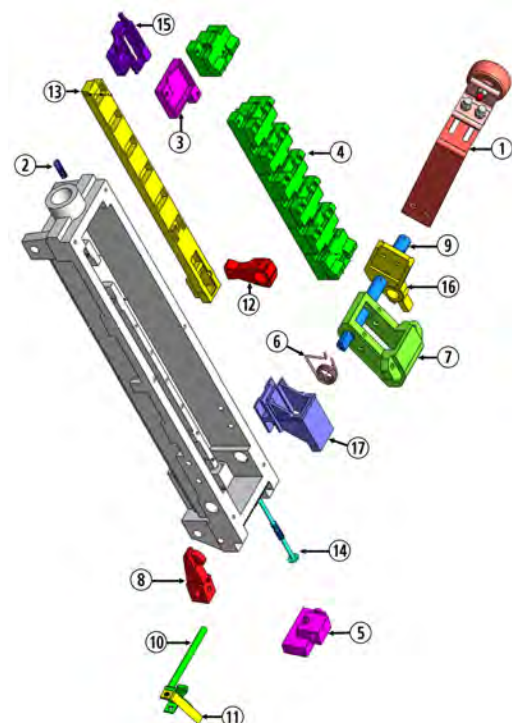
## Sub Assemblies

(For additional details - see pages that follow)

Item #	Part #	Part Description
1	04-000510	Roller Arm Assembly - Short
2	04-224000	Shuttle Spring
3	07-215000	Zone Filler Plate
4	07-220000	Universal Modular Contact - UMC
5	21-242000	DCS Lifter
6	21-242200	Redundant Spring
7	21-242500	Interlock Latch
8	21-242700	Upper Panel Lock
9	21-243000	Pivot Shaft
10	21-243300	Cam Follower
11	21-243400	Assist Spring
12	21-243500	Interlock Arm
13	21-245000	Actuator Assembly
14	21-246000	DCS Push Rod
15	21-246500	DCS Actuator
16	21-247500	Roller Arm Adjuster
17	21-248300	Chain Rod Guide



**Handed**  
☒ Yes ☐ No  
 If part is handed, you must specify Right or Left Hand.





# Interlocks

**21-240300**

**QIM interlock**

## Where Used

COURION "Q" Series Manual Freight Doors with Retiring Cam.  
Also Available: QIM - stainless - (# 21-240300S) and QIME - hazardous locations - (#21-240379)

## Features and Notes

NEMA 4, 12 and 13 standard. NEMA 7 and 9 available.

UL Listed and CSA approved. Tested to EN 81-1 and BS 5655-1 standards. Electrical Rating: Safety Contacts - 300 VAC, 2A and Zone Contacts - 300 VAC, 10A

Includes Courion Mounting Hardware Kit 94-000130Q

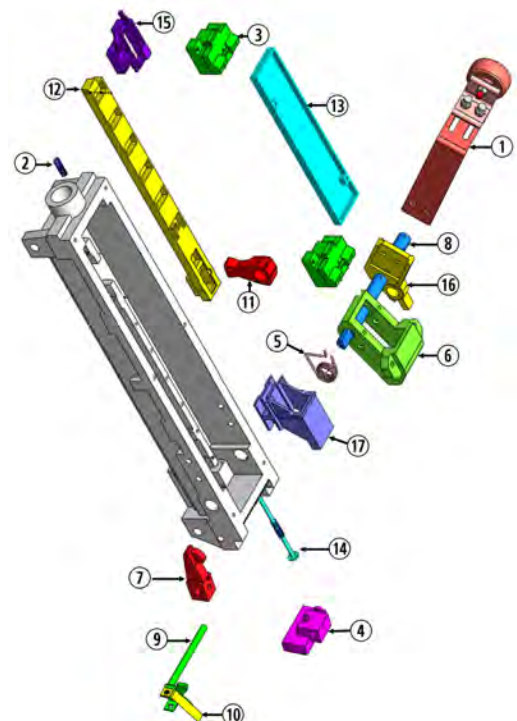
## Sub Assemblies

(For additional details - see pages that follow)

Item #	Part #	Part Description
1	04-000510	Roller Arm Assembly - Short
2	04-224000	Shuttle Spring
3	07-220000	Universal Modular Contact - UMC
4	21-242000	DCS Lifter
5	21-242200	Redundant Spring
6	21-242500	Interlock Latch
7	21-242700	Upper Panel Lock
8	21-243000	Pivot Shaft
9	21-243300	Cam Follower
10	21-243400	Assist Spring
11	21-243500	Interlock Arm
12	21-245000	Actuator Assembly
13	21-245700	Zone Filler
14	21-246000	DCS Push Rod
15	21-246500	DCS Actuator
16	21-247500	Roller Arm Adjuster
17	21-248300	Chain Rod Guide



**Handed**  
☒ Yes   ☐ No   If part is handed, you must specify Right or Left Hand.







# Interlocks

**21-240700**

**QLC Lock and Contact**

## Where Used

COURION "Q" Series Manual Freight Doors with Fixed or Stationary Cam. Also Available: QLC - stainless - (#21-240700S) and QLCE - hazardous location - (#21-240779)

## Features and Notes

NEMA 4, 12 and 13 standard. NEMA 7 and 9 available.

UL Listed and CSA approved. Tested to EN 81-1 and BS 5655-1 standards. Electrical Rating: Safety Contacts - 300 VAC, 2A and Zone Contacts - 300 VAC, 10A

Includes Courion Mounting Hardware Kit 94-000130Q

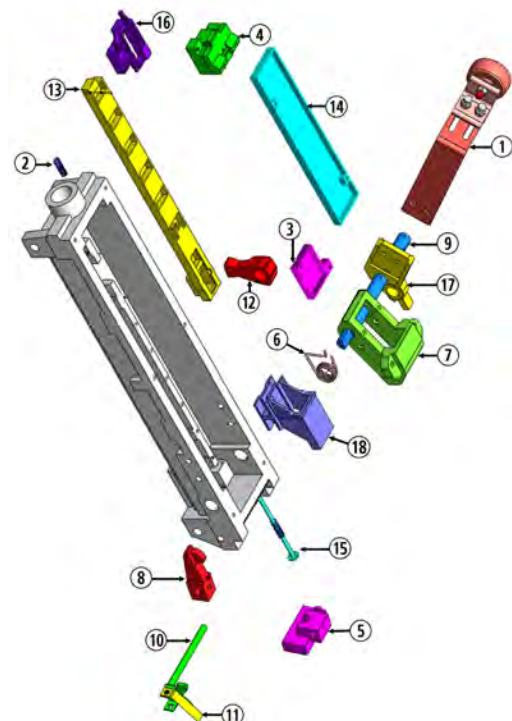
## Sub Assemblies

(For additional details - see pages that follow)

Item #	Part #	Part Description
1	04-000510	Roller Arm Assembly - Short
2	04-224000	Shuttle Spring
3	07-215000	Zone Filler Plate
4	07-220000	Universal Modular Contact - UMC
5	21-242000	DCS Lifter
6	21-242200	Redundant Spring
7	21-242500	Interlock Latch
8	21-242700	Upper Panel Lock
9	21-243000	Pivot Shaft
10	21-243300	Cam Follower
11	21-243400	Assist Spring
12	21-243500	Interlock Arm
13	21-245000	Actuator Assembly
14	21-245700	Zone Filler
15	21-246000	DCS Push Rod
16	21-246500	DCS Actuator
17	21-247500	Roller Arm Adjuster



**Handed**  
☒ Yes ☐ No  
 If part is handed, you must specify Right or Left Hand.



(314) 533-5700 - (800) 533-5760 - sales@couriondoors.com - www.couriondoors.com

## Q Series

### 04-224000

#### Where Used

COURION "Q" Series Interlocks

### Shuttle Spring



#### Features and Notes

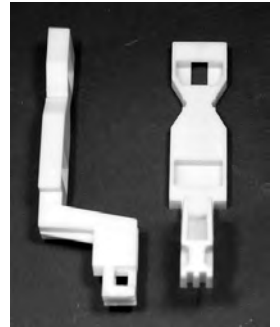
Handed ☐ Yes ☒ No

### 07-214000

#### Where Used

COURION Q Style Gate Contact

### Switch Actuator



#### Features and Notes

Handed ☐ Yes ☒ No

### 07-214500

#### Where Used

COURION "Q" Series Interlock Actuator Assembly

### Spring



#### Features and Notes

Handed ☐ Yes ☒ No

### 07-215000

#### Where Used

COURION "Q" Series Interlocks

### Zone Filler Plate



#### Features and Notes

Handed ☐ Yes ☒ No

## Q Series

### 07-220000

### Universal Modular Contact - UMC

#### Where Used

COURION "Q" Series Interlocks and "Q" Series Gate Contact



#### Features and Notes

Handed ☐ Yes ☒ No

### 21-242000

### DCS Lifter

#### Where Used

COURION "Q" Series Interlocks



#### Features and Notes

Available in Stainless

Include (1) 1/8 x 1/2" Roll Pin

Handed ☐ Yes ☒ No

### 21-242200

### Redundant Spring

#### Where Used

COURION "Q" Series Interlocks and Side Opposite Latches



#### Features and Notes

Handed ☐ Yes ☒ No

### 21-242500

### Interlock Latch

#### Where Used

COURION "Q" Series Interlocks and Side Opposite Latches



#### Features and Notes

Include (1) 3/16 x 1-1/4" Roll Pin, (1) 3/8-18 x 1-1/4" Hex Head Cap Screw, (1) 3/8 Split Lock Washer, and (1) Grip Washer (#21-247800)

Handed ☐ Yes ☒ No

## Q Series

### 21-242700

### Upper Panel Lock

#### Where Used

COURION "Q" Series Interlocks and Side Opposite Latches

#### Features and Notes

Include (1) 5/16 x 1/4" Socket Head Set Screw



Handed ☐ Yes ☒ No

### 21-243000

### Pivot Shaft

#### Where Used

COURION "Q" Series Interlocks and Side Opposite Latches

#### Features and Notes

Available in Stainless.

Include (1) 3/16 x 1" Roll Pin



Handed ☐ Yes ☒ No

### 21-243150

### Cam Follower Replacement Kit

#### Where Used

COURION "Q" Series Interlocks

#### Features and Notes

Includes DCS Lifter, CAM Follower, and Assist Spring.



Handed ☐ Yes ☒ No

### 21-243200

### Cam Follower Assembly

#### Where Used

COURION "Q" Series Interlocks

#### Features and Notes

When replacing, purchase the Cam Follower Replacement Kit #21-243150.



Handed ☐ Yes ☒ No



## Q Series

### 21-243300

### Cam Follower

#### Where Used

COURION "Q" Series Interlocks



#### Features and Notes

Sell 21-243150

Handed ☐ Yes ☒ No

### 21-243400

### Assist Spring

#### Where Used

COURION "Q" Series Interlocks



#### Features and Notes

Include (1) #10-24 x 1/2" Carriage Bolt, (1) #10 Lock Washer, and (1) #10-24 Hex Nut.

Handed ☐ Yes ☒ No

### 21-243500

### Interlock Arm

#### Where Used

COURION "Q" Series Interlocks



#### Features and Notes

Include (1) 3/16 x 1" Roll Pin.

Handed ☐ Yes ☒ No

### 21-245000

### Actuator Assembly

#### Where Used

COURION "Q" Series Interlocks



#### Features and Notes

Handed ☐ Yes ☒ No

## Q Series

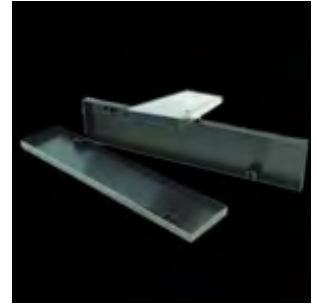
### 21-245700

### Zone Filler

#### Where Used

COURION "Q" Series Interlocks

#### Features and Notes



Handed ☐ Yes ☒ No

### 21-246000

### DCS Push Rod

#### Where Used

COURION "Q" Series Interlocks

#### Features and Notes

Include (1) Shuttle Spring (#04-224000), (1) Rod Gasket (#21-247300), and (1) #10 Flat Washer.



Handed ☐ Yes ☒ No

### 21-246500

### DCS Actuator

#### Where Used

COURION "Q" Series Interlocks

#### Features and Notes



Handed ☐ Yes ☒ No

### 21-246700

### Wire Shield

#### Where Used

COURION "Q" Series Interlocks

#### Features and Notes



Handed ☐ Yes ☒ No

## Q Series

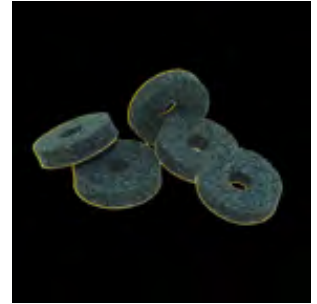
### 21-247300

### Rod Gasket

#### Where Used

COURION "Q" Series Interlocks

#### Features and Notes



Handed ☐ Yes ☒ No

### 21-247500

### Roller Arm Adjuster

#### Where Used

COURION "Q" Series Interlocks and Side Opposite Latches

#### Features and Notes

Available in Stainless



Handed ☐ Yes ☒ No

### 21-247800

### Grip Washer

#### Where Used

COURION "Q" Series Interlocks and Side Opposite Latches

#### Features and Notes

Available in Stainless



Handed ☐ Yes ☒ No

### 21-248000

### Interlock Gasket

#### Where Used

COURION "Q" Series Interlocks

#### Features and Notes



Handed ☐ Yes ☒ No

## Q Series

### 21-248300

### Chain Rod Guide

#### Where Used

COURION "Q" Series Interlocks and Side Opposite Latches

#### Features and Notes

Include (1) Guide Spacer (#21-248500), (2) 1/4 Lock Washers, and (2) 1/4-20 x 2" Socket Head Screws.



Handed ☐ Yes ☒ No

### 21-248500

### Guide Spacer

#### Where Used

COURION "Q" Series Interlocks and Side Opposite Latches

#### Features and Notes

Available in Stainless



Handed ☐ Yes ☒ No

### 21-249000

### Interlock Cover

#### Where Used

COURION "Q" Series Interlocks

#### Features and Notes

Available in Stainless

Include (1) Foam Gasket (#21-248000), and (24) #10-32 x 1/2 Captive Screws (#90-202500).



Handed ☐ Yes ☒ No

### 21-249079

### Interlock Cover - Hazardous Location

#### Where Used

COURION "Q" Series Interlocks

#### Features and Notes

Include (10) 1/4-20 x 7/8" Hex Head Screws, and (10) 1/4 Split Lock Washers



Handed ☐ Yes ☒ No

## Q Series

### 94-000130Q

#### Where Used

COURION "Q" Series Interlocks

### Q Interlock Hardware Kit

<b>Q INTERLOCK HARDWARE KIT</b> <b>94-000130Q</b>	
(3) 3/8-16 x 4-1/2 HHCS	
(3) 3/8 LW washers	
(3) 3/8-16 hex nuts	
(1) Temporary Hold Open Clip (#21-248800) & Instructions	
COURION 1-800-533-5760 OR 314-533-5700	

#### Features and Notes

Handed ☐ Yes ☒ No

### 94-000230Q

#### Where Used

COURION Q Style Interlocks

### Q Interlock Roller Arm Hardware Kit

<b>INTERLOCK ROLLER ARM HARDWARE KIT</b> <b>94-000230Q</b>	
(3) 5/16-18 x 3/4 Hex Head Cap Screw (HHCS)	
(3) 5/16 Split Lock Washers (LW)	
COURION 1-800-533-5760 OR 314-533-5700	

#### Features and Notes

Handed ☐ Yes ☒ No



# Interlocks

04-399929

PAE interlock

## Where Used

COURION "P" Style power operated freight doors with retiring cam and emergency unlocking devices.

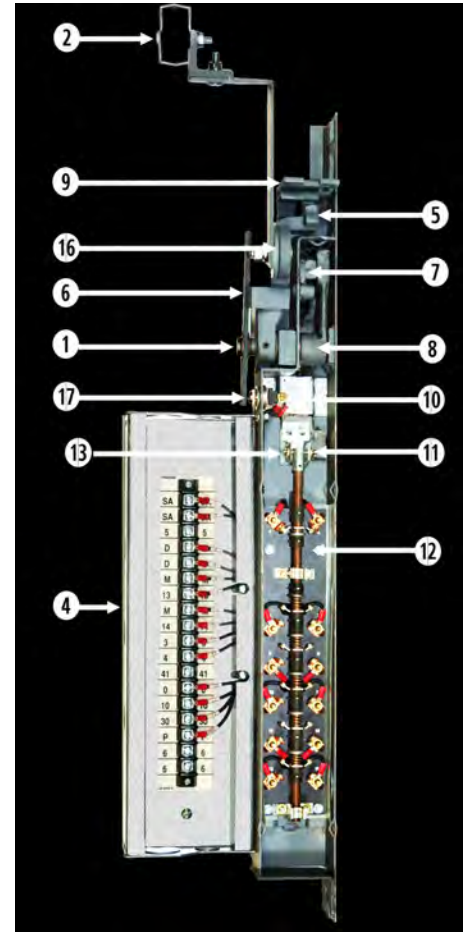
Also Available:

PAE Interlock with extended roller arm  
PAE Interlock with auto sta-set switch

## Sub Assemblies

(For additional details - see pages that follow)

Item #	Part #	Part Description
1	04-000100	PA Interlock Shaft
2	04-000501	Roller Arm
3	04-009900	Latch Lever Spring
4	04-010503	Junction Box
5	04-011700	Interlock Lever
6	04-011800	Safety Access Lever
7	04-015600	Cam & Pin
8	04-015700	Lever
9	04-041601	Lock Bar Guide
10	04-300101	Keeper
11	04-355200	Adjustable Bail Pin
12	04-359600	PA Contact Assembly
13	04-601002	Adjustable Bail
14	04-637600	Interlock Slide
15	04-689901	Switch Assembly
16	08-032900	Ratchet Washer
17	90-908400	Toggle Switch



**Handed**  
☒ Yes ☐ No If part is handed, you must specify Right or Left Hand.

## Features and Notes

Label: UL and CSA  
Rating: NEMA 1

Includes mounting hardware kit 94-000130





# Interlocks

**04-399988**

**PA interlock**

## Where Used

COURION "P" Series Power Freight Doors with retiring cam.

Also Available:

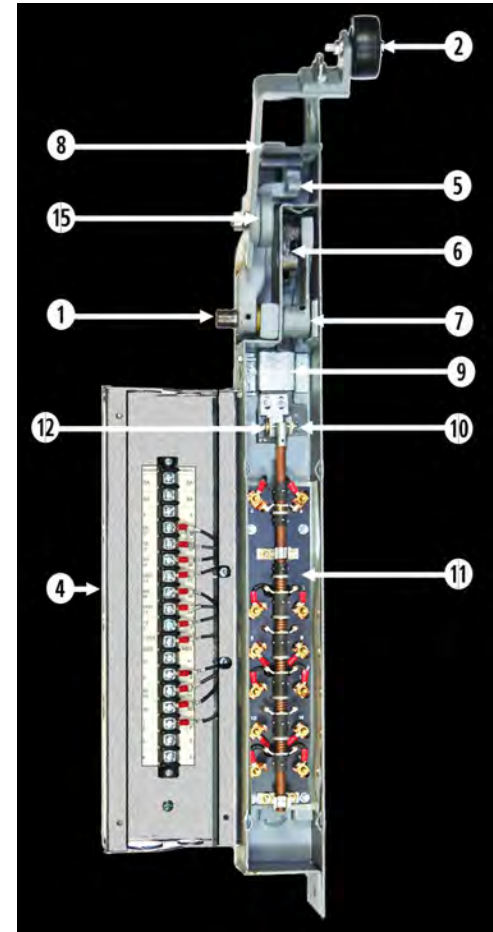
PA Interlock - with extended shaft

PA Interlock - with auto-sta set switch

## Sub Assemblies

(For additional details - see pages that follow)

Item #	Part #	Part Description
1	04-000100	PA Interlock Shaft
2	04-000501	Roller Arm
3	04-009900	Latch Lever Spring
4	04-010503	Junction Box
5	04-011700	Interlock Lever
6	04-015600	Cam & Pin
7	04-015700	Lever
8	04-041601	Lock Bar Guide
9	04-300101	Keeper
10	04-355200	Adjustable Bail Pin
11	04-359600	PA Contact Assembly
12	04-601002	Adjustable Bail
13	04-637600	Interlock Slide
14	04-689901	Switch Assembly
15	08-032900	Ratchet Washer



**Handed**

☉ Yes    ○ No

If part is handed, you must specify Right or Left Hand.

## Features and Notes

Label: UL and CSA

Rating: NEMA 1

Includes mounting hardware kit 94-000130

## P Series

### 04-000100

### PA Interlock Shaft

#### Where Used

COURION "P" Series Interlocks

#### Features and Notes

Include (1) 3/16 x 1-1/4" Roll Pin, and (1) 3/16 x 1" Roll Pin



Handed ☐ Yes ☒ No

### 04-009900

### Latch Lever Spring

#### Where Used

COURION "P" and "X" Series Interlocks

#### Features and Notes

Available in stainless



Handed ☐ Yes ☒ No

### 04-010502

### Junction Box Cover

#### Where Used

COURION "P" Series Interlocks

#### Features and Notes

Include (4) #10-32 x 5/8" Pan Head Machine Screws



Handed ☐ Yes ☒ No

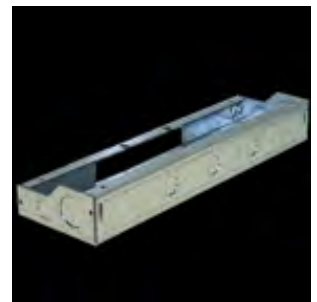
### 04-010503

### Junction Box

#### Where Used

COURION "P" Series Interlocks

#### Features and Notes



Handed ☐ Yes ☒ No

## P Series

### 04-011700

### Interlock Lever

#### Where Used

COURION "P" Series Interlocks

#### Features and Notes

Include (1) 3/16 x 1" Roll Pin



Handed ☒ Yes ☐ No

### 04-011800

### Safety Access Lever

#### Where Used

COURION "P" Series Interlocks

#### Features and Notes

Include (1) Truarc Retaining Rings



Handed ☒ Yes ☐ No

### 04-015600

### Cam & Pin

#### Where Used

COURION "P" Series Interlocks

#### Features and Notes



Handed ☒ Yes ☐ No

### 04-015700

### Lever

#### Where Used

COURION "P" Series Interlocks

#### Features and Notes

Include (1) 3/16 x 1-1/4" Roll Pin



Handed ☐ Yes ☒ No

## P Series

### 04-041601

#### Where Used

COURION "P" and "X" Series Interlocks

### Lock Bar Guide



#### Features and Notes

Available in Stainless

Include (2) 1/4-20 x 3/8" Whiz Lock Screws

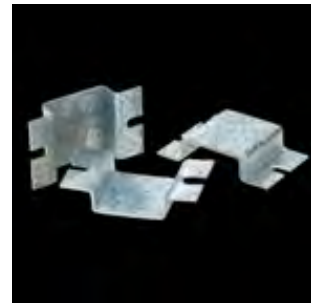
Handed ☐ Yes ☒ No

### 04-300101

#### Where Used

COURION "P" Series Interlocks

### Keeper



#### Features and Notes

Include (2) #8 x 1/2" Machine Screws

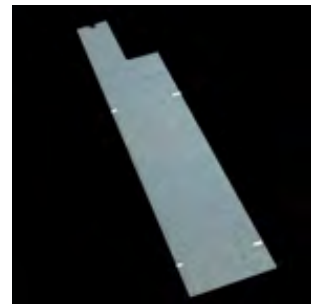
Handed ☐ Yes ☒ No

### 04-300602

#### Where Used

COURION "P" Series Interlocks

### Cover Plate



#### Features and Notes

Include (5) #8-32 x 5/8" Pan Head Machine Screws

Handed ☐ Yes ☒ No

### 04-301200

#### Where Used

COURION "P" Series Interlocks

### Insulator



#### Features and Notes

2-3/4" x 18"

Handed ☐ Yes ☒ No

## P Series

### 04-326100

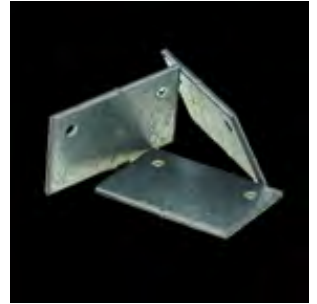
### EUD filler

#### Where Used

COURION "P" Series Interlocks

#### Features and Notes

Include (2) #8-32 x 1/2" Machine Screws



Handed ☐ Yes ☒ No

### 04-355200

### Adjustable Bail Pin

#### Where Used

Used to connect a Movable Contact to a Solenoid on the Model D and MIPROM Door Controls, and P Series Interlocks

#### Features and Notes

Include (2) 1/16 x 3/8" Cotter Pins



Handed ☐ Yes ☒ No

### 04-601002

### Adjustable Bail

#### Where Used

COURION "P" Series Interlocks

#### Features and Notes

Include (2) #8-32 x 1/2" Machine Screws, (1) Bail Pin (Part #: 04-355200), and (2) 1/16 x 3/8" Cotter Pins



Handed ☐ Yes ☒ No

### 04-637600

### Interlock Slide

#### Where Used

COURION "P" Series Interlocks

#### Features and Notes



Handed ☒ Yes ☐ No

## P Series

### 04-689901

#### Switch Assembly

##### Where Used

COURION "P" Series Interlocks (California Only)

##### Features and Notes



Handed ☒ Yes ☐ No

### 90-034005

#### Terminal Marker

##### Where Used

COURION "P" Series Interlocks

##### Features and Notes



Handed ☐ Yes ☒ No

### 90-876300

#### Microswitch

##### Where Used

COURION "P" Series Interlocks Plunger Switch (California only).

##### Features and Notes



Handed ☐ Yes ☒ No

### 90-908400

#### Toggle Switch

##### Where Used

COURION "P" Series Interlocks

##### Features and Notes



Handed ☐ Yes ☒ No



## P Series

### 94-000130

#### Where Used

COURION "P" Series Interlocks

### Interlock Hardware Kit #130

#### PA INTERLOCK HARDWARE KIT Courion Part #: 94-000130

- (2) 3/8-16 x 1-1/2" Round Head Machine Screw
- (2) 3/8 Flat Washer
- (2) 3/8 Split Lock Washer
- (2) 3/8-16 Hex Nut

COURION 1-800-533-5760 OR 314-533-5700

#### Features and Notes

Handed ☐ Yes ☒ No

### 94-000134

#### Where Used

COURION P Style Freight Doors

### Interlock Mounting Plate Hardware Kit

#### Interlock Mounting Plate Courion Part #: 94-000134

- (2) 1/4-13 x 1" Hex head machine screw
- (1) 1/4-13 x 1" Flat head machine screw
- (3) 1/2" Split lock washer
- (3) 1/2-13 Hex nuts

COURION 1-800-533-5760 OR 314-533-5700

#### Features and Notes

Handed ☐ Yes ☒ No

### 94-000230

#### Where Used

COURION P Style Interlocks

### Interlock Roller Arm Hardware Kit

#### INTERLOCK ROLLER ARM HARDWARE KIT 94-000230

- (1) Ratchet Washer (Courion Part #: 08-032900)
- (1) 3/8-16 x 1-1/4" Plow bolt
- (1) 3/8" Flat Washer (FW)
- (1) 3/8" Split Lock Washer (LW)
- (1) 3/8-16 Hex nut

COURION 1-800-533-5760 OR 314-533-5700

#### Features and Notes

Handed ☐ Yes ☒ No



# Interlocks

**04-359600**

## PA Contact Assembly

### Where Used

COURION "P" Series Interlocks

See the Xmas Tree Contacts Section under Controls for additional information regarding sub assemblies and parts.

### Features and Notes

Include: (2) Contact Insulators (Part #: 04-301202), (4) #8-32 x 1/2" Round Head Machine Screws, and (4) #8 split lock washers.

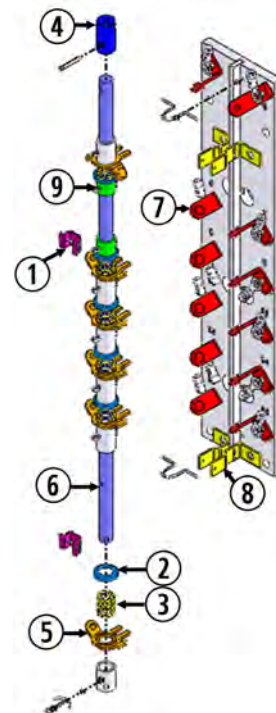
### Sub Assemblies

(For additional details - see pages that follow)

Item #	Part #	Part Description
1	01-033001	Rod Guide Retainer
2	01-033100	Spring Cup Washer
3	01-037400	Compression Spring
4	01-051801	Coupling
5	04-300304	Movable Butterfly Contact
6	04-301001	Phenolic Canvas Rod
7	04-355300	Stationary Contact
8	04-355400	Rod Guide Bracket
9	90-047001	Bakelite Sleeve - 3/8" Long



**Handed**  
☐ Yes ☒ No  
 If part is handed, you must specify Right or Left Hand.



## P Series

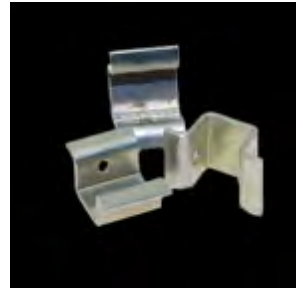
**01-033001**

### Rod Guide Retainer

**Where Used**

Movable Contacts (a/k/a Xmas Tree Contacts)

**Features and Notes**



Handed ☐ Yes ☒ No

**01-033100**

### Spring Cup Washer

**Where Used**

Movable Contacts (aka Xmas Tree Contacts)

**Features and Notes**



Handed ☐ Yes ☒ No

**01-037400**

### Compression Spring

**Where Used**

Movable Contacts (aka Xmas Tree Contacts)

**Features and Notes**



Handed ☐ Yes ☒ No

**01-051801**

### Coupling

**Where Used**

Movable Contacts (aka Xmas Tree Contacts)

**Features and Notes**



Handed ☐ Yes ☒ No

## P Series

### 04-300304

### Movable Butterfly Contact

#### Where Used

Movable Contacts (aka Xmas Tree Contacts)

#### Features and Notes



Handed ☐ Yes ☒ No

### 04-300900

### PA Contact Base

#### Where Used

Movable Contacts (a/k/a Xmas Tree Contacts)

#### Features and Notes



Handed ☐ Yes ☒ No

### 04-355300

### Stationary Contact

#### Where Used

Movable Contacts (a/k/a Xmas Tree Contacts)

#### Features and Notes

Include (1) 10-24 Brass Hex Nut, and (1) #10 copper cup washer.



Handed ☐ Yes ☒ No

### 04-355400

### Rod Guide Bracket

#### Where Used

Movable Contacts (a/k/a Xmas Tree Contacts)

#### Features and Notes

Include: (1) 10-24 Hex Nut



Handed ☐ Yes ☒ No

## P Series

### 90-047001

### Bakelite Sleeve - 3/8" Long

#### Where Used

Movable Contacts (aka Xmas Tree Contacts)



#### Features and Notes

Include: (1) 1/16 x 5/8" Cotter Pin.

Handed ☐ Yes ☒ No

### 90-047002

### Bakelite Sleeve - 9/16" Long

#### Where Used

Movable Contacts (aka Xmas Tree Contacts)



#### Features and Notes

Include: (1) 1/16 x 5/8" Cotter Pin.

Handed ☐ Yes ☒ No

### 90-047003

### Bakelite Sleeve - 3/4" Long

#### Where Used

Movable Contacts (aka Xmas Tree Contacts)



#### Features and Notes

Include: (1) 1/16 x 5/8" Cotter Pin.

Handed ☐ Yes ☒ No

## Lock Bars and Auto Latches

### 04-000600

#### Lock Bar

##### Where Used

COURION "P" Style power operated freight doors with Lock Bars

Lock Bars and Lock Bar Guides are job specific. Please provide COURION JOB NUMBER, JOB NAME, or JOB LOCATION when ordering.

##### Features and Notes

Available in Stainless.

Include a new Lock Bar Bolt (Part #: 08-004204 or 08-004206)



Handed ☐ Yes ☒ No

### 04-000700

#### Lock Bar Guide

##### Where Used

COURION "P" Style power operated freight doors with Lock Bars

Lock Bars and Lock Bar Guides are job specific. Please provide COURION JOB NUMBER, JOB NAME, or JOB LOCATION when ordering.

##### Features and Notes

Available in Stainless.

Include Lock Bar Guide Hardware Kit #140 (Part #: 94-000140)



Handed ☐ Yes ☒ No

### 08-004204

#### Lock Bar Bolt

##### Where Used

COURION "P" Style power operated freight doors with lock bars.

##### Features and Notes

Available in Stainless



Handed ☐ Yes ☒ No

### 08-004206

#### Lock Bar Bolt

##### Where Used

COURION "P" Style power operated freight doors with Lock Bars.

##### Features and Notes

Available in Stainless



Handed ☐ Yes ☒ No



## Lock Bars and Auto Latches

### 08-004208

### Lock Bar Bolt

#### Where Used

COURION Power Operated Freight Doors with P Series Interlocks and Lock Bars

#### Features and Notes



Handed ☐ Yes ☒ No

### 08-004209

### Lock Bar Bolt

#### Where Used

COURION Power Operated Freight Doors with P Series Interlocks and Lock Bars

#### Features and Notes



Handed ☐ Yes ☒ No

### 09-802408

### Auto Latch - Regular

#### Where Used

COURION "P" Style power operated freight doors (Regular) with lock bars.

#### Features and Notes

Auto Latch Mounting Plate measures 1-13/16" x 9"



Handed ☒ Yes ☐ No

### 09-802411

### Auto Latch - Pass

#### Where Used

COURION "P" Style power operated freight doors (Regular Pass and Pass) with Lock Bars.

#### Features and Notes

Auto Latch Mounting Plate measures 3-3/4" x 10-1/4"



Handed ☒ Yes ☐ No

## Lock Bars and Auto Latches

### 09-920100

#### Where Used

COURION "P" Style Side Opposite Latches

### Latch Lock Bar



#### Features and Notes

(3/8" arm - 1-1/8" standoff)

Handed ☐ Yes ☒ No

### 09-920101

#### Where Used

COURION "P" Style Side Opposite Latches

### Latch Lock Bar



#### Features and Notes

(1/2" arm - 1-1/4" standoff)

Handed ☐ Yes ☒ No

### 09-920102

#### Where Used

COURION "P" Style Side Opposite Latches

### Latch Lock Bar



#### Features and Notes

(3/4" arm - 1-1/2" standoff)

Handed ☐ Yes ☒ No

### 94-000133

#### Where Used

COURION P Style Freight Doors

### Auto Latch Hardware Kit



#### Features and Notes

Handed ☐ Yes ☒ No

## Lock Bars and Auto Latches

**94-000140**

**Where Used**

COURION P Style Freight Doors

### Lock Bar & Auto Latch hardware kit

**LOCK BAR GUIDE**  
94-000140

(2) 5/16-18 x 1-1/4 Round Head Machine Screw (RHMS)  
(2) 5/16 Split Lock Washer (LW)  
(2) 5/16 Flat Washer (FW)  
(2) 5/16-18 Hex nut

COURION 1-800-533-5760 OR 314-533-5700

**Features and Notes**

Handed ☐ Yes ☒ No

**94-000141**

**Where Used**

COURION P Style Freight Doors

### Lock Bar Bracket Hardware Kit

**LOCK-BAR BRACKET HARDWARE KIT**  
94-000141

(3) 3/8-16 X 1" HEX HEAD CAP SCREW  
(3) 3/8-16 HEX NUT  
(3) 3/8" SPLIT LOCK WASHER

COURION (800) 533-5760 or (314) 533-5700

**Features and Notes**

Handed ☐ Yes ☒ No



# Interlocks

08-299200

D Interlock

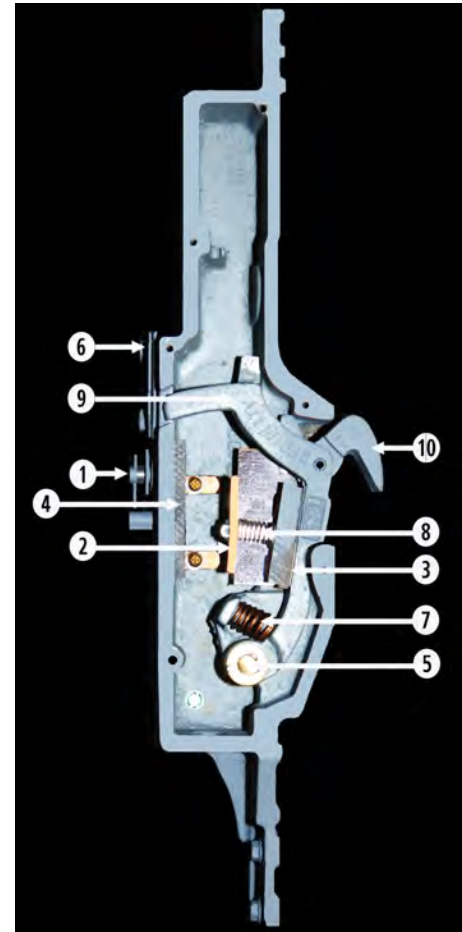
## Where Used

COURION manually operated freight doors with latch bars, and no fixed or retiring cam.

## Sub Assemblies

(For additional details - see pages that follow)

Item #	Part #	Part Description
1	08-000201	Interlock Stud
2	08-000400	Contact Bar
3	08-000600	Contact Bar Support
4	08-001000	Contact Base
5	08-001611	Contact Lever Stud
6	08-001700	Keeper
7	08-002500	Spring
8	08-002600	Spring
9	08-033200	Contact Lever
10	08-033300	Interlock Hook
11	08-402200	Interlock Cover



**Handed**  
☒ Yes ☐ No      If part is handed, you must specify Right or Left Hand.

## Features and Notes

Label: UL and CSA  
Rating: NEMA 1



# Interlocks

**08-399300**

## DL Lock and Contact

### Where Used

COURION manually operated freight doors with latch bars, and fixed or stationary cam.

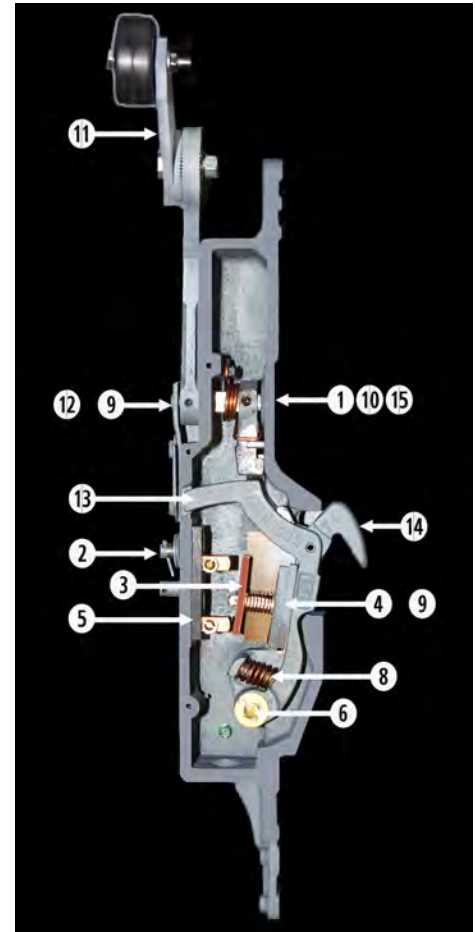
Also available:

DL Lock and Contact with extended shaft (Part #: 08-399301).

### Sub Assemblies

(For additional details - see pages that follow)

Item #	Part #	Part Description
1	08-000100	Shaft
2	08-000201	Interlock Stud
3	08-000400	Contact Bar
4	08-000600	Contact Bar Support
5	08-001000	Contact Base
6	08-001611	Contact Lever Stud
7	08-001700	Keeper
8	08-002500	Spring
9	08-002600	Spring
10	08-003100	Torsion Spring
11	08-003300	Interlock Roller Assembly Kit
12	08-004701	Release Lever
13	08-033200	Contact Lever
14	08-033300	Interlock Hook
15	08-333500	Locking Dog
16	08-402200	Interlock Cover



**Handed**  
☒ Yes ☐ No      If part is handed, you must specify Right or Left Hand.

### Features and Notes

Label: UL and CSA  
 Rating: NEMA 1



# Interlocks

**08-399700**

## DLW Lock and Contact

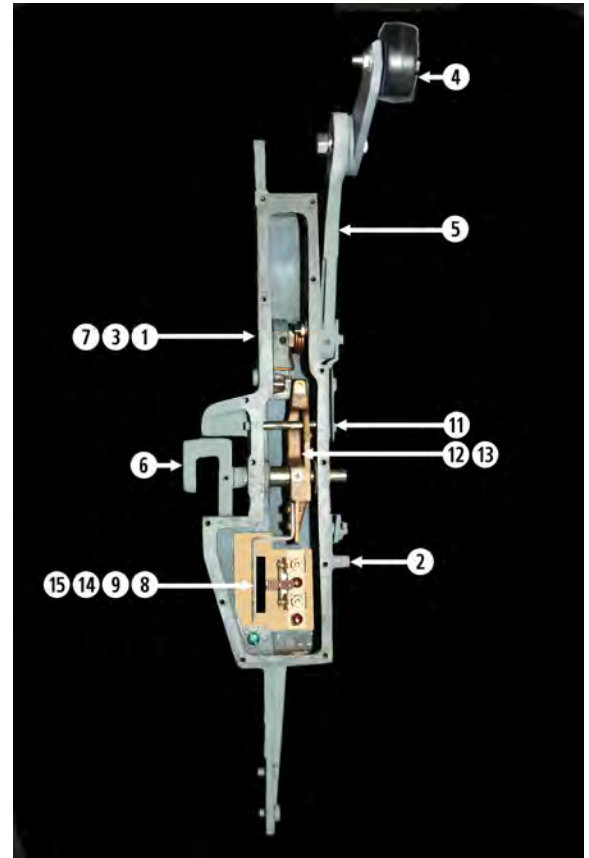
### Where Used

COURION manually operated freight doors with latch bars and stationary cam.

### Sub Assemblies

(For additional details - see pages that follow)

Item #	Part #	Part Description
1	08-000101	Shaft
2	08-000201	Interlock Stud
3	08-003100	Torsion Spring
4	08-003300	Interlock Roller Assembly Kit
5	08-004701	Release Lever
6	08-036100	Hook Assembly
7	08-333500	Locking Dog
8	08-401200	Support
9	08-401400	Spring
10	08-401601	Interlock Cover
11	08-401700	Stud
12	08-407900	Contact Lever
13	08-501200	Spring
14	08-750200	Movable Contact
15	08-750400	Stationary Contact



### Handed

☉ Yes ○ No

If part is handed, you must specify Right or Left Hand.

### Features and Notes

Water Resistant





# Interlocks

08-499800

DLSW Interlock

## Where Used

COURION manually operated freight doors with latch bars and retiring cam.

Also Available:

DLSW Interlock with extended shaft (Part #: 08-499801)

## Sub Assemblies

(For additional details - see pages that follow)

Item #	Part #	Part Description
1	08-000101	Shaft
2	08-000201	Interlock Stud
3	08-001002	Contact Post
4	08-003100	Torsion Spring
5	08-004701	Release Lever
6	08-036100	Hook Assembly
7	08-333500	Locking Dog
8	08-401200	Support
9	08-401400	Spring
10	08-401601	Interlock Cover
11	08-401700	Stud
12	08-407900	Contact Lever
13	08-501200	Spring
14	08-750200	Movable Contact
15	08-750400	Stationary Contact



## Handed

● Yes ○ No

If part is handed, you must specify Right or Left Hand.

## Features and Notes



# Interlocks

**08-499900**

**DLS Interlock**

## Where Used

COURION manually operated freight doors with latch bars and retiring cam.

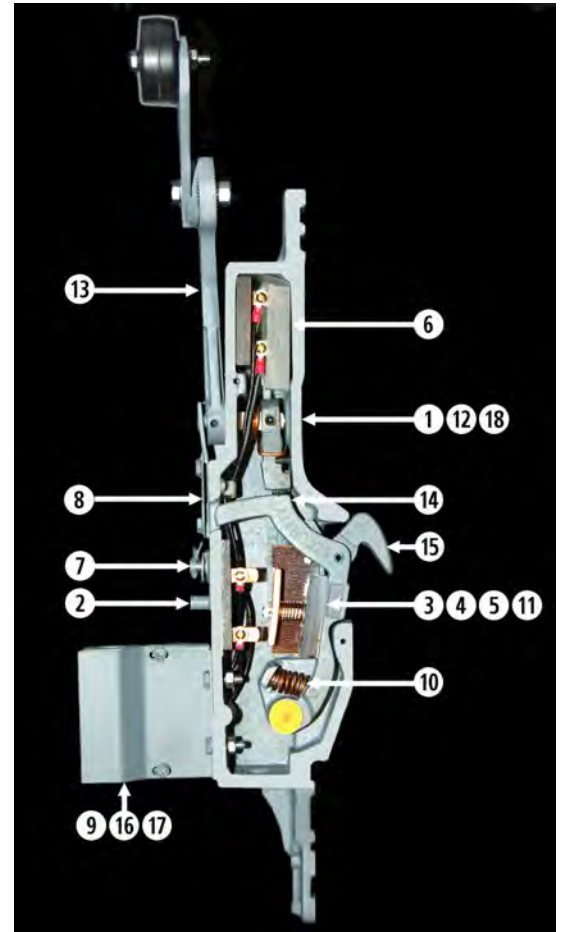
Also available:

DLS Interlock with extended shaft (Part #: 08-499901).

## Sub Assemblies

(For additional details - see pages that follow)

Item #	Part #	Part Description
1	08-000101	Shaft
2	08-000201	Interlock Stud
3	08-000400	Contact Bar
4	08-000600	Contact Bar Support
5	08-001000	Contact Base
6	08-001003	Contact Base Assembly
7	08-001611	Contact Lever Stud
8	08-001700	Keeper
9	08-002205	Terminal Block
10	08-002500	Spring
11	08-002600	Spring
12	08-003100	Torsion Spring
13	08-004701	Release Lever
14	08-033200	Contact Lever
15	08-033300	Interlock Hook
16	08-034101	Junction box
17	08-034102	Cover
18	08-333500	Locking Dog



**Handed**  
☒ Yes ☐ No      If part is handed, you must specify Right or Left Hand.

## Features and Notes

Label: UL and CSA  
 Rating: NEMA 1

## D Series

### 08-000100

#### Where Used

COURION "D" Series Interlocks

#### Shaft



#### Features and Notes

Include (2) 1/4-20 x 1/2" Set Screws

Handed ☐ Yes ☒ No

### 08-000101

#### Where Used

COURION "D" Series Interlocks

#### Shaft



#### Features and Notes

Include (2) 1/4-20 x 1/2" Set Screws

Handed ☐ Yes ☒ No

### 08-000201

#### Where Used

COURION "D" Series Interlocks

#### Interlock Stud



#### Features and Notes

Include (1) Brass Washer (Part #: 90-000300), and (2) 3/32 x 3/4" Cotter Pins

Handed ☐ Yes ☒ No

### 08-000400

#### Where Used

COURION "D" Series Interlocks

#### Contact Bar



#### Features and Notes

Include (1) 3/32 x 1/2" Cotter Pin

Handed ☐ Yes ☒ No

## D Series

### 08-000600

### Contact Bar Support

#### Where Used

COURION "D" Series Interlocks

#### Features and Notes

Include (1) Insulator (Part #: 08-002700), and (2) 10-32 x 1/2" Flat Head Machine Screws.



Handed ☐ Yes ☒ No

### 08-001000

### Contact Base

#### Where Used

COURION "D" Series Interlocks

#### Features and Notes

Include (1) Insulator (Part #: 08-002800), (2) #8-32 x 3/8" Round Head Machine Screws, and (2) #8 Shakeproof washers.



Handed ☐ Yes ☒ No

### 08-001002

### Contact Post

#### Where Used

COURION "D" Series Interlocks

#### Features and Notes

Include (3) #8-32 x 3/8" Brass Flat Head Machine Screws



Handed ☒ Yes ☐ No

### 08-001003

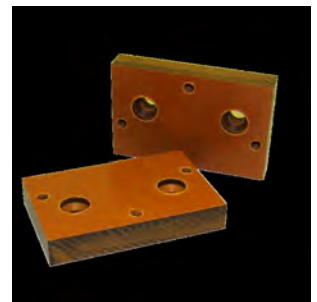
### Contact Base Assembly

#### Where Used

COURION "D" Series Interlocks

#### Features and Notes

Include (1) Insulator (#08-401905), (3) #8-32 x 3/8" Flat Head Machine Screws, and (3) #8-32 x 1/4" Round Head Machine Screws.



Handed ☐ Yes ☒ No

## D Series

### 08-001611

#### Where Used

COURION "D" Series Interlocks

### Contact Lever Stud



#### Features and Notes

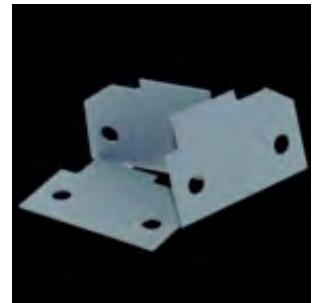
Handed ☐ Yes ☒ No

### 08-001700

#### Where Used

COURION "D" Series Interlocks

### Keeper



#### Features and Notes

Include (2) 1/4-20 x 1/2" Hex Head Machine Screws.

Handed ☐ Yes ☒ No

### 08-001800

#### Where Used

COURION "D" Series Interlocks

### Shaft Support



#### Features and Notes

Handed ☐ Yes ☒ No

### 08-001802

#### Where Used

COURION "D" Series Interlocks

### Shaft Support



#### Features and Notes

Include (2) 1/4-20 x 1/2" Hex Head Machine Screws and (2) 1/4" Split Lock Washers

Handed ☒ Yes ☐ No

## D Series

### 08-002205

#### Where Used

COURION "D" Series Interlocks

### Terminal Block



#### Features and Notes

Handed ☐ Yes ☒ No

### 08-002206

#### Where Used

COURION "D" Series Interlocks

### Insulator



#### Features and Notes

Handed ☐ Yes ☒ No

### 08-002300

#### Where Used

COURION "D" Series Interlocks

### Insulator



#### Features and Notes

Handed ☐ Yes ☒ No

### 08-002500

#### Where Used

COURION "D" Series Interlocks

### Spring



#### Features and Notes

Handed ☐ Yes ☒ No

## D Series

**08-002700**

Insulator

**Where Used**

COURION "D" Series Interlocks



**Features and Notes**

Handed ☐ Yes ☒ No

**08-002800**

Insulator

**Where Used**

COURION "D" Series Interlocks



**Features and Notes**

Handed ☐ Yes ☒ No

**08-003100**

Torsion Spring

**Where Used**

COURION "D" Series Interlocks



**Features and Notes**

Include (2) 1/4-20 x 1/2" Set Screws

Handed ☒ Yes ☐ No

**08-004400**

Interlock Washer

**Where Used**

COURION "X" Series Interlocks



**Features and Notes**

Handed ☐ Yes ☒ No



## D Series

### 08-004701

### Release Lever

#### Where Used

COURION "D" Series Interlocks

#### Features and Notes

Include (1) 1/4-20 x 1/2" Set Screws



Handed ☐ Yes ☒ No

### 08-004900

### Spacer

#### Where Used

COURION "D" Series Interlocks

#### Features and Notes



Handed ☐ Yes ☒ No

### 08-005000

### Keeper

#### Where Used

COURION "D" Series Interlocks

#### Features and Notes

Include (2) 1/4-20 x 1/2" Hex Head Machine Screws and (2) 1/4" Split Lock Washers



Handed ☐ Yes ☒ No

### 08-005200

### Shaft Bearing Washer

#### Where Used

COURION "D" Series Interlocks

#### Features and Notes

Stainless



Handed ☐ Yes ☒ No

## D Series

### 08-033200

### Contact Lever

#### Where Used

COURION "D" Series Interlocks

#### Features and Notes

Include (1) Brass Washer (Part #: 90-000300), (1) 1/4 x 3/4" Roll Pin, and (1) 3/32 x 3/4" Cotter Pin.



Handed ☒ Yes ☐ No

### 08-033300

### Interlock Hook

#### Where Used

COURION "D" Series Interlocks

#### Features and Notes

Include (1) 1/4 x 3/4" Roll Pin



Handed ☐ Yes ☒ No

### 08-034102

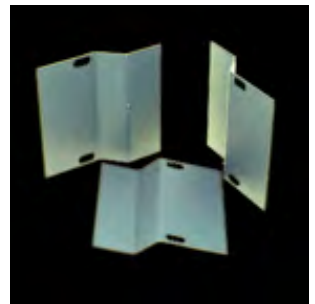
### Cover

#### Where Used

COURION "D" Series Interlocks

#### Features and Notes

Include (2) #8-32 x 3/8" Round Head Machine Screws.



Handed ☐ Yes ☒ No

### 08-036100

### Hook Assembly

#### Where Used

COURION "D" Series Interlocks

#### Features and Notes

Include (1) #10-32 x 1" Flat Head Machine Screw



Handed ☐ Yes ☒ No

## D Series

### 08-111100

### Bottom Contact Kit for D Interlocks

#### Where Used

COURION "D" Series Interlocks

#### Features and Notes

Includes: (2) Cup Washers (01-033100), (1) Contact Bar (#08-000400), (1) Contact Support (#08-000600), (2) Insulators (#08-002300 & #08-002700), (2) Springs (#08-002600 & #08-002500), (1) 1/4 x 3/4 Roll Pin, (2) 3/8" Tubular Rivets, (1) 3/32 x 1/2" cotter pin, (1) 3/16 flat washer, and (2) #10-32 x 1/2" Flat Head Machine Screws.



Handed ☐ Yes ☒ No

### 08-200100

### Filler

#### Where Used

COURION "D" Series Interlocks

#### Features and Notes

Include (2) 1/4-20 x 1/2 Hex Head Machine Screws.



Handed ☐ Yes ☒ No

### 08-333500

### Locking Dog

#### Where Used

COURION "D" Series Interlocks

#### Features and Notes

Include (1) 1/4-20 x 1/2" Set Screws



Handed ☒ Yes ☐ No

### 08-400800

### Insulator

#### Where Used

COURION "D" Series Interlocks

#### Features and Notes



Handed ☐ Yes ☒ No

## D Series

### 08-401100

### Movable Contact Bracket

#### Where Used

COURION "D" Series Interlocks

#### Features and Notes

Include (2) #8-32 x 1/2" Brass Round Head Machine Screws



Handed ☐ Yes ☒ No

### 08-401200

### Support

#### Where Used

COURION "D" Series Interlocks

#### Features and Notes

Include (1) Insulator (Part #: 08-400800), and (2) #8-32 x 1/4" Brass Flat Head Machine Screws.



Handed ☐ Yes ☒ No

### 08-401300

### Stationary Contact Mounting Angle

#### Where Used

COURION "D" Series Interlocks

#### Features and Notes

Include (2) #8-32 x 1/4" Brass Flat Head Machine Screws



Handed ☒ Yes ☐ No

### 08-401400

### Spring

#### Where Used

COURION "D" Series Interlocks

#### Features and Notes



Handed ☐ Yes ☒ No

## D Series

### 08-401601

### Interlock Cover

#### Where Used

COURION "D" Series Interlocks

#### Features and Notes

Include (13) #8-32 x 1/4" Round Head Machine Screws



Handed ☐ Yes ☒ No

### 08-401700

### Stud

#### Where Used

COURION "D" Series Interlocks

#### Features and Notes



Handed ☐ Yes ☒ No

### 08-401800

### Insulator

#### Where Used

COURION "D" Series Interlocks

#### Features and Notes



Handed ☐ Yes ☒ No

### 08-401904

### Interlock insulator

#### Where Used

COURION "D" Series Interlocks

#### Features and Notes



Handed ☐ Yes ☒ No

## D Series

### 08-401905

### Insulator

#### Where Used

COURION "D" Series Interlocks

#### Features and Notes

Handed ☒ Yes ☐ No

### 08-402000

### Insulator

#### Where Used

COURION "D" Series Interlocks



#### Features and Notes

Handed ☐ Yes ☒ No

### 08-402200

### Interlock Cover

#### Where Used

COURION "D" Series Interlocks

#### Features and Notes

Include (6) #8-32 x 1/4 Round Head Machine Screws, and (1) Cover Insulator (Part #: 08-402202).



Handed ☐ Yes ☒ No

### 08-402202

### Cover Insulator

#### Where Used

COURION "D" Series Interlocks

#### Features and Notes



Handed ☐ Yes ☒ No

## D Series

**08-402400**

**Where Used**

COURION "D" Series Interlocks

Gasket



**Features and Notes**

Handed ☐ Yes ☒ No

**08-407600**

**Where Used**

COURION "D" Series Interlocks

DLW Interlock Box



**Features and Notes**

Handed ☒ Yes ☐ No

**08-407900**

**Where Used**

COURION "D" Series Interlocks

Contact Lever



**Features and Notes**

Include (1) #10-32 x 1" Flat Head Machine Screw

Handed ☒ Yes ☐ No

**08-435100**

**Where Used**

COURION "D" Series Interlocks

DLS Interlock Box



**Features and Notes**

Handed ☒ Yes ☐ No

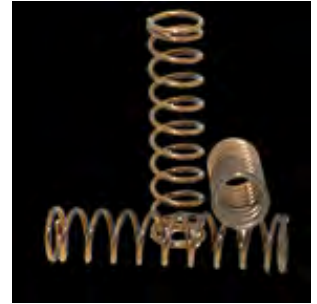
## D Series

**08-501200**

Spring

**Where Used**

COURION "D" Series Interlocks



**Features and Notes**

Handed ☐ Yes ☒ No

**08-603000**

Lock Bar Guide

**Where Used**

COURION D Series Interlocks

**Features and Notes**

Handed ☐ Yes ☒ No

**08-750200**

Movable Contact

**Where Used**

COURION "D" Series Interlocks



**Features and Notes**

Include (1) 1/16 x 1/2" Cotter Pin

Handed ☐ Yes ☒ No

**08-750400**

Stationary Contact

**Where Used**

COURION "D" Series Interlocks



**Features and Notes**

Include (2) #8-32 x 1/4" Brass Flat Head Machine Screws

Handed ☒ Yes ☐ No



## Safety Stop Bars

**08-000700**

**Where Used**

COURION Safety Stop Bars

Safety Stop Bar Link



**Features and Notes**

Handed ☐ Yes ☒ No

**08-000801**

**Where Used**

COURION Safety Stop Bars

Pivot Pin



**Features and Notes**

Handed ☐ Yes ☒ No

**08-001202**

**Where Used**

COURION Safety Stop Bars

Locating Bar



**Features and Notes**

Handed ☐ Yes ☒ No

**08-001203**

**Where Used**

COURION Safety Stop Bars

Locating Bar

**Features and Notes**

Handed ☐ Yes ☒ No

## Safety Stop Bars

### 08-001401

#### Where Used

COURION Safety Stop Bars

#### Filler



#### Features and Notes

Handed ☐ Yes ☒ No

### 08-033100

#### Where Used

COURION Safety Stop Bars

#### Safety Stop Bar Bracket



#### Features and Notes

Handed ☐ Yes ☒ No

### 08-089901

#### Where Used

COURION Power Operated Freight Doors with D Series Interlocks

#### Safety Stop Bar



#### Features and Notes

For Opening heights between 6'6" and 7'9"

Handed ☒ Yes ☐ No

### 08-089932

#### Where Used

COURION Power Operated Freight Doors with D Series Interlocks

#### Safety Stop Bar - Right Hand



#### Features and Notes

Opening height between 7'10" and 8'3"

Handed ☒ Yes ☐ No

## Safety Stop Bars

**08-089933**

Safety Stop Bar - Left Hand

**Where Used**

COURION Power Operated Freight Doors with D Series Interlocks

**Features and Notes**

Opening height between 7'10" and 8'3"



Handed ☒ Yes ☐ No



# Interlocks

08-699400

## XHE-1 Interlock

### Where Used

Manually operated Freight Doors with Lock Bars and Retiring Cams in a Hazardous Location.

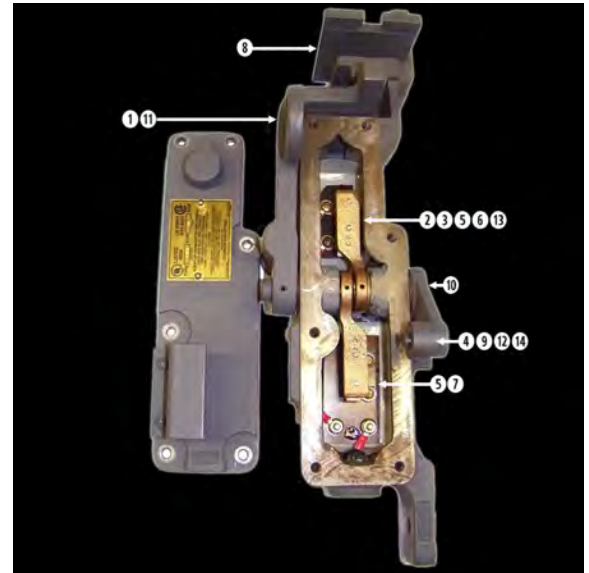
Also Available:

XHM-1 Interlock (NEMA 4X - Corrosive Locations) (Part #: 08-699401)

### Sub Assemblies

(For additional details - see pages that follow)

Item #	Part #	Part Description
1	04-009900	Latch Lever Spring
2	08-003600	Interlock Spring
3	08-016600	Contact Bar
4	08-500100	Roller
5	08-600200	Contact Bar Support
6	08-600300	Contact Post - Top Assembly
7	08-600402	Bottom Contact
8	08-600500	Lock Bar Slide
9	08-600700	Roller Pin
10	08-600901	Interlock Shaft
11	08-602400	Lock Bar Lever
12	08-602502	Roller Lever
13	08-602601	Contact Lever
14	08-700300	Spring



**Handed**  
☒ Yes   ☐ No   If part is handed, you must specify Right or Left Hand.

### Features and Notes

Label: UL and CSA

Rating: NEMA 7 and 9  
 Class I, Division 1 & 2, Groups C and D  
 Class II, Division 1 & 2, Groups E, F, and G



# Interlocks

08-699401

## XHM-1 Interlock

### Where Used

Manually operated Freight Doors with Lock Bars and Retiring Cam in a Corrosive Location.

### Sub Assemblies

(For additional details - see pages that follow)

Item #	Part #	Part Description
1	04-009900	Latch Lever Spring
2	08-003600	Interlock Spring
3	08-016600	Contact Bar
4	08-500100	Roller
5	08-600200	Contact Bar Support
6	08-600300	Contact Post - Top Assembly
7	08-600402	Bottom Contact
8	08-600500	Lock Bar Slide
9	08-600901	Interlock Shaft
10	08-602400	Lock Bar Lever
11	08-602502	Roller Lever
12	08-602601	Contact Lever
13	08-700300	Spring



**Handed**  
☒ Yes ☐ No      If part is handed, you must specify Right or Left Hand.

### Features and Notes

Label: UL and CSA

Rating: NEMA 2, 3, 4, 4X, and 12



# Interlocks

08-699500

## XHE-2 Interlock

### Where Used

Power operated Freight Doors with Lock Bars and Retiring Cams in a Hazardous Location.

Also Available:

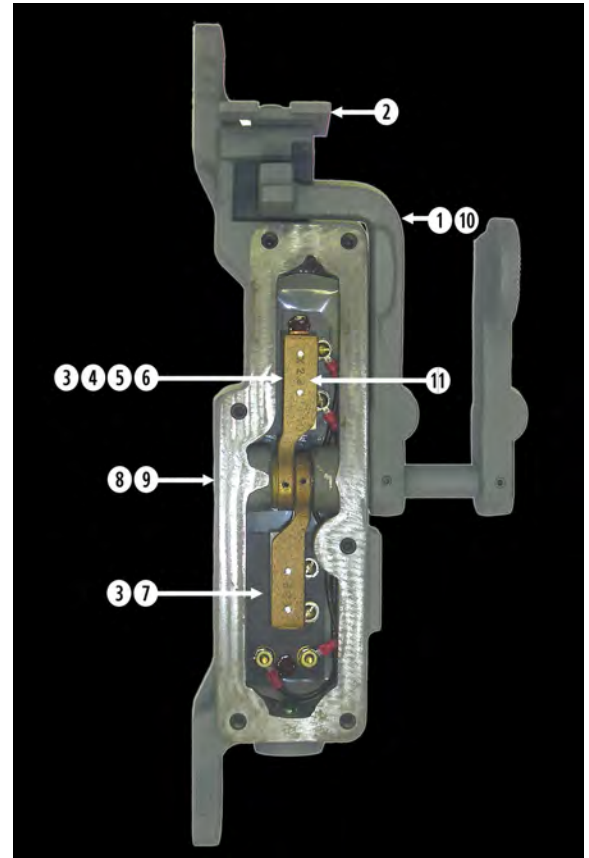
XHE-2 - with extended shaft

XHE-2 - with auto sta-set switch

### Sub Assemblies

(For additional details - see pages that follow)

Item #	Part #	Part Description
1	04-009900	Latch Lever Spring
2	04-041601	Lock Bar Guide
3	08-003600	Interlock Spring
4	08-016600	Contact Bar
5	08-600200	Contact Bar Support
6	08-600300	Contact Post - Top Assembly
7	08-600402	Bottom Contact
8	08-600900	Interlock Shaft
9	08-600901	Interlock Shaft
10	08-602400	Lock Bar Lever
11	08-602601	Contact Lever



### Handed

☉ Yes ○ No

If part is handed, you must specify Right or Left Hand.

### Features and Notes

Label: UL and CSA

Rating: NEMA 7 & 9

Class I, Division 1 & 2, Groups C and D

Class II, Division 1 & 2, Groups E, F, and G



# Interlocks

08-699501

XHM-2 interlock

## Where Used

Power operated Freight Doors with Lock Bar and Retiring Cam in a Corrosive Location.

Also Available:

XHM-2 Interlock - with extended shaft

XHM-2 Interlock - with auto sta-set switch

## Sub Assemblies

(For additional details - see pages that follow)

Item #	Part #	Part Description
1	04-009900	Latch Lever Spring
2	04-041601	Lock Bar Guide
3	08-003600	Interlock Spring
4	08-016600	Contact Bar
5	08-600200	Contact Bar Support
6	08-600300	Contact Post - Top Assembly
7	08-600402	Bottom Contact
8	08-600900	Interlock Shaft
9	08-602400	Lock Bar Lever
10	08-602601	Contact Lever



**Handed**  
☒ Yes ☐ No      If part is handed, you must specify Right or Left Hand.

## Features and Notes

Label: UL and CSA

Rating: NEMA 2, 3, 4, 4X, 12 and 13



# Interlocks

08-699700

## XFE Lock and Contact

### Where Used

COURION Manual Freight Doors with Lock Bars, and Fixed or Stationary Cams, with Hazardous Location requirements.

### Sub Assemblies

(For additional details - see pages that follow)

Item #	Part #	Part Description
1	04-009900	Latch Lever Spring
2	08-003600	Interlock Spring
3	08-016600	Contact Bar
4	08-500102	Roller
5	08-500300	Contact Lever Spring
6	08-600100	Flat Iron Keeper
7	08-600200	Contact Bar Support
8	08-600300	Contact Post - Top Assembly
9	08-600402	Bottom Contact
10	08-600500	Lock Bar Slide
11	08-600600	Auxiliary Contact Plunger
12	08-600601	Auxiliary Contact Button
13	08-600700	Roller Pin
14	08-600800	Pin
15	08-600900	Interlock Shaft
16	08-602400	Lock Bar Lever
17	08-602501	Roller Lever
18	08-602600	Bottom Contact Lever
19	08-602700	Top Contact Lever



### Handed

☒ Yes ☐ No

If part is handed, you must specify Right or Left Hand.

### Features and Notes

Label: UL and CSA

Rating: NEMA 7 and 9  
Class I, Division 1 & 2, Groups C & D  
Class II, Division 1 & 2, Groups E, F, & G





# Interlocks

08-699701

## XFM Lock and Contact

### Where Used

COURION Manual Freight Doors with Lock Bars and Fixed or Stationary Cam in a Corrosive Location.

### Sub Assemblies

(For additional details - see pages that follow)

Item #	Part #	Part Description
1	04-009900	Latch Lever Spring
2	08-003600	Interlock Spring
3	08-016600	Contact Bar
4	08-500100	Roller
5	08-500300	Contact Lever Spring
6	08-600100	Flat Iron Keeper
7	08-600200	Contact Bar Support
8	08-600300	Contact Post - Top Assembly
9	08-600402	Bottom Contact
10	08-600500	Lock Bar Slide
11	08-600600	Auxiliary Contact Plunger
12	08-600601	Auxiliary Contact Button
13	08-600700	Roller Pin
14	08-600800	Pin
15	08-600900	Interlock Shaft
16	08-602400	Lock Bar Lever
17	08-602501	Roller Lever
18	08-602600	Bottom Contact Lever
19	08-602700	Top Contact Lever



### Handed

☉ Yes    ○ No

If part is handed, you must specify Right or Left Hand.

### Features and Notes

Label: UL and CSA

Rating: NEMA 2,3, 4, 4X, 12 and 13



# Interlocks

08-600000

Top Contact Kit - X Series

## Where Used

COURION "X" Series Interlocks

## Sub Assemblies

(For additional details - see pages that follow)

Item #	Part #	Part Description
1	08-003600	Interlock Spring
2	08-016600	Contact Bar
3	08-600200	Contact Bar Support
4	08-600300	Contact Post - Top Assembly



## Handed

☐ Yes ☒ No

If part is handed, you must specify Right or Left Hand.

## Features and Notes

Includes: (4) 8-32 x 3/8" Flat Head Screws, (2) 1/16 x 1/2" Cotter Pins, and (1) 1/8 x 1-1/4" Roll Pin.



# Interlocks

08-600010

## Bottom Contact Kit - X Series

### Where Used

COURION X Series Interlocks

### Sub Assemblies

(For additional details - see pages that follow)

Item #	Part #	Part Description
1	08-003600	Interlock Spring
2	08-016600	Contact Bar
3	08-600200	Contact Bar Support
4	08-600402	Bottom Contact



**Handed**  
☒ Yes   ☐ No   If part is handed, you must specify Right or Left Hand.

### Features and Notes

Include (4) 8-32 x 3/8" Flat Head Machine Screws, and (1) 1/8 x 1-1/4" Roll Pin

## X Series

### 08-003600

### Interlock Spring

#### Where Used

COURION "X" Series Interlocks



#### Features and Notes

Handed ☐ Yes ☒ No

### 08-016600

### Contact Bar

#### Where Used

COURION "X" Series Interlocks



#### Features and Notes

To replace Contact Bar, order the Top Contact Assembly Kit (#08-600000) or Bottom Contact Assembly Kit (#08-6000010).

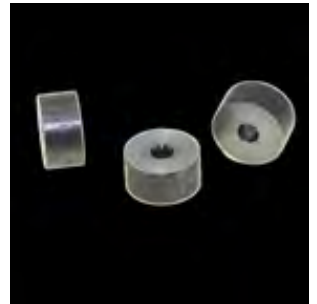
Handed ☐ Yes ☒ No

### 08-500100

### Roller

#### Where Used

COURION "X" Series Interlocks



#### Features and Notes

Available in Stainless

Include Roller Pin (#08-600700)

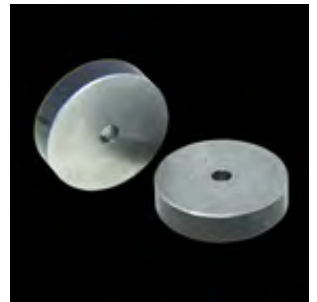
Handed ☐ Yes ☒ No

### 08-500102

### Roller

#### Where Used

COURION "X" Series Interlocks



#### Features and Notes

Available in Stainless

Handed ☐ Yes ☒ No

## X Series

### 08-500300

### Contact Lever Spring

#### Where Used

COURION "X" Series Interlocks and Car Gate Reversing Edge

#### Features and Notes

Include (2) 1/4" Flat Washers and (1) 3/32 x 1/2 Cotter Pin



Handed ☐ Yes ☒ No

### 08-600100

### Flat Iron Keeper

#### Where Used

COURION "X" Series Interlocks

#### Features and Notes

Available in Stainless



Handed ☐ Yes ☒ No

### 08-600200

### Contact Bar Support

#### Where Used

COURION "X" Series Interlocks

#### Features and Notes

Include (1) Insulator (#08-601400) and (2) #8-32 x 9/16 Flat Head Machine Screws



Handed ☐ Yes ☒ No

### 08-600201

### Pin

#### Where Used

COURION "X" Series Interlocks

#### Features and Notes

Include (1) 1/16 x 1/2 Cotter Pin



Handed ☐ Yes ☒ No

## X Series

### 08-600300

### Contact Post - Top Assembly

#### Where Used

COURION "X" Series Interlocks

#### Features and Notes

Include (1) Insulator (#08-601102, and (2) #8-32 9/16 Flat Head Machine Screws



Handed ☒ Yes ☐ No

### 08-600402

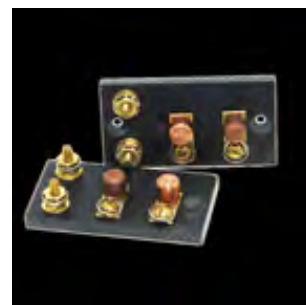
### Bottom Contact

#### Where Used

COURION "X" Series Interlocks

#### Features and Notes

Include Insulator (#08-601101) and (2) #8-32 x 9/16" Flat Head Machine Screws.



Handed ☐ Yes ☒ No

### 08-600500

### Lock Bar Slide

#### Where Used

COURION "X" Series Interlocks

#### Features and Notes

Available in Stainless

Include (1) 5/16 x 1/2 Hex Head Machine Screw and (1) 5/16 Split Lock Washer



Handed ☐ Yes ☒ No

### 08-600600

### Auxiliary Contact Plunger

#### Where Used

COURION "X" Series Interlocks

#### Features and Notes

Stainless



Handed ☐ Yes ☒ No

## X Series

### 08-600601

#### Auxiliary Contact Button

##### Where Used

COURION "X" Series Interlocks

##### Features and Notes

Stainless



Handed ☐ Yes ☒ No

### 08-600700

#### Roller Pin

##### Where Used

COURION "X" Series Interlocks

##### Features and Notes



Handed ☐ Yes ☒ No

### 08-600800

#### Pin

##### Where Used

COURION "X" Series Interlocks

##### Features and Notes



Handed ☐ Yes ☒ No

### 08-600900

#### Interlock Shaft

##### Where Used

COURION "X" Series Interlocks

##### Features and Notes

Available in Stainless

Include (2) 3/16 x 1-1/4 Roll Pins and (2) 1/8" Roll Pins



Handed ☐ Yes ☒ No

## X Series

### 08-600901

### Interlock Shaft

#### Where Used

COURION "X" Series Interlocks

#### Features and Notes

Available in Stainless

Include (2) 3/16 x 1-1/4 Roll Pins and (2) 1/8" Roll Pins



Handed ☐ Yes ☒ No

### 08-601101

### Bottom Contact Insulator

#### Where Used

COURION "X" Series Interlocks

#### Features and Notes



Handed ☐ Yes ☒ No

### 08-601102

### Top Contact Insulator

#### Where Used

COURION "X" Series Interlocks

#### Features and Notes



Handed ☐ Yes ☒ No

### 08-601400

### Insulator

#### Where Used

COURION "X" Series Interlocks

#### Features and Notes



Handed ☐ Yes ☒ No



## X Series

### 08-601500

### Spring Stop

#### Where Used

COURION "X" Series Interlocks

#### Features and Notes

Available in Stainless



Handed ☐ Yes ☒ No

### 08-602200

### Interlock Box with Cover

#### Where Used

COURION "X" Series Interlocks

#### Features and Notes

Available in Stainless



Handed ☒ Yes ☐ No

### 08-602300

### Interlock Box

#### Where Used

COURION "X" Series Interlocks

#### Features and Notes

Include (6) 1/4-20 x 1 Hex Head Machine Screws, and (6) 1/4 Split Lock Washers



Handed ☐ Yes ☒ No

### 08-602400

### Lock Bar Lever

#### Where Used

COURION "X" Series Interlocks

#### Features and Notes

Include (1) 3/16 x 1-1/4 Roll Pin



Handed ☒ Yes ☐ No

## X Series

### 08-602501

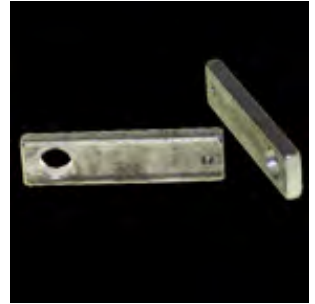
### Roller Lever

#### Where Used

COURION "X" Series Interlocks

#### Features and Notes

Available in Stainless



Handed ☐ Yes ☒ No

### 08-602502

### Roller Lever

#### Where Used

COURION "X" Series Interlocks

#### Features and Notes

Include (1) 3/16 x 1-1/4 Roll Pin



Handed ☐ Yes ☒ No

### 08-602600

### Bottom Contact Lever

#### Where Used

COURION "X" Series Interlocks

#### Features and Notes

right hand shown



Handed ☒ Yes ☐ No

### 08-602601

### Contact Lever

#### Where Used

COURION "X" Series Interlocks

#### Features and Notes

Include (1) 1/8 x 1-1/8 Roll Pin with each Contact Lever



Handed ☐ Yes ☒ No

## X Series

### 08-602700

#### Where Used

COURION "X" Series Interlocks

### Top Contact Lever



#### Features and Notes

Include (1) 1/8 x 1-1/8 Roll Pin with each Contact Lever

Handed ☒ Yes ☐ No

### 08-603201

#### Where Used

COURION "X" Series Interlocks

### Z Bracket



#### Features and Notes

Available in Stainless

Include (2) #10-32 x 3/8" Round Head Machine Screws

Handed ☐ Yes ☒ No

### 08-699411

#### Where Used

COURION "X" Series Interlocks

### Interlock Gasket



#### Features and Notes

Handed ☒ Yes ☐ No

### 08-700300

#### Where Used

COURION "X" Series Interlocks

### Spring



#### Features and Notes

Handed ☐ Yes ☒ No



# Interlocks

90-955000

## HG-1 Interlock

### Where Used

COURION Manual Freight Doors with Fixed Cam

Also Available:

HG-1 Interlock (Moisture Resistant) (Part #: 90-955100)

### Sub Assemblies

(For additional details - see pages that follow)

Item #	Part #	Part Description
--------	--------	------------------



Handed	If part is handed, you must
☉ Yes    ○ No	specify Right or Left Hand.

### Features and Notes



# Interlocks

90-955200

HG-2 Interlock

## Where Used

COURION Manual Freight Doors with Retiring Cam

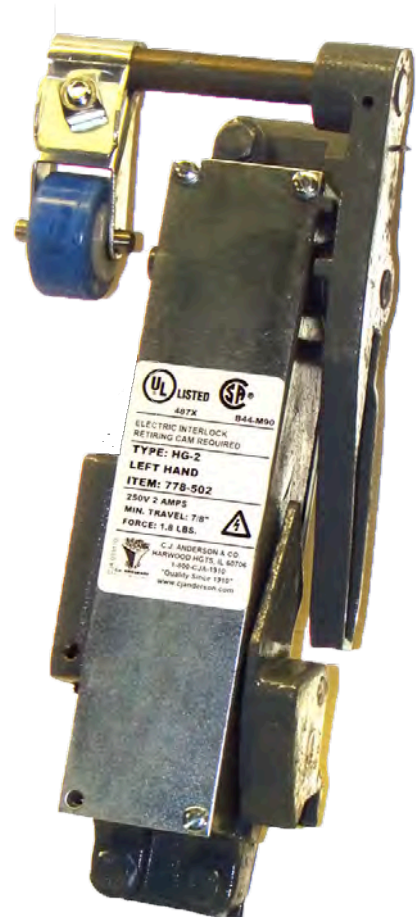
Also Available:

HG-2 Interlock (Moisture Resistant) (Part #: 90-955300)

## Sub Assemblies

(For additional details - see pages that follow)

Item #	Part #	Part Description
--------	--------	------------------



Handed

☒ Yes ☐ No

If part is handed, you must specify Right or Left Hand.

## Features and Notes

## Lock-Out Rods and Switch Cams

**08-950000**

### Lock-Out Rod

**Where Used**

COURION Manual Freight Doors with HG Interlocks



**Features and Notes**

Standard Lock-Out Rod is 71-5/8" Long

The size of your Lock-Out Rod may vary. Please call COURION with your JOB NUMBER, JOB NAME, or JOB LOCATION before ordering a replacement Lock-Out Rod.

Handed ☐ Yes ☒ No

**08-950100**

### Lock-Out Rod Guide

**Where Used**

COURION HG Interlocks



**Features and Notes**

Handed ☐ Yes ☒ No

**08-952100**

### Lock-Out Rod Holder Assembly - Regular

**Where Used**

COURION Manual Freight Doors (Regular Type) with HG Interlocks



**Features and Notes**

Include Switch Cam and Lock-Out Rod Holder Hardware Kit #94-000142.

Handed ☐ Yes ☒ No

**08-952200**

### Lock-Out Rod Holder Assembly - Regular Pass

**Where Used**

COURION Manual Freight Doors (Regular Pass Type) with HG Interlocks



**Features and Notes**

Include Switch Cam and Lock-Out Rod Holder Hardware Kit #94-000142.

Handed ☐ Yes ☒ No

## Lock-Out Rods and Switch Cams

### 08-952300

#### Lock-Out Rod Holder Assembly - Pass

##### Where Used

COURION Manual Freight Doors (Pass Type) with HG Interlocks



##### Features and Notes

Include Switch Cam and Lock-Out Rod Holder Hardware Kit #94-000142.

Handed ☐ Yes ☒ No

### 08-952400

#### Switch Cam - Regular

##### Where Used

COURION Manual Freight Doors (Regular Type) with HG Interlocks



##### Features and Notes

Include Switch Cam and Lock-Out Rod Holder Hardware Kit #94-000142.

Handed ☐ Yes ☒ No

### 08-952500

#### Switch Cam - Regular Pass

##### Where Used

COURION Manual Freight Doors (Regular Pass Type) with HG Interlocks



##### Features and Notes

Include Switch Cam and Lock-Out Rod Holder Hardware Kit #94-000142.

Handed ☐ Yes ☒ No

### 08-952600

#### Switch Cam - Pass

##### Where Used

COURION Manual Freight Doors (Pass Type) with HG Interlocks



##### Features and Notes

Include Switch Cam and Lock-Out Rod Holder Hardware Kit #94-000142.

Handed ☐ Yes ☒ No

## Lock-Out Rods and Switch Cams

**94-000142**

**Where Used**

COURION HG Style Freight Doors

### Lock-Out Rod Holder and Switch Cam Hardware Kit

LOCK-OUT ROD HOLDER & SWITCH CAM 94-000142
(5) 5/16-18 X 1" HEX HEAD CAP SCREW
(5) 5/16-18 HEX NUTS
(5) 5/16" SPLIT LOCK WASHERS
COURION (800) 533-5760 OR (314) 533-5700

**Features and Notes**

Handed ☐ Yes ☒ No





# Side Opposite Latches

**21-250000**

**Side Opposite Latch**

## Where Used

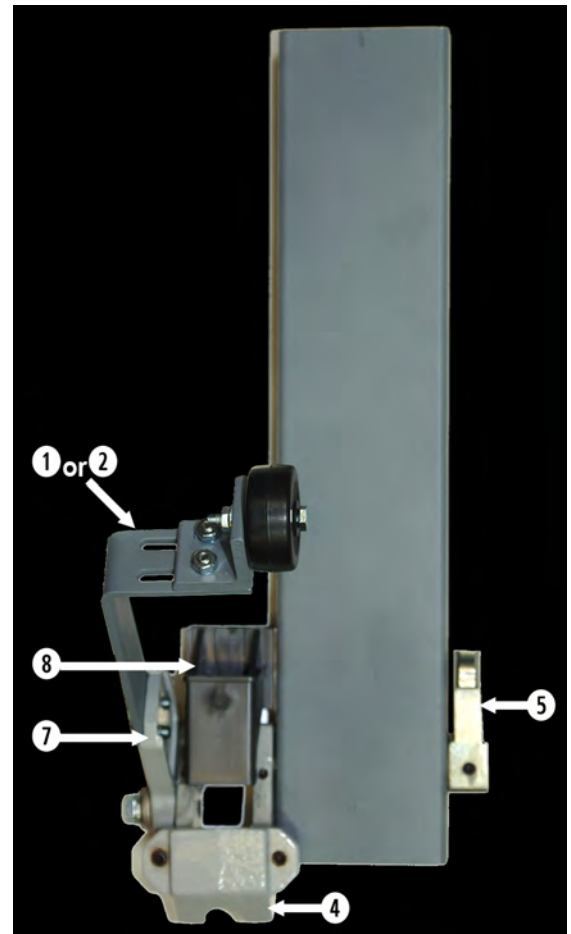
COURION "Q" Series Freight Doors that are generally wider than 10'.

Mounts directly opposite of the Q Style Interlock.

## Sub Assemblies

(For additional details - see pages that follow)

Item #	Part #	Part Description
1	04-000510	Roller Arm Assembly - Short
2	04-000520	Roller Arm Assembly - Long
3	21-242200	Redundant Spring
4	21-242500	Interlock Latch
5	21-242700	Upper Panel Lock
6	21-243000	Pivot Shaft
7	21-247500	Roller Arm Adjuster
8	21-248300	Chain Rod Guide



**Handed**  
☒ Yes ☐ No      If part is handed, you must specify Right or Left Hand.

## Features and Notes

Includes mounting hardware kit 94-000135Q.

## Q Series

### 04-000510

### Roller Arm Assembly - Short

#### Where Used

COURION "Q" Series Interlocks and Side Opposite Latches

#### Features and Notes

Must specify whether you need the "short" or "long" Roller Arm.

Not included with Q Interlocks or Side Opposite Latches - must be ordered separately.

Includes Interlock Roller Arm Hardware Kit #94-000230Q



Handed ☐ Yes ☒ No

### 04-000520

### Roller Arm Assembly - Long

#### Where Used

COURION "Q" Series Interlocks and Side Opposite Latches

#### Features and Notes

Must specify whether you need the "short" or "long" Roller Arm.

Not included with Q Interlocks - must be ordered separately.

Includes Interlock Roller Arm Hardware Kit #94-000230Q



Handed ☐ Yes ☒ No

### 21-242200

### Redundant Spring

#### Where Used

COURION "Q" Series Interlocks and Side Opposite Latches

#### Features and Notes



Handed ☐ Yes ☒ No

### 21-242500

### Interlock Latch

#### Where Used

COURION "Q" Series Interlocks and Side Opposite Latches

#### Features and Notes

Include (1) 3/16 x 1-1/4" Roll Pin, (1) 3/8-18 x 1-1/4" Hex Head Cap Screw, (1) 3/8 Split Lock Washer, and (1) Grip Washer (#21-247800)



Handed ☐ Yes ☒ No

## Q Series

### 21-242700

### Upper Panel Lock

#### Where Used

COURION "Q" Series Interlocks and Side Opposite Latches

#### Features and Notes

Include (1) 5/16 x 1/4" Socket Head Set Screw



Handed ☐ Yes ☒ No

### 21-243000

### Pivot Shaft

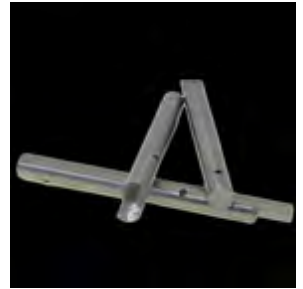
#### Where Used

COURION "Q" Series Interlocks and Side Opposite Latches

#### Features and Notes

Available in Stainless.

Include (1) 3/16 x 1" Roll Pin



Handed ☐ Yes ☒ No

### 21-247500

### Roller Arm Adjuster

#### Where Used

COURION "Q" Series Interlocks and Side Opposite Latches

#### Features and Notes

Available in Stainless



Handed ☐ Yes ☒ No

### 21-247800

### Grip Washer

#### Where Used

COURION "Q" Series Interlocks and Side Opposite Latches

#### Features and Notes

Available in Stainless



Handed ☐ Yes ☒ No

## Q Series

### 21-248300

### Chain Rod Guide

#### Where Used

COURION "Q" Series Interlocks and Side Opposite Latches

#### Features and Notes

Include (1) Guide Spacer (#21-248500), (2) 1/4 Lock Washers, and (2) 1/4-20 x 2" Socket Head Screws.



Handed ☐ Yes ☒ No

### 21-248500

### Guide Spacer

#### Where Used

COURION "Q" Series Interlocks and Side Opposite Latches

#### Features and Notes

Available in Stainless



Handed ☐ Yes ☒ No

### 94-000135Q

### Side Opposite Lock Hardware Kit

#### Where Used

COURION "Q" Series Interlocks

#### Features and Notes



Handed ☐ Yes ☒ No

## Roller Arms

### 04-000301

#### Adjustable Roller

##### Where Used

COURION "P" Series Interlock Roller Arms

##### Features and Notes



Handed ☐ Yes ☒ No

### 04-000501

#### Roller Arm

##### Where Used

COURION "P" Series Interlocks

##### Features and Notes

Adjustable

Not included with "P" Series Interlocks. Must be ordered separately.



Handed ☐ Yes ☒ No

### 04-000510

#### Roller Arm Assembly - Short

##### Where Used

COURION "Q" Series Interlocks and Side Opposite Latches

##### Features and Notes

Must specify whether you need the "short" or "long" Roller Arm.

Not included with Q Interlocks or Side Opposite Latches - must be ordered separately.



Handed ☐ Yes ☒ No

### 04-000520

#### Roller Arm Assembly - Long

##### Where Used

COURION "Q" Series Interlocks and Side Opposite Latches

##### Features and Notes

Must specify whether you need the "short" or "long" Roller Arm.

Not included with Q Interlocks - must be ordered separately.



Handed ☐ Yes ☒ No

## Roller Arms

### 04-549103

#### Where Used

Interlock Roller Arm

### Rubber Roller



#### Features and Notes

2"

Handed ☐ Yes ☒ No

### 08-003300

#### Where Used

COURION "D" and "X" Series Interlocks

### Interlock Roller Assembly Kit



#### Features and Notes

Not included with "D" or "X" Series Interlocks. Must be ordered separately.

Includes (1) Ratchet Washer (Part #: 08-032900) with each Roller Arm.

Handed ☐ Yes ☒ No

### 08-003303

#### Where Used

COURION D and X Series Interlocks

### Roller Arm - Short



#### Features and Notes

Handed ☐ Yes ☒ No

### 08-032900

#### Where Used

COURION "P" Series Interlock Roller Arms

### Ratchet Washer



#### Features and Notes

Handed ☐ Yes ☒ No

