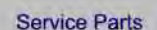
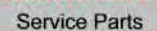
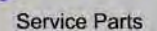
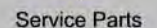
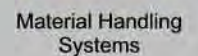
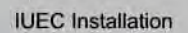
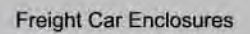
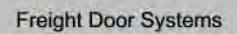


ONE COMPANY So Many Options



Freight Door Operators and Motors

Q Style Door Operator	3
P Style Door Operator	5
Manual Sheaves	8
Cross Drive Operators.....	12
Adjustable Sheaves	17
Door Motors	22



Operators and Motors

02-250001

Door Operator - with LP25 Motor

Where Used

COURION "Q" Series Power Operated Freight Doors with dual operators.

Dual motors available on jobs with large hoistway doors.

Features and Notes

Operator contains oversized, fully sealed ball bearings for exceptional life.

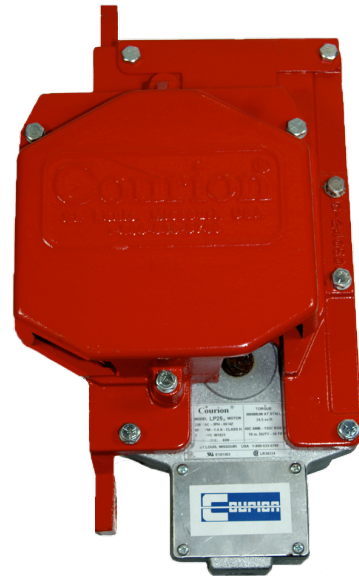
Motor has totally enclosed, non-ventilated cast aluminum housing with built-in junction box with conduit fitting.

Duty: Average torque = 28.0 oz. ft. Minimum torque at stall = 24.5 oz

Sub Assemblies

(For additional details - see pages that follow)

Item #	Part #	Part Description
1	02-250000	Door Operator - without motor
2	02-252001	Door Operator Sheave Gear Assembly
3	90-854000	Motor - 25 oz.



Handed
☒ Yes ☐ No

If part is handed, you must specify Right or Left Hand.



Operators and Motors

02-250000

Door Operator - without motor

Includes: Operator housing, shaft, sheave, dust shield, and ball bearings.

Motor not included. If you want complete Door Operator - please see 02-250001 Q Style Operator.



Handed ☒ Yes ☐ No

02-252001

Door Operator Sheave Gear Assembly

Includes one (1) Door Operator Shaft (#02-251500), one (1) Door Operator Sheave Gear (#02-252000), and two (2) Ball Bearings (#90-805300).



Handed ☐ Yes ☒ No

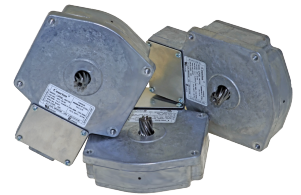
90-854000

Motor - 25 oz.

600 RPM, 230VAC, 3 PH, 60 hz., 1.4 amps - Class H, 3-Phase

Labeling: CSA and RU (registered UL component)

Please provide information from motor name plate when ordering.



Handed ☐ Yes ☒ No



Operators and Motors

02-198602

Door Operator - with 16 oz. Motor

Where Used

COURION "P" Series power operated freight doors with dual operators.

Also see Door Operator - with 32 oz. Motor (Part #02-198603).

Features and Notes

Please provide the COURION JOB NUMBER, JOB NAME, or JOB LOCATION when ordering.

Explosion Resistant Door Operators available.

Includes Mounting Hardware Kit #94-000030.



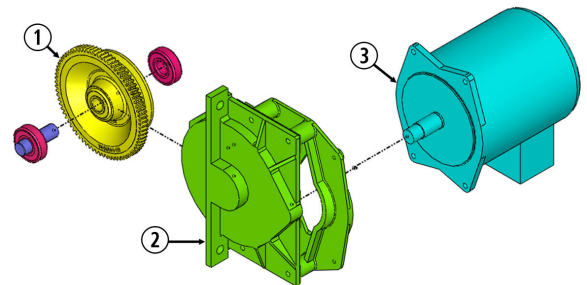
Sub Assemblies

(For additional details - see pages that follow)

Item #	Part #	Part Description
1	02-100309	Sheave Gear Assembly
2	02-198601	Door Operator - without motor
3	90-852600	Motor - 16 oz.

Handed
☒ Yes ☐ No

If part is handed, you must specify Right or Left Hand.





Operators and Motors

02-198603

Door Operator - with 32 oz. Motor

Where Used

COURION "P" Series power operated freight doors with dual operators.

See also Door Operator - with 16 oz. Motor (Part #02-198602)

Features and Notes

Please provide COURION JOB NUMBER, JOB NAME, or JOB LOCATION when ordering.

Explosion Resistant Door Operators available.

Includes Mounting Hardware Kit #94-000030.

Sub Assemblies

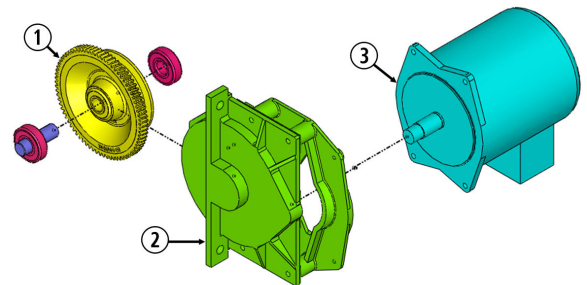
(For additional details - see pages that follow)

Item #	Part #	Part Description
1	02-100309	Sheave Gear Assembly
2	02-198601	Door Operator - without motor
3	90-852800	Motor - 32oz



Handed
☒ Yes ☐ No

If part is handed, you must specify Right or Left Hand.



Operators and Motors

02-100309

Sheave Gear Assembly

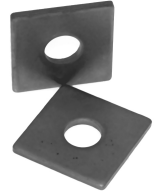
Includes one (1) Sheave Gear (#02-100307), two (2) Ball Bearings (#90-805300), and one (1) Operator Shaft (#02-100103).



Handed ☐ Yes ☒ No

02-101800

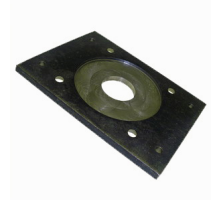
Operator Filler Pad



Handed ☐ Yes ☒ No

02-102000

Motor Adapter Plate



Handed ☐ Yes ☒ No

02-102100

Door Operator Motor Pinion

Used on Door Operators with Explosion Resistant Motors (#90-853700).

Made out of 4150 heat-treated steel for extra hardness and durability.

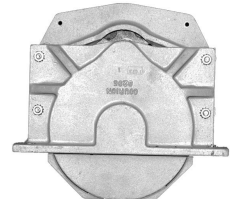


Handed ☐ Yes ☒ No

02-198601

Door Operator - without motor

Includes, Sheave Gear Assembly (#02-100309) and Operator Housing Assembly. Motor must be purchased separately.



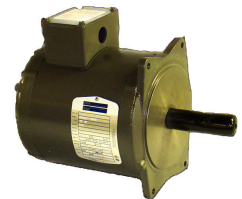
Handed ☐ Yes ☒ No

90-852600

Motor - 16 oz.

600 RPM, 220V, 0.9 amps, 3-Phase

Please provide information from motor name plate when ordering.



Handed ☐ Yes ☒ No

Manual Sheaves

02-260000

Sheave Assembly - Q Style

Where Used

COURION "Q" Series manually operated freight doors with dual sheaves.

Features and Notes

Includes necessary mounting hardware.



Handed ☐ Yes ☒ No

03-399700

Sheave Assembly - 5"

Where Used

COURION "H" and "D" Series manually operated freight doors with dual sheaves.

Features and Notes

5" Sheave



Handed ☐ Yes ☒ No

03-399702

Sheave Assembly - 5"

Where Used

COURION "H", "D" and "P" Series manual freight doors with dual sheaves.

Used when it is probable that the freight doors will be converted to power operation sometime in the future.

Features and Notes

5" Sheave

Includes necessary mounting hardware.



Handed ☐ Yes ☒ No

03-499600

Sheave Assembly - 6"

Where Used

COURION "X" Series manually operated freight doors with dual sheaves.

Features and Notes

6" Sheave



Handed ☐ Yes ☒ No

Manual Sheaves

03-499700

Sheave Assembly - 7-1/4"

Where Used

COURION "X" Series manually operated freight doors with dual sheaves.



Features and Notes

7-1/4" Sheave

Handed ☐ Yes ☒ No

Manual Sheaves

03-304000

Where Used

COURION Door Idler Sheaves

Sheave - 4"



Features and Notes

Available in Brass

Handed ☐ Yes ☒ No

03-305000

Where Used

COURION 'P' Series Manual Sheave, and Car Gate Idler Sheave

Sheave - 5"



Features and Notes

5" Sheave

Handed ☐ Yes ☒ No

03-405400

Where Used

COURION "X" Series Manual Sheaves

Sheave - 6"



Features and Notes

6" Sheave

Handed ☐ Yes ☒ No

07-228303

Where Used

COURION "X" Series Manual Door Sheaves and "P" Series Car Gate Operators.

Sheave - 7-1/4"



Features and Notes

Available in bronze.

Include (4) External Retaining Rings (#90-868500), and (1) 3/16 x 1-1/4 Square Key

Handed ☐ Yes ☒ No

Manual Sheaves

07-228304

Sheave Rubber Band

Where Used

COURION "X" Series Manual Door Sheaves and "P" Series Car Gate Operators.



Features and Notes

Handed ☐ Yes ☒ No

90-805700

Ball Bearing

Where Used

COURION "P" Series manual sheaves, and "Q" Series Car Gate Operator



Features and Notes

Handed ☐ Yes ☒ No

94-000031

Manual Sheave Hardware Kit

Where Used

COURION P and Q Style Manual Sheaves

Manual Sheave Hardware Kit Courion Part #: 94-000031
(2) 1/2"-13 x 1-1/2" Hex Head Machine Screws (2) 1/2"-13 Hex Nut (2) 1/2" Split Lock Washer (LW)
COURION 1-800-533-5760 OR 314-533-5700

Features and Notes

Handed ☐ Yes ☒ No



Door Equipment

02-198700

Cross Drive Operator - without Motor

Where Used

COURION Cross Drive Power Freight Doors.

Cross Drive Operators are job specific.

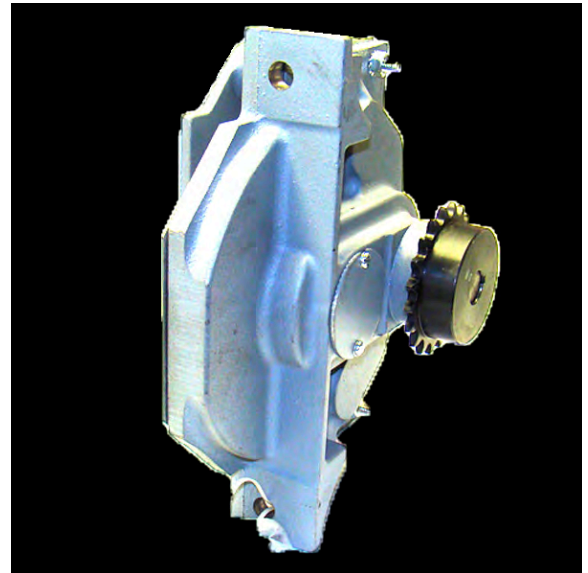
Motor must be purchased separately.

Please provide COURION JOB NUMBER, JOB NAME, or JOB LOCATION when ordering.

Sub Assemblies

(For additional details - see pages that follow)

Item #	Part #	Part Description
1	02-100305	Cross Drive Gear Assembly
2	02-100502	Cross Drive Gear Assembly
3	02-400301	Sprocket
4	02-400700	Hub Cover
5	90-000102	Sprocket
6	90-805300	Ball Bearing



Handed
☒ Yes ☐ No If part is handed, you must specify Right or Left Hand.

Features and Notes

Includes Door Operator Hardware Kit #94-000030.

Cross Drives

02-100304

Where Used

COURION Cross Drive Operators.

Cross Drive Gear Assembly



Features and Notes

Handed ☐ Yes ☒ No

02-100305

Where Used

COURION Cross Drive Operators.

Cross Drive Gear Assembly



Features and Notes

Includes Sheave Gear, Shaft, and Cross Drive Gear.

Handed ☐ Yes ☒ No

02-100306

Where Used

Obsolete. COURION Cross Drive Operators.

Cross Drive Gear Assembly (Obsolete)



Features and Notes

Handed ☐ Yes ☒ No

02-100404

Where Used

COURION Cross Drive Operators.

Cross Drive Gear Assembly



Features and Notes

Handed ☐ Yes ☒ No

Cross Drives

02-100502

Where Used

COURION Cross Drive Operators.

Cross Drive Gear Assembly



Features and Notes

Includes Gear and Shaft

Handed ☐ Yes ☒ No

02-100503

Where Used

COURION Cross Drive Operators.

Cross Drive Gear Assembly



Features and Notes

Handed ☐ Yes ☒ No

02-100702

Where Used

COURION Cross Drive Operators.

Ball Bearing Spacer



Features and Notes

Handed ☐ Yes ☒ No

02-100703

Where Used

COURION Cross Drive Operators.

Ball Bearing Spacer



Features and Notes

Handed ☐ Yes ☒ No

Cross Drives

02-101700

Where Used

COURION Cross Drive Operators.

Ball Bearing Spacer



Features and Notes

Handed ☐ Yes ☒ No

02-400301

Where Used

COURION Cross Drive Operators.

Sprocket



Features and Notes

Handed ☐ Yes ☒ No

02-400700

Where Used

COURION Cross Drive Operators.

Hub Cover



Features and Notes

Handed ☐ Yes ☒ No

90-000100

Where Used

COURION Cross Drive Operators and Adjustable Sheaves

Sprocket



Features and Notes

Available in stainless.

Handed ☐ Yes ☒ No

Cross Drives

90-000102

Where Used

COURION Cross Drive Operators.

Sprocket



Features and Notes

Handed ☐ Yes ☒ No

90-804700

Where Used

COURION Cross Drive Operators and Adjustable Sheaves

Ball Bearing



Features and Notes

Handed ☐ Yes ☒ No

Adjustable Sheaves

03-299500

Adjustable Sheave Assembly

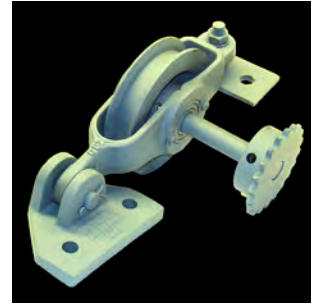
Where Used

COURION Cross Drive Power Freight Door Operators.

Cross Drive Adjustable Sheaves are job specific.

Please provide COURION JOB NUMBER, JOB NAME, or JOB LOCATION when ordering.

Features and Notes



Handed ☒ Yes ☐ No

03-299600

Adjustable Sheave Assembly

Where Used

COURION Cross Drive Power Freight Door Operators.

Cross Drive Adjustable Sheaves are job specific.

Please provide COURION JOB NUMBER, JOB NAME, or JOB LOCATION when ordering.

Features and Notes



Handed ☒ Yes ☐ No

03-299700

Adjustable Sheave Assembly

Where Used

COURION Cross Drive Power Freight Door Operators.

Cross Drive Adjustable Sheaves are job specific.

Please provide COURION JOB NUMBER, JOB NAME, or JOB LOCATION when ordering.

Features and Notes



Handed ☒ Yes ☐ No

03-299800

Adjustable Sheave Assembly

Where Used

COURION Cross Drive Power Freight Door Operators.

Cross Drive Adjustable Sheaves are job specific.

Please provide COURION JOB NUMBER, JOB NAME, or JOB LOCATION when ordering.

Features and Notes



Handed ☒ Yes ☐ No

Adjustable Sheaves

03-299900

Adjustable Sheave Assembly

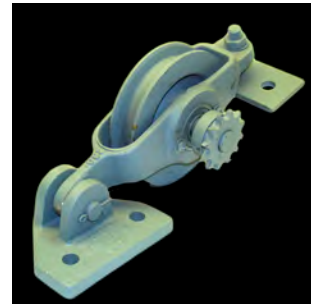
Where Used

COURION Cross Drive Power Freight Door Operators.

Cross Drive Adjustable Sheaves are job specific.

Please provide COURION JOB NUMBER, JOB NAME, or JOB LOCATION when ordering.

Features and Notes



Handed ☒ Yes ☐ No

Adjustable Sheaves

02-400300

Where Used

COURION Adjustable Sheaves

Sprocket



Features and Notes

41B12 Sprocket with 3/4" bore

Handed ☐ Yes ☒ No

03-200100

Where Used

COURION Adjustable Sheaves

Shaft



Features and Notes

Handed ☐ Yes ☒ No

03-200300

Where Used

COURION Adjustable Sheaves

Shaft



Features and Notes

Handed ☐ Yes ☒ No

03-200500

Where Used

COURION Adjustable Sheaves

Shaft



Features and Notes

Handed ☐ Yes ☒ No

Adjustable Sheaves

03-200800

Where Used

COURION Adjustable Sheaves

Sheave Adjustment



Features and Notes

Handed ☐ Yes ☒ No

03-200900

Where Used

COURION Adjustable Sheaves

Pivot Pin



Features and Notes

Handed ☐ Yes ☒ No

03-201000

Where Used

COURION Adjustable Sheaves

Sheave Mounting Plate

Features and Notes

Handed ☐ Yes ☒ No

03-226000

Where Used

COURION Adjustable Sheaves

Adjustable Sheave Housing



Features and Notes

Handed ☐ Yes ☒ No

Adjustable Sheaves

03-226100

Where Used

COURION Adjustable Sheaves

Hinge Bracket



Features and Notes

Handed ☐ Yes ☒ No

03-231000

Where Used

COURION Adjustable Sheaves

Adjustable Sheave



Features and Notes

Handed ☐ Yes ☒ No

Motors

90-852600

Motor - 16 oz.

Where Used

COURION P Style Door Operators and Cross Drive Operators

Features and Notes

600 RPM, 220V, 0.9 amps, 3-Phase

Please provide information from motor name plate when ordering.



Handed ☐ Yes ☒ No

90-852800

Motor - 32oz

Where Used

COURION P Style Door Operators and Cross Drive Operators

Features and Notes

600 RPM, 32 oz. - 220v - 1.8 amps, 3-Phase

Please provide information from motor name plate when ordering.



Handed ☐ Yes ☒ No

90-853100

Motor - 65 oz.

Where Used

COURION P Style Door Operators and P and Q Style Car Gates

Features and Notes

600 RPM, 65 oz. - 220v 3.2 amps, 3-Phase

Please provide information from motor name plate when ordering.



Handed ☐ Yes ☒ No

90-853700

Motor - 32 oz (Explosion Resistant)

Where Used

COURION P Series power operated freight doors.

Motor Pinion required when used for freight door operator (Part #: 02-102100)

Features and Notes

600 RPM, 32 oz. - 230v 1.6 amps, 3-Phase

EXPLOSION Resistant(Class I, Div 1 & 2, Group D)(Class II, Div 1 & 2, Group F & G)



Handed ☐ Yes ☒ No

Motors

90-854000

Where Used

COURION Q Style Operators

Motor - 25 oz.



Features and Notes

600 RPM, 230VAC, 3 PH, 60 hz., 1.4 amps - Class H, 3-Phase

Labeling: CSA and RU (registered UL component)

Handed ☐ Yes ☒ No

90-958500

Where Used

COURION X Series power operated freight doors.

Motor - 16 oz (Explosion Resistant)



Features and Notes

600 RPM, 16 oz, 220v 0.8 amps, 3-Phase

Explosion Resistant (Class I, Div 1 & 2, Group D)(Class II, Div 1 & 2, Group F & G)

Handed ☐ Yes ☒ No

